



# Welding Reels

**Arc Welding • Gas Welding • Cutting Operations**

**Note to the designers & engineers.**

**Welding Reels for Heavy Industry**

**Hose & Reel Products** hose reels for welding (Oxygen-acetylene or propane) are particularly recommended to obtain a functional working environment in compliance with modern safety regulations. Since the hoses are no longer untidily scattered on the floor, the risk of injuries or any accidental damage to the hoses is considerably reduced. The "LOCK SYSTEM" device allows you to use only the hose necessary for the task, while the return manual, spring or power rewinds it automatically at the end of the work without waste of time.

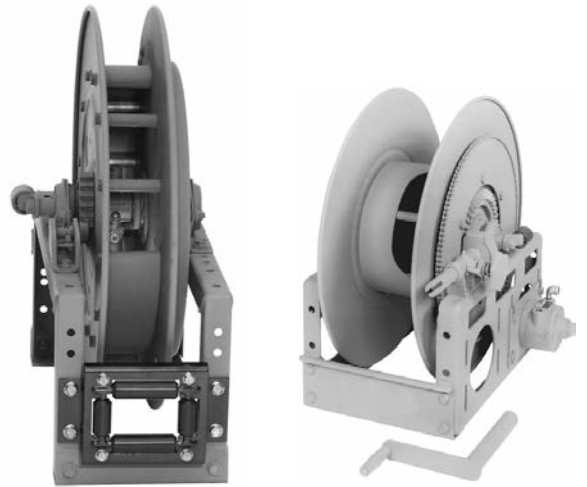
**Contents**

Reel Type	I.D. Hose Sizes	Page
<b>Arc Welding Reels Power or Manual Rewind</b>		
HRP1960	#2 - 4/0 cable to 400 amps.	3
<b>Dual Arc Welding Reels Manual Rewind</b>		
HRP1970	#1 - 4/0 cable to 400 amps.	4
<b>Gas Welding Reels Spring Rewind</b>		
HRP1080	1/4" - 3/8"	5
<b>Gas Welding Reels Manual (MX) or Power Rewind</b>		
HRP1330	1/4" - 3/8"	6

## Arc Welding Reels Power or Manual Rewind

- 400 amp rated rotary electrical device.
- Instant use with any cable length unwound.
- For use with single conductor electrode cable or grounding lead.
- Quick connection to your welder.
- Gear driven crank rewind, chain & sprocket powered by an electric, hydraulic or compressed air motor or spring rewind.
- Auxiliary rewind and Pinion brake standard on Series HRP1960 reels.
- Non sparking ratchet assembly.
- Declutching arbor is provided to prevent damage from reverse winding.
- 4-way roller assembly. Roller position must be specified.
- A cable stop should be used on Series HRP1960.

## HRP1960

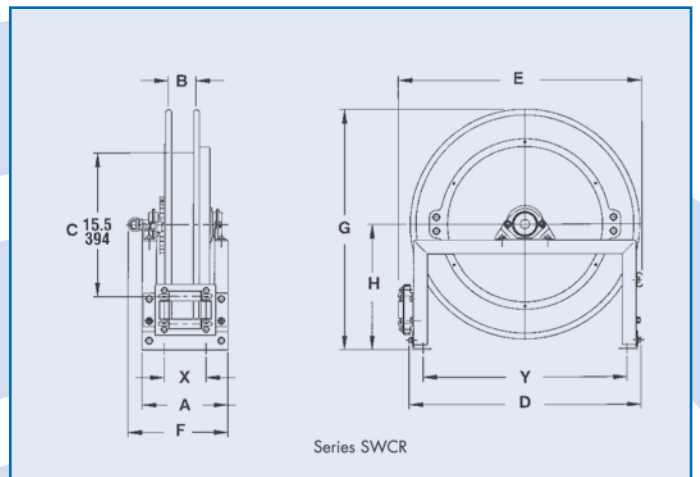


Standard Configuration Shown

Standard Configuration Shown

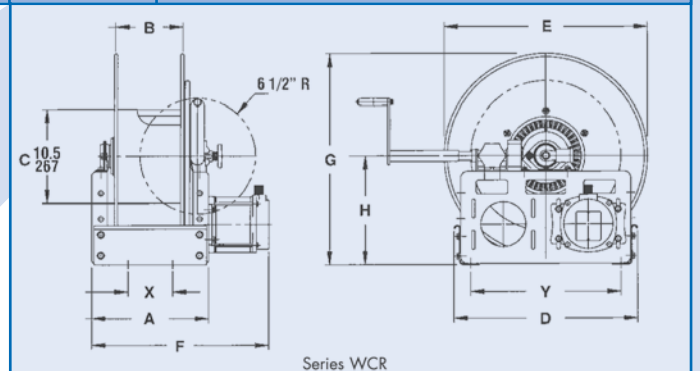
### Notes:

1. Specifications subject to change.
2. Upon request, reels can be supplied with drum lengths other than shown and with disc sizes in other diameters.
3. When ordering power rewind Series WCR, prefix model number with:  
A = Air Rewind  
EP = Electric Rewind (12v -24v DC, **explosion proof**)  
HD = Hydraulic Rewind
4. Accessory seperated.



### HRP1960 - Welding Reels to handle #2 through 4/0 cable to 400 amps.

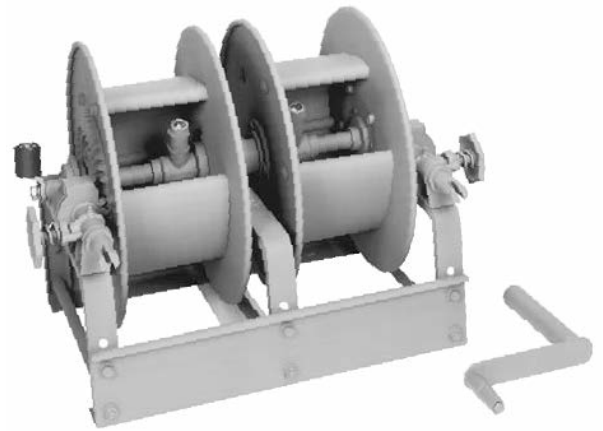
Model Number	Cable Capacity of Reel (m)							Approx. Weight (kg) NET	Reel Dimensions (mm)									
	#2 O.D. (in)	#1 .50	1/0 .58	2/0 .62	3/0 .67	4/0 .72	.81		A	B	D	E	F	F	F	G	H	X
HRP1960	26	26	18	18	18	12	39	235	76	591	619	-	-	279	607	318	114	514
HRP1961	-	84	61	61	46	46	32	330	191	521	556	381	502	-	546	308	197	425



## Dual Arc Welding Reels Manual Rewind

- Designed to handle grounding and arc welding leads on the same reel unit.
- Two spools to hold separate lengths of welding cable.
- 400 amp rotary electrical device for instant and constant use.
- Long-wearing Delrin bearings provide electrical insulation and lube-free ease of operation.
- Gear driven crank rewind with a removable handle.
- Pinion brake is standard.

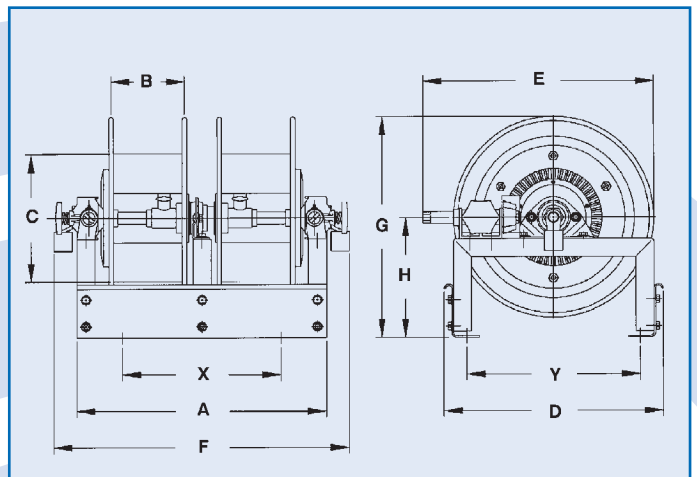
## HRP1970



Standard Configuration Shown

### Notes:

1. Specifications subject to change.
2. Accessory seperated.



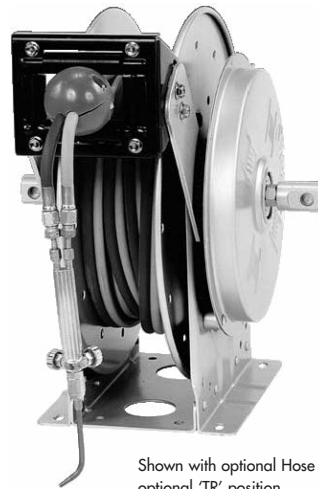
### HRP1970 - Welding Reels to handle #1 through 4/0 cable to 400 amps.

Model Number	Cable Capacity of Reel (m)					Approx. Weight (kg) NET	Reel Dimensions (mm)									
	#1 O.D. (in)	1/0 .58	2/0 .62	3/0 .67	4/0 .72		A	B	C	D	E	F	G	H	X	Y
HRP1970	38	30	30	24	15	36	521	152	267	457	527	635	460	251	330	362
HRP1971	-	46	46	30	24	38	521	152	267	470	533	635	502	264	330	375

## Gas Welding Reels Spring Rewind

- Heavy-duty spring motor.
- Non sparking ratchet assembly.
- Declutching arbor to prevent damage from reverse winding.
- Standard inlets 90° ball bearing swivel joints 1/2" female BSPT threads.
- Standard outlets male 9/16"-18 threads right hand for oxygen, left hand for gas.
- Pressures up to 21 bar.
- Temperatures from -40°C to +93°C.
- **Type of gas used MUST be specified.**
- 4-way roller assembly. Roller position must be specified.
- Hose stop is required.

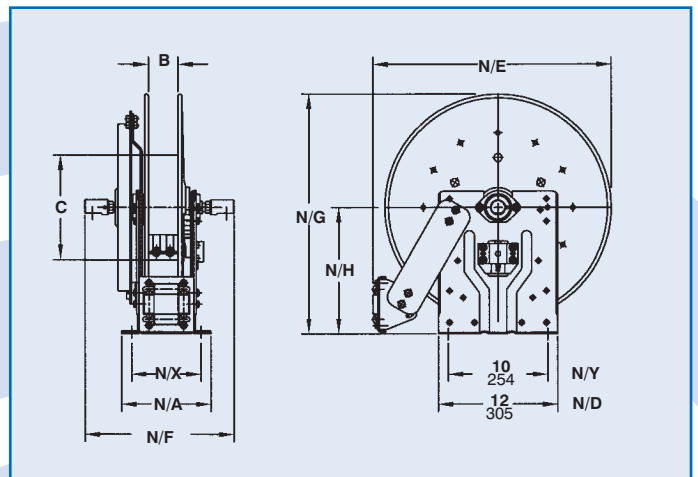
## HRP1080



Shown with optional Hose and Hose stop in the optional 'TR' position

### Notes:

1. Specifications subject to change.
2. Reel models and capacities shown are for standard drag applications; for vertical lift applications consult factory.
3. Other sizes, from standard components, available on request.
4. Accessory seperated.



### HRP1080 - Welding Reels to handle twin 1/4" through 3/8" welding hose

Model Number	Hose Capacity of Reel(m)		Approx. Weight (kg) NET	Reel Dimensions (mm)							
	I.D. (in)	3/8"		N/A	B	C	N/E	N/F	N/G	N/H	N/X
HRP1080	1/4"	2/23	43	254	102	267	603	368	610	320	203
HRP1081	1/4"	2/30	43	279	127	267	603	394	610	320	229

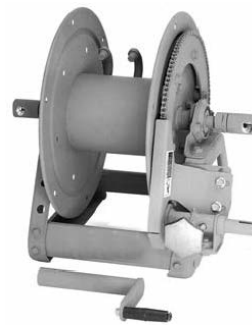
## Gas Welding Reels Manual (MX) or Power Rewind

- MX chain drive crank rewind or powered by a compressed air or hydraulic motor.
- MX rewind reels supplied with a Pinion brake.
- Power reels not supplied with a brake.
- Standard inlets 90° ball bearing swivel joints with 1/2" female BSPT threads.
- Standard outlets are male 9/16"-18 threads. Right hand for oxygen, left hand for gas.
- Rollers may be purchased. Specify roller position (mounting brackets are necessary).
- Pressures up to 21 bar.
- Temperatures from -40°C to +93°C.
- Type of gas used MUST be specified.

## HRP 1330



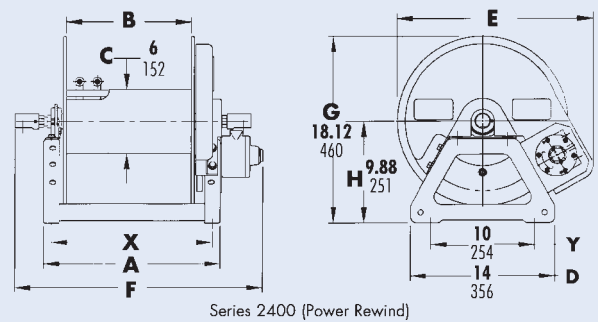
Shown with  
Air Rewind



Standard Configuration  
Shown with MX Rewind

### Notes:

1. Specifications subject to change.
2. Upon request, reels can be supplied with drum lengths other than shown and with disc sizes in other diameters.
3. Dimension "F" is the overall length of standard model reels. On crank rewind models, the dimension shown is with the crank in rewind position.  
Reels require 2" clearance to remove crank handle.
4. When ordering power rewind models replace MX prefix with:  
A = Air Rewind  
HD = Hydraulic Rewind
5. Accessory seperated.



### HRP1330 - Welding Reels to handle twin 1/4" through 3/8" welding hose

Model Number <i>For Power Rewind see note 5</i>	Hose Capacity of Reel(m)		Approx. Weight Crank Rewind (kg) NET	Reel Dimensions (mm)						
	I.D. (in)	3/8"		A	B	MX E	Power E	MX F	Power F	X
HRP1330	1/4"	2/23	14	279	152	470	483	724	476	241
HRP1331	1/4"	2/30	15	330	203	470	483	775	527	292
HRP1332	-	2/61	16	584	457	470	483	1029	781	546

