



Stainless Steel Reels for Heavy Industry

**Washdown • Chemical Transfer • Potable Water • Food Processing
Farmaceuticals & Cosmetics • Fueling • Fire Protection • Dairy Operations
Bottling Plants**

Note to the designers & engineers.

Stainless Steel Reels

For Sanitary or harsh environments, Hose & Reel Products stainless steel reels are the reels of choice. These reels are invaluable in the food and beverage, dairy, pharmaceutical and cosmetics industries due to their resistance to rust and corrosion and the absence of paint to the chip. They also have numerous uses in marine and offshore settings. Applications for these reels include washdown, chemical transfer, potable water, food ingredient transfer, fueling and fire protection.

At your request, almost any of our standard hose or cable models can be constructed in stainless steel.

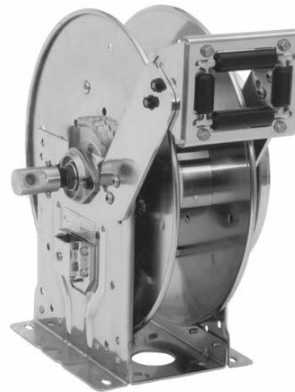
Contents

Reel Type	I.D. Hose Sizes	Page
Spring Rewind Reels		
HRP1120	1/4" - 1/2"	3
HRP1130	3/4" - 1"	4
HRP1190	3/4" - 1"	5
Compact Manual Rewind Reels		
HRP1400	1/4" - 3/8"	6
Manual Rewind Reels		
HRP1410	1/4" - 5/8"	7
HRP1420	5/8" - 3/4"	8
HRP1430	3/4" - 1"	9
HRP1440	3/4" - 1"	10

Spring Rewind Reels

For Lubrication, Potable water, Chemical Transfer, Washdown, Corrosive Environments

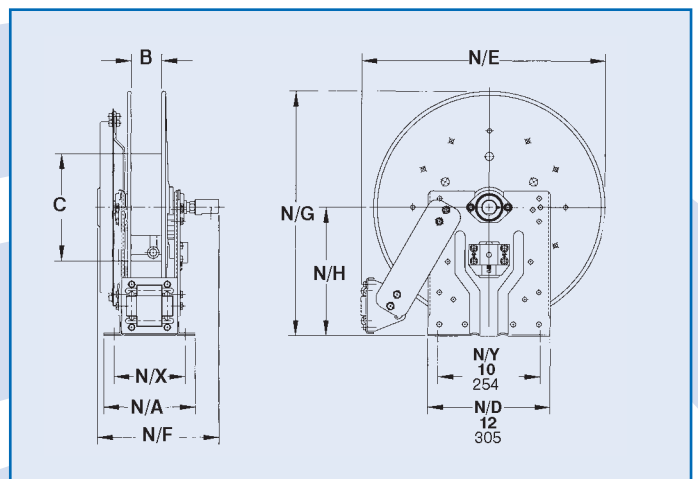
HRP1120



- Standard HRP1120 Series has a narrow frame and compact mounting base.
- Non sparking ratchet assembly.
- Declutching arbor to prevent damage from reverse winding.
- Standard inlet 90° ball bearing swivel joint 1/2" female BSPT threads.
- Standard outlet 1/2" female BSPT threads.
- Standard Pressures 207 bar, available up to 690 bar.
- Temperatures from -7°C to +204°C.
- 4-way roller assembly.
- Consult Hose & Reel Products for other pressures & temps.

Notes:

1. Specifications subject to change.
2. Reel models and capacities shown are for standard drag applications; for vertical lift applications consult factory.
3. Other sizes, from standard components, available on request.
4. Accessory seperated.



HRP1120 - Stainless Steel to handle 1/4" through 1/2" I.D. hose

Model Number	Hose Capacity of Reel(m)			Approx. Weight (kg) NET	Reel Dimensions (mm)								
	I.D. (in)	1/4"	3/8"		1/2"	A	B	C	E	F	G	H	X
HRP1120		-	15	15	29	254	102	267	527	286	508	270	203
HRP1121		30	23	20	43	254	102	394	603	286	610	321	203
HRP1122		-	30	30	44	305	152	394	641	337	660	346	254

Stainless Steel to handle 1/4" through 1/2" I.D. hose

Spring Rewind Reels

For Dairy, Caustic Materials, Air/Water, Chemical/Food Transfer

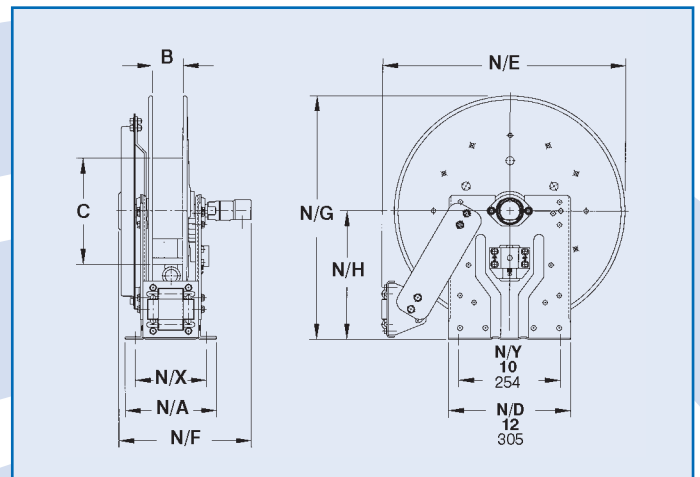
- Standard HRP1130 series has a narrow frame and compact mounting base.
- Non sparking ratchet assembly.
- Declutching arbor to prevent damage from reverse winding.
- Standard inlet 90° ball bearing swivel joint 1" female BSPT threads.
- Standard outlet 1" female BSPT threads.
- Pressures up to 69 bar.
- Temperatures from -7° C to +204° C.
- 4-way roller assembly

HRP1130



Notes:

1. Specifications subject to change.
2. Reel models and capacities shown are for standard drag applications; for vertical lift applications consult factory.
3. Other sizes, from standard components, available on request.
4. Accessory seperated.



HRP1130 - Stainless Steel to handle 3/4" or 1" I.D. hose

Model Number	Hose Capacity of Reel(m)			Approx. Weight (kg) NET	Reel Dimensions (mm)							
	I.D. (in)	3/4"	1"		A	B	C	E	F	G	H	X
HRP1130	O.D. (in)	1-9/32"	1-9/16"	39	305	152	267	603	381	610	321	254
HRP1131		21	15	46	305	152	267	641	406	660	346	254

Stainless Steel to handle 3/4" or 1" I.D. hose

Spring Rewind Reels
*For Dairy, Caustic Materials, Air/Water,
Chemical/Food Transfer*

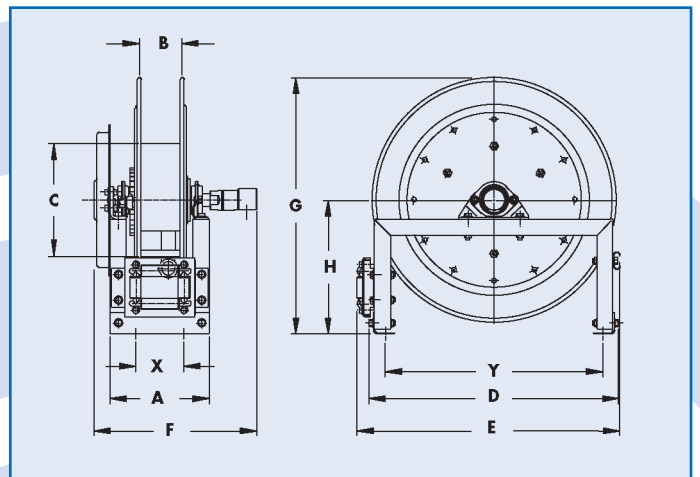
- Square tubing frame for heavy-duty applications.
- Non sparking ratchet assembly.
- Decutching arbor to prevent damage from reverse winding.
- Standard inlet 90° ball bearing swivel joint 1" female BSPT threads.
- Standard outlet 1" female BSPT threads.
- Pressures up to 69 bar.
- Temperatures from -7°C to +204°C.
- 4-way roller assembly.

HRP 1190



Notes:

1. Specifications subject to change.
2. Reel models and capacities shown are for standard drag applications; for vertical lift applications consult factory.
3. Other sizes, from standard components, available on request.
4. Accessory seperated.



HRP1190 - Stainless Steel to handle 3/4" or 1" I.D. hose

Model Number	Hose Capacity of Reel(m)		Approx. Weight (kg) NET	Reel Dimensions (mm)											
	I.D. (in)	O.D. (in)		3/4"	1"	A	B	C	D	E	F	G	H	X	Y
HRP1190			18	11	44	235	102	267	635	663	343	657	343	114	559
HRP1191			21	15	46	286	152	267	635	663	394	657	343	165	559
HRP1192			26	23	59	337	203	267	635	686	464	657	343	216	559
HRP1193			-	30	62	337	203	267	724	775	464	797	432	216	648
HRP1194			30	-	66	337	203	394	724	775	464	797	432	216	648

Stainless Steel to handle 3/4" or 1" I.D. hose

Compact Manual Rewind Reels
*For Pressure Washing, Spray Operations,
Steam Cleaning Washdown, Air, Mobile &
Permanent Installations*

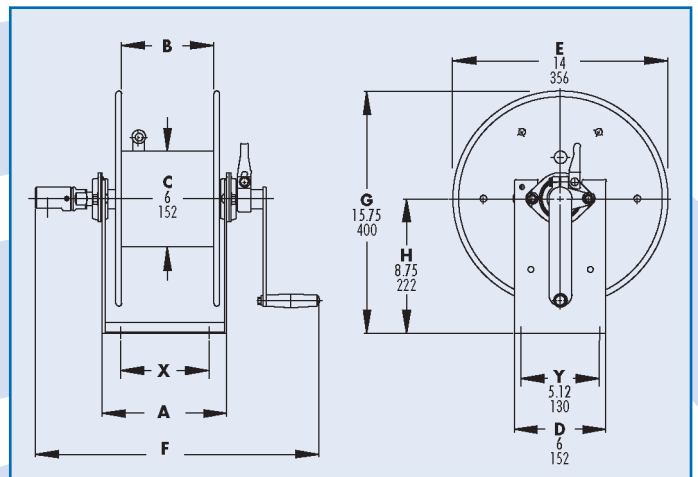
HRP1400



- Lightweight
- Compact
- Direct crank rewind permanently attached.
- Adjustable cam-lock brake standard.
- Optional pin lock available.
- Standard inlet 90° ball bearing swivel joint 1/2" female BSPT threads.
- Standard outlet 3/8" female BSPT threads.
- Pressures up to 207 bar.
- Temperatures from -7°C to +204°C.

Notes:

1. Specifications subject to change.
2. Reel models and capacities shown are for standard drag applications; for vertical lift applications consult factory.
3. Other sizes, from standard components, available on request.
4. Accessory separated.



HRP1400 - Stainless Steel to handle single 1/4" or 3/8" I.D. hose

Model Number	Hose Capacity of Reel(m)		Approx. Weight Crank Rewind (kg) NET	Reel Dimensions (mm)			
	I.D. (in)	3/8"		A	B	F	X
HRP1400	1/4"	23	10	206	152	483	102
HRP1401	3/8"	31	11	257	203	533	152
HRP1402	5/8"	53	11	359	305	635	254

Stainless Steel to handle single 1/4" or 3/8" I.D. hose

Manual Rewind Reels

For Pest Control, Steam Cleaning, Pressure Washing

- Lightweight compact reels designed for long lengths of hose.
- Direct crank rewind is permanently attached.
- Cam-lock drag brake, spring actuated pin lock.
- Standard inlet 90° ball bearing swivel joint 1/2" female BSPT threads.
- Standard outlet 1/2" female BSPT threads.
- Rollers and roller mounting brackets are accessory items.
Specify roller position.
- Pressures up to 207 bar.
- Temperatures from -7°C to +204°C.

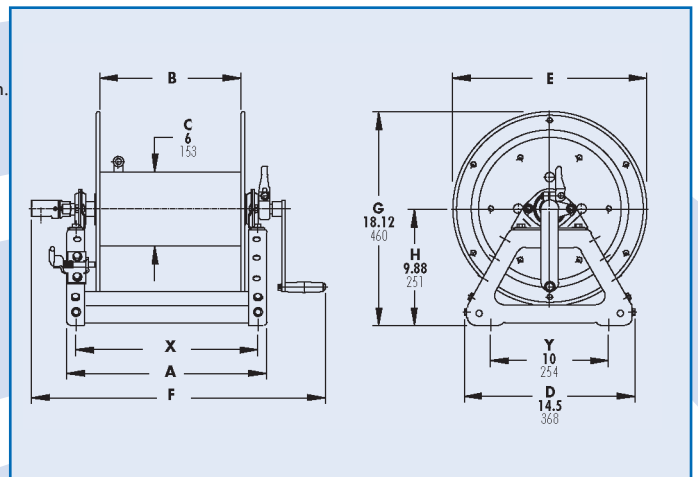
HRP1410



Notes:

1. Specifications subject to change.
2. Upon request, reels can be supplied with drum lengths other than shown.
3. Dimension "F" is the overall length of standard model reels.
4. Manual rewind available in RT or LB configurations only.
5. Accessory seperated.

6. Electro rewind (seperate) 12-24v DC.



HRP1410 - Stainless Steel to handle single 1/4" through 5/8" I.D. hose

Model Number	Hose Capacity of Reel(m)				Approx. Weight Crank Rewind (kg) NET	Reel Dimensions (mm)					
	I.D. (in)	1/4"	3/8"	1/2"		5/8"	A	B	E	F	X
HRP1410		53	38	23	15	12	279	152	419	483	241
HRP1411		107	84	53	38	13	432	305	419	635	394
HRP1412		152	122	91	61	14	584	457	419	787	546
HRP1413		-	152	114	84	15	686	559	419	889	648
HRP1414		-	-	145	107	16	838	711	419	1041	800

Manual Rewind Reels
*For Pest Control, Steam Cleaning,
Pressure Washing, Washdown*

- Lightweight compact reels designed for long lengths of hose.
- Direct crank rewind is permanently attached.
- Cam-lock brake, spring actuated pin lock.
- Standard inlet 90° ball bearing swivel joint 1" female BSPT threads.
- Standard outlet 3/4" female BSPT threads.
- Rollers and roller mounting brackets are accessory items.
Specify roller position.
- Pressures up to 69 bar.
- Temperatures from -7°C to +204°C.

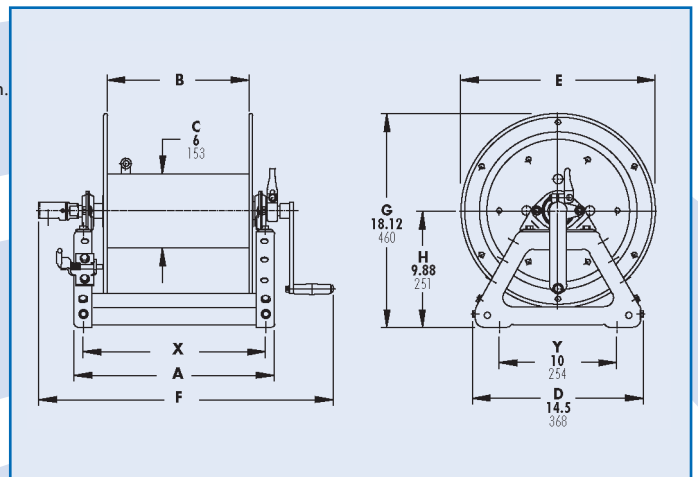
HRP 1420



Notes:

1. Specifications subject to change.
2. Upon request, reels can be supplied with drum lengths other than shown.
3. Dimension "F" is the overall length of standard model reels.
4. Manual rewind available in RT or LB configurations only.
5. Accessory seperated.

6. Electro rewind (seperate) 12-24v DC.



HRP1420 - Stainless Steel to handle single 5/8" or 3/4 " I.D. hose

Model Number	Hose Capacity of Reel(m)		Approx. Weight Crank Rewind (kg) NET	Reel Dimensions (mm)				
	I.D. (in) O.D. (in)	5/8" 3/4"		A	B	E	F	X
HRP1420		23 15	13	330	203	419	594	292
HRP1421		46 30	14	483	356	419	746	445
HRP1422		61 46	15	584	457	419	848	546
HRP1423		84 53	15	686	559	419	950	648
HRP1424		107 69	16	838	711	419	1102	800

Stainless Steel to handle single 5/8" or 3/4" I.D. hose

Manual Rewind Reels

*For Marine/Corrosive Environments,
Washdown Fire Protection, Chemical/Food
Transferj*

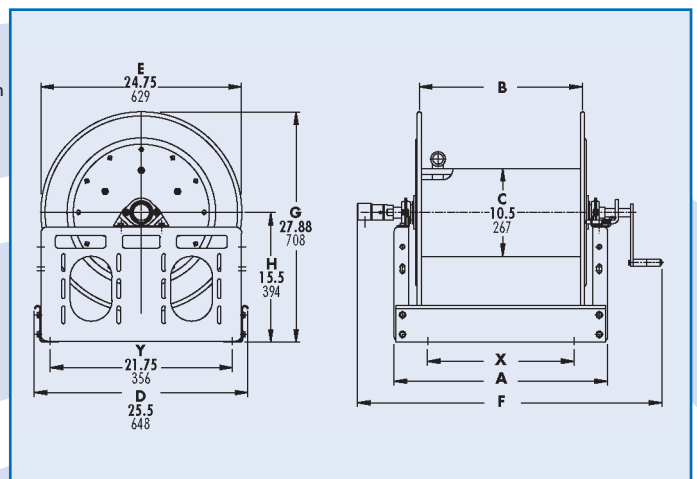
HRP 1430



- Lightweight compact reels designed for long lengths of hose.
- Direct crank rewind is permanently attached.
- Cam-lock brake, spring actuated pin lock.
- Standard inlet 90° ball bearing swivel joint 1" female BSPT threads.
- Standard outlet 3/4" female BSPT threads.
- Rollers and roller mounting brackets are accessory items.
Specify roller position.
- Pressures up to 69 bar.
- Temperatures from -7°C to +204°C.

Notes:

1. Specifications subject to change.
2. Upon request, reels can be supplied with drum lengths other than shown and with disc sizes in other diameters.
3. **Power rewind NOT available on these models.**
4. Dimension "F" is the overall length of standard model reels.
Crank rewind models, 3-1/2" clearance required to remove crank.
5. Subtract 5" from 'F' dimension for disc rewind models.
6. Accessory seperated.



HRP1430 - Stainless Steel to handle 3/4" or 1" I.D. hose

Model Number	Hose Capacity of Reel(m)			Approx. Weight Crank Rewind (kg) NET	Reel Dimensions (mm)				
	I.D. (in) O.D. (in)	3/4"	1"		A	B	F	X	
HRP1430		30	15	61	39	330	191	603	197
HRP1431		46	30	91	43	432	292	705	229
HRP1432		76	46	122	47	533	394	806	330
HRP1433		91	61	168	51	648	508	921	445

Manual Rewind Reels

For Food Processing, Bottling Plants, Fire Protection Water Supply, Chemical Transfer

- Lightweight compact reels designed for long lengths of hose.
- Direct crank rewind is removable.
- Cam-lock brake, spring actuated pin lock.
- Standard inlet 90° ball bearing swivel joint 1" female BSPT threads.
- Standard outlet 1" female BSPT threads.
- Rollers and roller mounting brackets are accessory items.
Specify roller position.
- Pressures up to 69 bar.
- Temperatures from -7° C to +204° C.

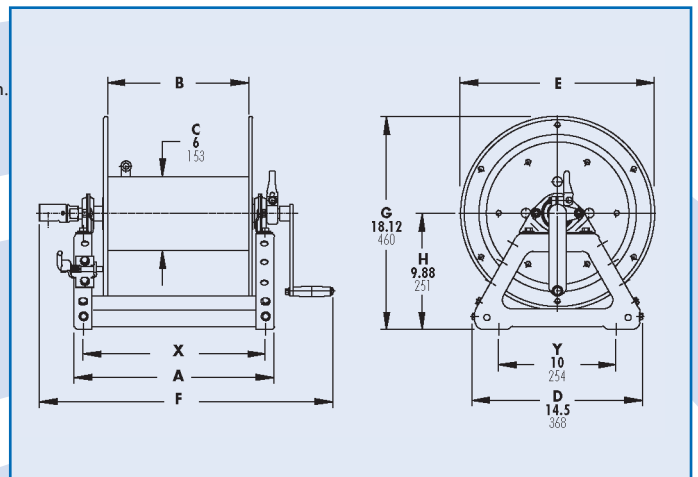
HRP 1440



Notes:

1. Specifications subject to change.
2. Upon request, reels can be supplied with drum lengths other than shown.
3. Dimension "F" is the overall length of standard model reels. Crank rewind reels require 3-1/2" clearance to remove or install crank handle.
4. Accessory seperated.

6. Electro rewind (seperate) 12-24v DC.



HRP1440 - Stainless Steel to handle single 3/4" or 1" I.D. hose

Model Number	Hose Capacity of Reel(m)		Approx. Weight Crank Rewind (kg) NET	Reel Dimensions (mm)						
	I.D. (in)	O.D. (in)		3/4"	1"	A	B	E	F	X
HRP1440			15	11	16	381	254	419	686	343
HRP1441			30	15	21	533	406	419	838	495
HRP1442			46	23	26	686	559	419	991	648
HRP1443			61	30	32	889	762	419	1194	851