



Petroleum Hose Reels

**Home Fuel Delivery • In-plant Refueling • Marine Refueling
Off-road Vehicle/Equipment Refueling • Airport Fueling Operations**

Note to designers and Engineers.

Petroleum Hose Reels

The reels shown in this catalog are the standard of the industry. These models reflect various installation and performance requirements. The high quality of our standard steel construction is only the beginning.

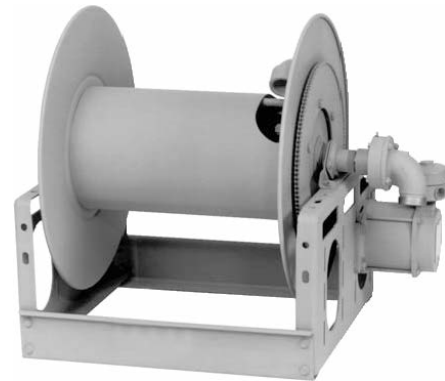
Hose & Reel Products offers any size configuration to fit a defined space, and we construct many models of reels of aluminum or stainless steel. Specifically, we use 5000 and 6000 series aluminum and 304 stainless steel in the manufacture of frames, discs, drums and internals as well as other structural components. This type of construction eliminates the need for maintenance repainting and part replacement due to rust or corrosion.

Contents

Reel Type	I.D. Hose Sizes	Page
Manual or Power Rewind Reels		
HRP1520	1"-1-1/2"	3
HRP1540	1-1/2" - 2"	4
Power Rewind Reels for inverted installation		
HRP1710	1-1/4" - 2"	5
Single Wrap Power Rewind Reels		
HRP1580	1-3/8" - 2"	6
Guide for Series HRP1710 Inverted Installations		7

Manual or Power Rewind reels
To handle single 1" through 1-1/2" I.D. hose

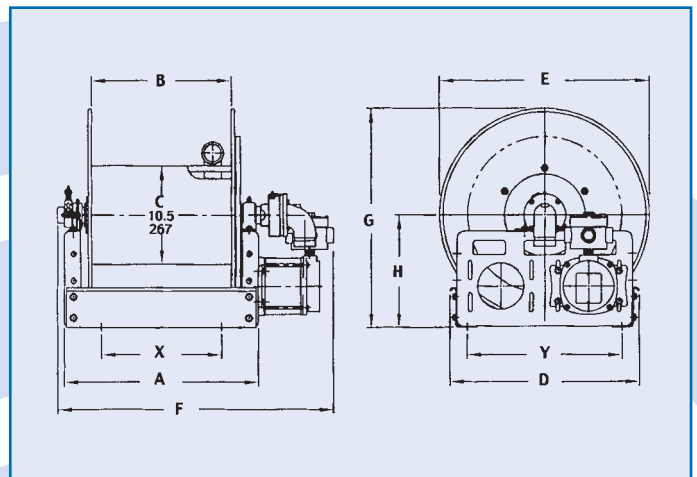
HRP 1520



- A strong, heavy-duty reel.
- Gear-driven crank rewind or chain and sprocket drive powered by an electric, hydraulic or compressed air motor.
- Optional auxiliary crank rewind for power rewind reels.
- Choose EP or EPJ option.
- Comet brake, standard on power rewind without auxiliary crank.
- 90° ball bearing swivel joint with 1-1/2" female BSP threads and 2" victaulic groove.
- Flanged riser with 1-1/2" female BSP threads.
- Inlet, outlet riser, hub assembly are steel.
- Stainless steel, aluminum, at extra cost.
- Rollers may be purchased, specify roller position.
- Mounting brackets are necessary.
- Pressures up to 41 bar.
- Temperatures from -40°C to +79°C.
- Consult factory for other pressures & temps.

Notes:

1. Specifications subject to change.
2. Upon request, reels can be supplied with drum lengths other than shown and with disc sizes in other diameters.
3. When ordering power rewind models, prefix model number with:
A = Air Rewind
EP = Electric Rewind (12v and 24v DC)
EPJ = Explosion proof Electric Rewind
HD = Hydraulic Rewind
4. Accessory seperated.



HRP1520 - Petroleum Reel to handle single 1" through 1 1/2 " I.D. hose

Model Number	Hose Capacity of Reel(m)				Approx. Weight Crank Rewind (kg) NET	Reel Dimensions (mm)										
	I.D. (in)	1"	1-1/4"	1-3/8"		1-1/2"	A	B	C	D	E	F	G	H	X	Y
HRP1520		21	18	15	15	45	584	445	521	476	749	810	546	308	381	425
HRP1521		30	27	26	23	51	749	610	521	476	914	975	546	308	546	425
HRP1522		38	30	30	30	58	953	813	521	476	1118	1178	546	308	749	425
HRP1523		30	27	24	15	46	533	394	521	578	699	759	597	308	330	425
HRP1524		46	46	38	23	54	749	610	521	578	914	975	597	308	546	425
HRP1525		61	58	52	30	59	889	749	521	578	1054	1115	597	308	686	425
HRP1526		34	21	18	15	48	432	292	648	629	597	657	708	394	229	552
HRP1527		43	29	26	23	52	533	394	648	629	699	759	708	394	330	552
HRP1528		61	40	37	30	56	648	508	648	629	813	873	708	394	445	552
HRP1529		27	15	15	15	48	330	191	648	730	495	556	759	394	197	552
HRP1530		47	43	24	23	52	432	292	648	730	597	657	759	394	229	552

Manual or Power Rewind Reels
To handle single 1-1/2" or 2" I.D. hose

- Gear-driven crank rewind or chain and sprocket drive powered by an electric, hydraulic or compressed air motor.
- Optional auxiliary crank rewind for power rewind reels.
- Choose EP or EPJ option.
- Comet brake on power rewind without auxiliary crank.
- 90° ball bearing swivel joint with 2" victaulic.
- Flanged riser with 2" female BSP threads.
- Inlet, riser, hub assembly are steel.
- Stainless steel, aluminum at extra cost.
- Rollers may be purchased, specify roller position.
- Mounting brackets are necessary.
- Pressures up to 41 bar.
- Temperatures from -40°C to +79°C.
- Consult factory for other pressures & temps.

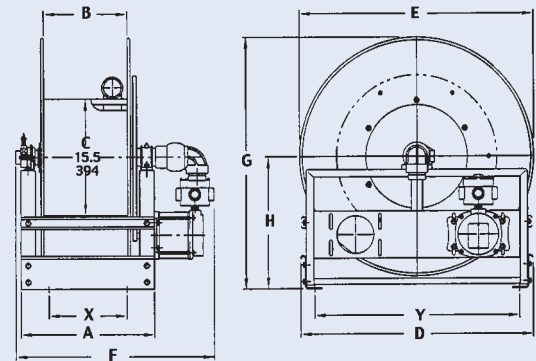
HRP 1540



EPJ Option Shown

Notes:

1. Specifications subject to change.
2. When ordering power rewind models, prefix model number with:
A = Air Rewind
EP = Electric Rewind (12v and 24v DC)
EPJ = Explosion proof Electric Rewind
HD = Hydraulic Rewind
3. Accessory seperated.



HRP1540 - Petroleum Reel to handle single 1-1/2" or 2 " I.D. hose

Model Number	Hose Capacity of Reel(m)		Approx.Weight Crank Rewind (kg) NET	Reel Dimensions (mm)									
	I.D. (in)	1-1/2" 2"		A	B	C	D	E	F	G	H	X	Y
HRP1540		21 15	47	603	445	686	654	787	803	676	349	413	591
HRP1541/HRP105		30 23	66	768	610	686	654	953	969	676	349	578	591
HRP1542		43 30	89	972	813	686	654	1156	1172	676	349	781	591
HRP1543		18 15	32	400	241	800	806	584	600	848	445	210	705
HRP1544		30 23	42	502	343	800	806	686	702	848	445	311	705
HRP1545		43 30	60	667	508	800	806	851	867	848	445	476	705
HRP1546		76 46	82	603	445	1016	991	787	838	1013	518	413	940
HRP1547		107 61	99	819	660	1016	991	1003	1054	1013	518	578	940

Power Rewind reels for inverted installation

To handle single 1-1/4" through 2" I.D. hose

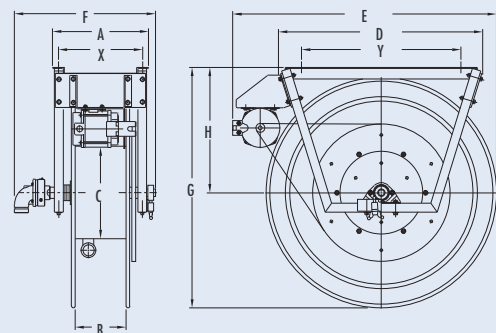
- Chain and sprocket drive powered by an electric, hydraulic, or compressed air motor.
- Comet brake, air caliper brake, standard.
- 90° ball bearing swivel joint with 1-1/2" female BSP and 2" groove.
- Optional 2" intervals also available.
- Flanged riser with 1-1/2" female BSP threads.
- Inlet, riser, hub assembly are steel.
- Stainless steel, aluminum, at extra cost.
- Pressures up to 41 bar.
- Temperatures from -40°C to +79°C.
- Consult factory for other pressures & temps.



Standard Configuration Shown

Notes:

1. Specifications subject to change.
2. When ordering power rewind models, prefix model number with:
 - A = Air Rewind
 - EP = Electric Rewind (12v and 24v DC)
 - EPJ = Explosion proof Electric Rewind
 - HD = Hydraulic Rewind
3. Accessory seperated.



HRP1710- Petroleum Reel to handle single 1-1/4" through 2" I.D. hose

Model Number	Hose Capacity of Reel(m)				Approx. Weight (kg) NET	Reel Dimensions (mm)										
	I.D. (in)	1-1/4"	1-3/8"	1-1/2"		2"	A	B	C	D	E	F	G	H	X	Y
HRP1710		55	52	52	-	79	565	394	267	822	1041	749	861	457	514	616
HRP1711		64	44	44	-	86	514	343	267	822	1060	699	886	457	464	616
HRP1712		56	35	35	21	118	413	241	394	870	1156	597	1035	540	362	686
HRP1713		69	46	46	29	122	464	292	394	870	1156	648	1035	540	464	686
HRP1714		53	43	43	18	127	362	191	394	991	1295	546	1175	603	311	797
HRP1715		76	58	58	29	132	413	241	394	991	1295	597	1175	603	362	797

Single Wrap Power Rewind Reels

To handle single 1-1/2" through 2" I.D. hose

- Effortless and fast rewinding, wrapping, guiding of hose.
- Chain and sprocket drive powered by electric, hydraulic, compressed air motor.
- Auxiliary crank rewind.
- 12 volt rewind, comet brake standard.
- Air brake optional.

- **HRP1580-1582 series** - 90° ball bearing swivel joint 1-1/2" female BSP threads, 2" victaulic groove, flanged riser with 1-1/2" female BSP threads.
- **HRP1584-1586 series** - 90° ball bearing swivel joint 2" victaulic groove, flanged riser with 2" female BSP threads.

Series HRP1587-1589

- 90° ball bearing swivel joint 3" victaulic groove, flanged riser with 3" female BSP threads.
- Pressures up to 10 bar.
- Temperatures from -29°C to +107°C.

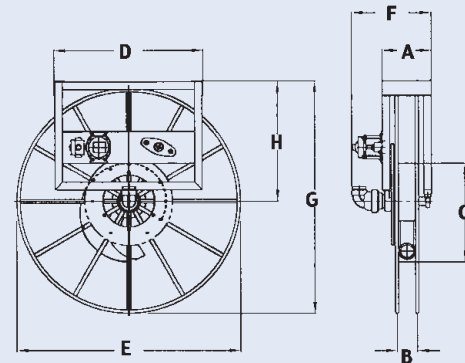
- Inlet, hub assembly is aluminum.
- Joint & riser ductile iron for petroleum fuel.
- Pressures up to 41 bar.
- Temperatures from -40°C to +79°C.
- Standard with a reduction unit only. Electric clutch units optional.
- Consult factory for other pressures & temps.

Notes:

1. Specifications subject to change.
2. When ordering power rewind models, prefix model number with:
 - A = Air Rewind
 - EP = Electric Rewind (12v and 24v DC)
 - EPJ = Explosion proof Electric Rewind
 - HD = Hydraulic Rewind
3. Accessory seperated.



Standard Model Shown
(hose not included)



HRP1580 - Aviation Reels to handle single 1-1/2" through 3" I.D. hose

Model Number	Hose Capacity of Reel(m)					Approx. Weight (kg) NET	Reel Dimensions (mm)						
	I.D. (in) O.D. (in)	1-1/2"	2"	2-1/2"	3"		A	B	C	E	F	G	H
HRP1580		15	-	-	-	141	297	70	508	1219	445	1270	660
HRP1581		23	-	-	-	150	279	70	508	1422	445	1473	762
HRP1582		30	-	-	-	154	279	70	508	1575	445	1626	838
HRP1583		40	-	-	-	159	279	70	508	1829	445	1880	965
HRP1584		-	15	-	-	168	305	95	610	1422	489	1473	762
HRP1585		-	23	-	-	177	305	95	610	1575	489	1626	838
HRP1586		-	30	-	-	181	305	95	610	1778	489	1829	940
HRP1587		-	-	15	15	182	330	121	762	1575	540	1626	838
HRP1588		-	-	23	-	186	330	121	762	1778	540	1829	940
HRP1589		-	-	30	-	191	330	121	762	1981	540	2032	1041

Guide for Series HRP1710 Inverted Installations

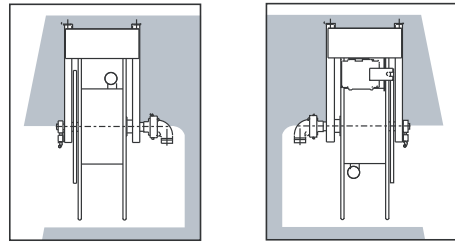
For reels with 1-1/2" I.D. hub assembly to handle 1-1/4" through 2" I.D. hose.

When ordering a reel for inverted installation, please specify which of the following component locations you prefer. Please specify component location by letter. If not otherwise specified, reels will be shipped as shown in A.

Inverted Installations

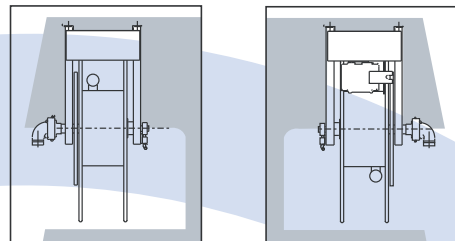
Installation A

Hose unwinds from top of reel to curbside and from bottom of reel to streetside. Swivel joint is on side nearest tank. Rewind mechanism and braking devices are at the rear of the truck. Rewind motor is on streetside.



Installation B

Hose unwinds from top of reel to curbside and from bottom of reel to streetside. Swivel joint, rewind mechanism, braking and locking devices are at the rear of the truck. Rewind motor is on streetside.



Installation C

Hose unwinds from bottom of reel to curbside and from top of reel to streetside. Swivel joint is on side nearest tank. Rewind mechanism, braking and locking devices are at the rear of the truck. Rewind motor is on streetside.

