



# Heavy Industrial Hose Reels

**Washdown • Chemical Transfer • Potable Water • Food Processing  
Farmaceuticals & Cosmetics • Fueling • Fire Protection • Dairy Operations  
Bottling Plants**

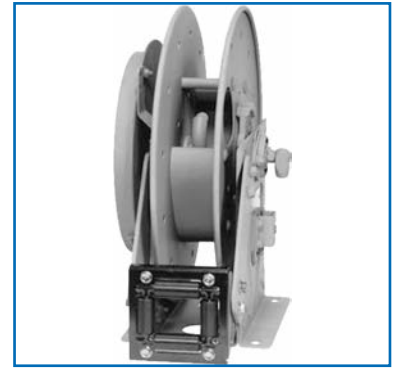
## Note to the designers & engineers.

### Industrial Hose Reels

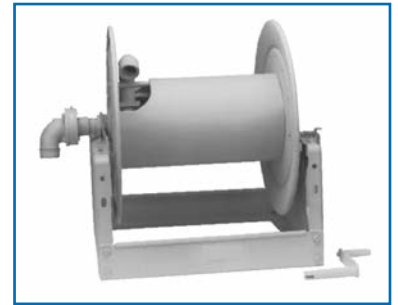
**Hose & Reel Products** is the biggest european distributor of high quality hose and cable reels for most every conceivable application. This catalog describes and gives specifications on our most popular hose reels. If you don't see what you're looking for, give us a call and we will help you to meet your needs.

### Contents

Reel Type	I.D. Hose Sizes	Page
<b>Spring Rewind Reels</b>		
HRP1072	1/4" - 3/8"	3
HRP1090	1/4" - 1/2"	4
HRP1150	1/4" - 3/4"	5
HRP1100	1/4" - 1/2"	6
HRP1160	3/8" - 1/2"	7
HRP1110	3/4" - 1"	8
HRP1170	3/4" - 1"	9
HRP1180	1-1/4" - 1-1/2"	10
<b>Compact Manual Rewind Reels</b>		
HRP1280	1/4" - 3/8"	11
<b>Power and Manual Rewind Reels</b>		
HRP1300	1/4" - 5/8"	12
HRP1310	5/8" - 3/4"	13
HRP1320	1/4" - 1/2"	14
HRP1470	1/4" - 1/2"	15
HRP1340	3/4" - 1"	16
HRP1360	1" - 1-3/4"	17
HRP1380	3/4" - 1"	18
HRP1740	3/4" - 1"	19
HRP1570	1/2" - 1"	20
HRP1590	3/4" - 1"	21
HRP1730	1" - 1-1/2"	22
HRP1760	1-1/2" - 2"	23
HRP1770	2" - 3"	24
<b>Portable Hose Reels</b>		
HRP1290	3/8"-5/8"	25
<b>Storage Reels</b>		
HRP1390	1/2" - 1"	26
HRP1780	1/4" - 1"	27
HRP1790	1/2" - 1-1/2"	28



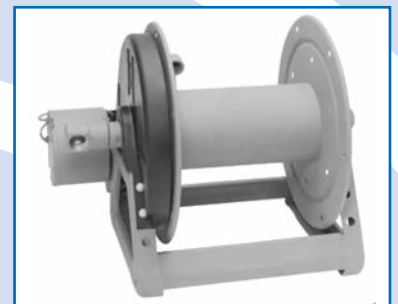
Spring Rewind Reels



Manual Rewind Reels



Compact Manual Rewind Reels



Power Rewind Reels



Storage Reels

**High Pressure Spring Rewind Reel**  
*For Chassis Grease, Hydraulics, Air/Water*

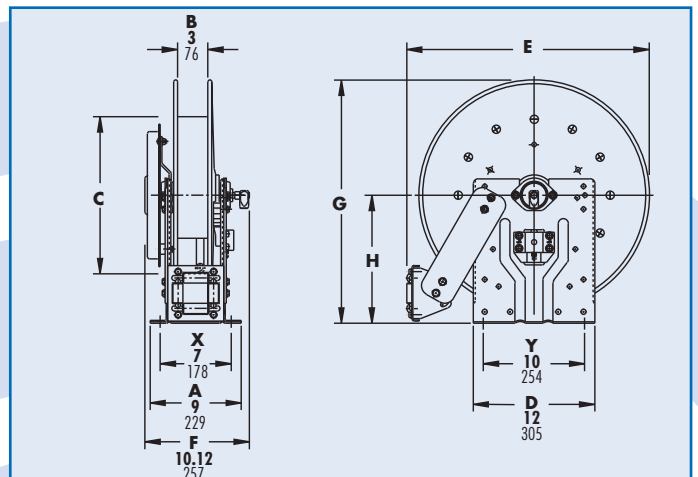
**HRP1072**

- Compact frame and narrow base.
- Non sparking ratchet assembly.
- Declutching arbor to prevent damage from reverse winding.
- Standard inlet 90° swivel joint 1/4" female BSPT threads. 3/8" female BSPT threads are optional and must be specified.
- Standard outlet is 1/4" female BSPT threads. 3/8" female BSPT threads are optional and must be specified.
- Standard pressure up to 689 bar, product temperatures from -40° C to +121° C.
- Optional 1/4" 207 bar, or 3/8" 207 bar or 552 bar.
- 4-roller assembly.



**Notes:**

1. Specifications subject to change.
2. Reel models and capacities shown are for standard drag applications; for vertical lift applications consult H&RP.
3. Other sizes, from standard components, available on request.
4. For a detailed parts breakdown drawing, request ISO 92.
5. Accessory seperated.



**HRP1072 - Industrial Reel** to handle 1/4" or 3/8 " I.D. hose

Model Number	Hose Capacity of Reel(m)		Approx. Weight (kg) NET	Reel Dimensions (mm)			
	I.D. (in)	1/4" 3/8"		C	E	G	H
HRP1072		8    8	22	203	448	413	232
HRP1073		11    11	23	267	470	432	232
HRP1074		15    15	29	267	527	508	270
HRP1075		23    23	34	394	603	610	321

Industrial Reel to handle 1/4" or 3/8 " I.D. hose

**Spring Rewind Dual Hose Reels**  
*For Hydraulics, Air/Water, Paint Spraying*

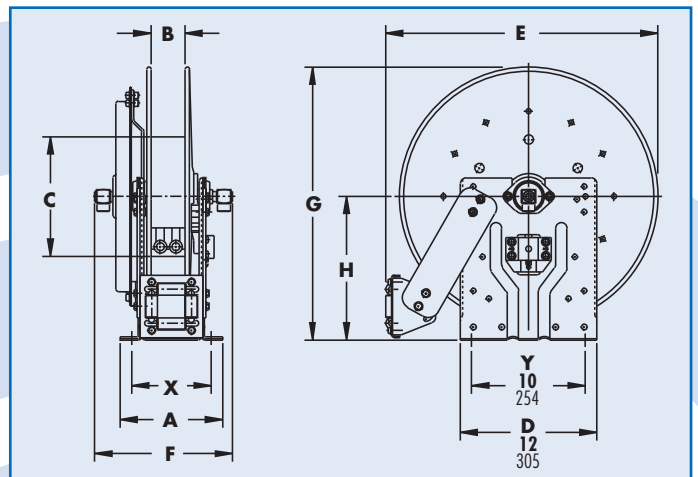
**HRP1090**

- Narrow frame and compact mounting base.
- Non sparking ratchet assembly.
- Declutching arbor to prevent damage from reverse winding.
- Standard inlets 90° balanced pressure swivel joints 1/2" female BSPT threads.
- Standard outlets 1/2" female BSPT threads.
- Pressures up to 207 bar.
- Temperatures from -51°C to +200°C.
- 4-way roller assembly.
- **Reel can also be used with oxygen/acetylene(welding)**



**Notes:**

1. Specifications subject to change.
2. Reel models and capacities shown are for standard drag applications; for vertical lift applications consult H&RP.
3. Other sizes, from standard components, available on request.
4. For a detailed parts breakdown drawing request ISO 80.
5. Accessory seperated.



**HRP1090 - Industrial Reel to handle dual 1/4" through 1/2" I.D. hose**

Model Number	Hose Capacity of Reel(m)			Approx. Weight (kg) NET	Reel Dimensions (mm)								
	I.D. (in)	1/4" 5/8"	3/8" 3/4"		1/2" 7/8"	A	B	C	E	F	G	H	X
HRP1090		2/11	2/11	2/6	28.6	229	76	267	527	298	508	270	178
HRP1091		2/15	2/15	2/8	29.9	279	127	267	527	349	508	270	229
HRP1092		2/20	2/18	2/9	39.5	229	76	267	603	298	610	321	178
HRP1093		2/23	2/23	2/15	42.2	279	127	394	641	349	660	346	229
HRP1094		2/31	2/26	-	54.4	279	127	394	641	368	660	346	229

Industrial Reel to handle dual 1/4" through 1/2" I.D. hose

## Spring Rewind Dual Hose Reels For Hydraulics, Air/Water, Paint Spraying

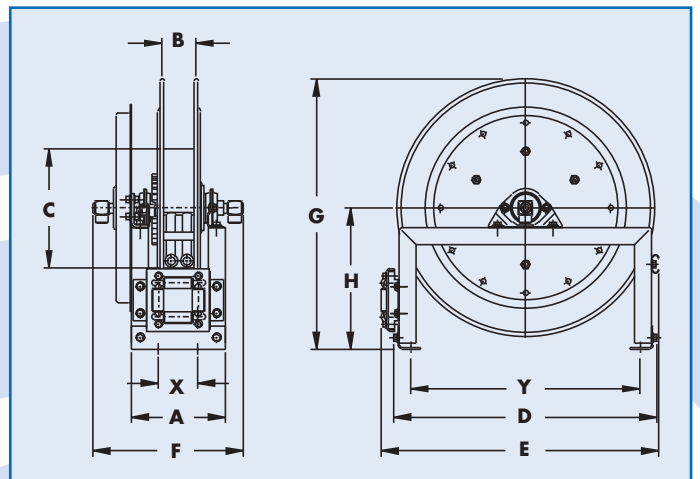
- Rollformed channel frame for heavy duty applications.
- Non sparking ratchet assembly.
- Declutching arbor to prevent damage from reverse winding.
- Standard inlets 90° balanced pressure swivel joints 1/2" female BSPT threads. (1" inlet available).
- Standard outlets 1/2" female BSPT threads. (3/4" outlet available).
- Pressures to 207 bar.
- Temperatures from -51°C to +121°C.
- 4-way roller assembly.
- **Reel can also be used with oxygen/ acetylene(welding)**

# HRP 1150



### Notes:

1. Specifications subject to change.
2. Reel models and capacities shown are for standard drag applications; for vertical lift applications consult H&RP.
3. Other sizes, from standard components, available on request.
4. For a detailed parts breakdown drawing, request ISO 8.
5. Accessory seperated.



### HRP1150 - Industrial Reel to handle dual 1/4" through 3/4" I.D. hose

Model Number	Hose Capacity of Reel(m)					Approx. Weight (kg) NET	Reel Dimensions (mm)									
	I.D. (in)	1/4"	3/8"	1/2"	3/4"		A	B	C	D	E	F	G	H	X	Y
HRP1150		2/23	2/23	2/15	-	42.2	260	127	394	635	663	318	657	343	140	559
HRP1151		2/31	2/26	-	-	54.4	260	127	394	635	663	400	657	343	140	559
HRP1152		-	-	2/31	2/15	59	286	152	394	724	752	552	797	432	165	648

Industrial Reel to handle dual 1/4" through 3/4" I.D. hose

## Spring Rewind Reels

*For Lubrication, Air/Water, Assembly Operations, Washdown, Air Tools, General Industrial Applications*

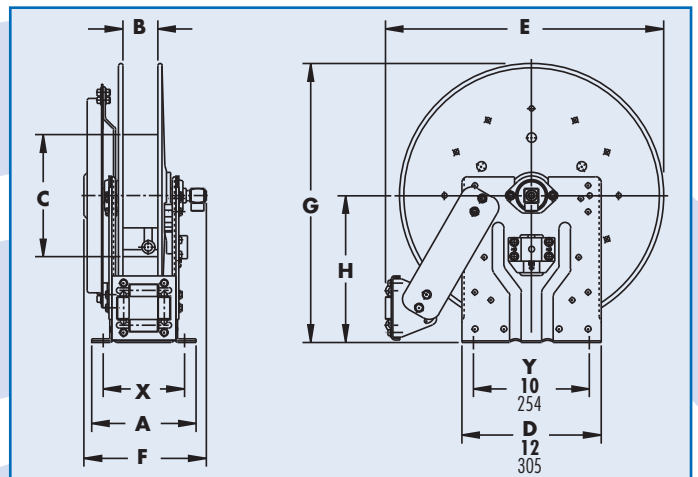
- Standard HRP1110 Series has a narrow frame and compact mounting base.
- Non sparking ratchet assembly.
- Declutching arbor to prevent damage from reverse winding.
- Standard inlet 90° balanced pressure swivel joint 1/2" female BSPT threads.
- Standard outlet 1/2" female BSPT threads.
- Pressures up to 690 bar.
- Temperatures from -51°C to +200°C.
- 4-way roller assembly.

# HRP1100



### Notes:

1. Specifications subject to change.
2. Reel models and capacities shown are for standard drag applications; for vertical lift applications consult H&RP.
3. Other sizes, from standard components, available on request.
4. For a detailed parts breakdown drawing, request ISO 79.
5. Accessory seperated.



### HRP1100 - Industrial Reel to handle 1/4" through 1/2" I.D. hose

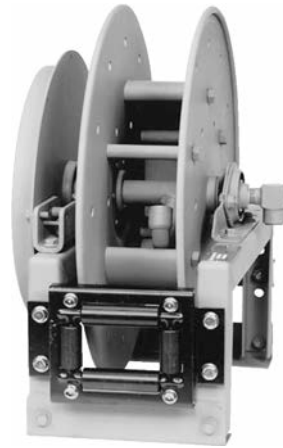
Model Number	Hose Capacity of Reel(m)			Approx. Weight (kg) NET	Reel Dimensions (mm)								
	I.D. (in)	1/4"	3/8"		1/2"	A	B	C	E	F	G	H	X
HRP1100		-	8	8	24	254	102	203	448	286	413	232	203
HRP1101		-	15	15	29	254	102	267	527	286	508	270	203
HRP1102		30	23	20	43	254	102	394	603	286	610	321	203
HRP1103		-	30	30	44	305	152	394	641	337	660	346	254

## Spring Rewind Reels

*For Lubrication, Air/Water, Assembly Operations, Washdown, Air Tools, General Industrial Applications*

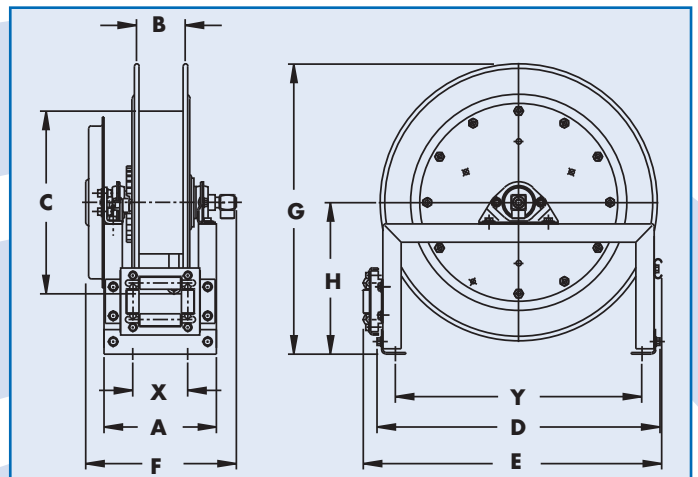
- Rollformed channel frame for heavy-duty applications.
- Non sparking ratchet assembly.
- Decutching arbor to prevent damage from reverse winding.
- Standard inlet 90° balanced pressure swivel joint 1/2" female BSPT threads.
- Standard outlet 1/2" female BSPT threads.
- Pressures up to 690 bar.
- Temperatures from -51°C to +200°C.
- 4-way roller assembly.

## HRP 1160



### Notes:

1. Specifications subject to change.
2. Reel models and capacities shown are for standard drag applications; for vertical lift applications consult H&RP
3. Other sizes, from standard components, available on request.
4. For a detailed parts breakdown drawing, request ISO 66.
5. Accessory seperated.



### HRP1160 - Industrial Reel to handle 3/8" through 1/2" I.D. hose

Model Number	Hose Capacity of Reel(m)		Approx. Weight (kg) NET	Reel Dimensions (mm)									
	I.D. (in)	3/8" 1/2"		A	B	C	D	E	F	G	H	X	Y
HRP1160		23 23	41	235	102	394	635	663	324	657	343	114	559
HRP1161		30 30	44	286	152	394	635	663	375	657	343	165	559
HRP1162		46 38	51	286	152	508	724	752	394	797	432	165	648

## Spring Rewind Reels

**For Fuel Dispensing(Consult H&RP), Waste Oil Evacuation, Air/Water**

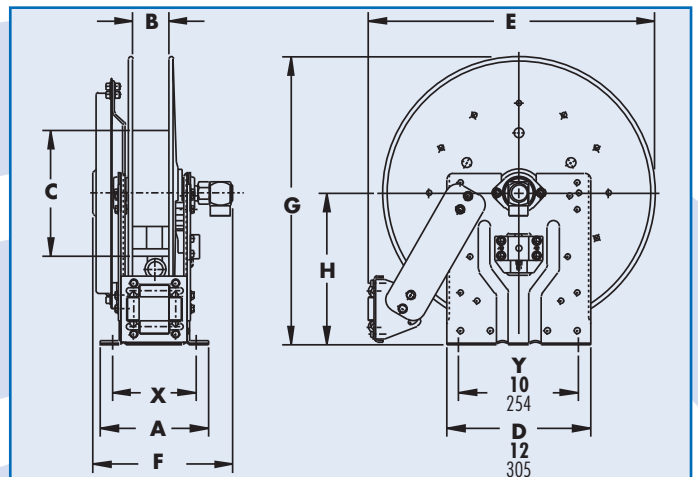
- Standard HRP1110 series has a narrow frame and compact mounting base.
- Non sparking ratchet assembly.
- Decutching arbor to prevent damage from reverse winding.
- Standard inlet 90° balanced pressure swivel joint 1" female BSPT threads.
- Standard outlet 1" female BSPT threads.
- Pressures up to 350 bar.
- Temperatures from -40°C to +200°C.
- 4-way roller assembly

## HRP1110



### Notes:

1. Specifications subject to change.
2. Reels models and capacities shown are for standard drag applications; for vertical lift applications consult H&RP
3. Other sizes, from standard components, available on request.
4. For a detailed parts breakdown drawing, request ISO 81.
5. Accessory seperated.



### HRP1110 - Industrial Reel to handle 3/4" or 1" I.D. hose

Model Number	Hose Capacity of Reel(m)		Approx. Weight (kg) NET	Reel Dimensions (mm)							
	I.D. (in)	3/4" 1"		A	B	C	E	F	G	H	X
HRP1110		15 8	39	305	152	267	603	381	610	321	254
HRP1111		21 15	46	305	152	267	641	381	660	346	254



## Spring Rewind Reels

**For Fuel Dispensing(Consult H&RP), Waste Oil Evacuation, Air/Water**

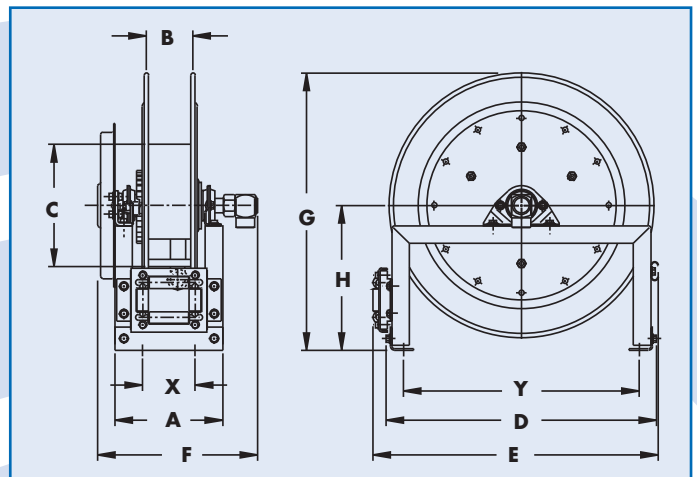
- Rollformed channel frame for heavy-duty applications.
- Non sparking ratchet assembly.
- Decutching arbor to prevent damage from reverse winding.
- Standard inlet 90° balanced pressure swivel joint 1" female BSPT threads.
- Standard outlet 1" female BSPT threads.
- Pressure up to 350 bar.
- Temperatures from -40°C to +200°C.
- 4-way roller assembly.

# HRP1170



### Notes:

1. Specifications subject to change.
2. Reels models and capacities shown are for standard drag applications; for vertical lift applications consult H&RP
3. Other sizes, from standard components, available on request.
4. For a detailed parts breakdown drawing, request ISO 42.
5. Accessory seperated.



### HRP1170 - Industrial Reel to handle 3/4" or 1" I.D. hose

Model Number	Hose Capacity of Reel(m)		Approx. Weight (kg) NET	Reel Dimensions (mm)									
	I.D. (in)	3/4" 1"		A	B	C	D	E	F	G	H	X	Y
HRP1170		18 11	44	235	102	267	635	663	343	657	343	114	559
HRP1171		21 15	46	286	152	267	635	663	394	657	343	165	559
HRP1172/HRP1049		26 23	59	337	203	267	635	686	464	657	343	216	559
HRP1173		- 30	62	337	203	267	724	775	464	797	432	216	648
HRP1174		30 -	66	337	203	394	724	775	464	797	432	216	648

Industrial Reel to handle 3/4" or 1" I.D. hose

## Spring Rewind Reels

**For Bulk Transfer, Fuel Dispensing(Consult H&RP), Suction/Discharge(Consult H&RP)**

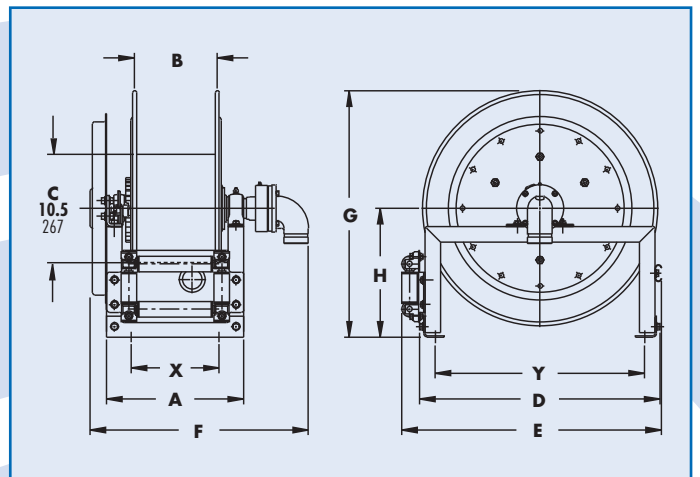
- Rollformed channel frame construction.
- Non sparking ratchet assembly.
- Decutching arbor to prevent damage from reverse winding.
- Standard inlet 90° swivel joint 1-1/2" female BSPT threads and 2" victaulic groove.
- Standard outlet 1-1/2" female BSPT threads.
- Pressures up to 69 bar.
- Temperatures from -40°C to +150°C.
- 4-way roller assembly.
- For additional pressure consult H&RP

# HRP1180



### Notes:

1. Specifications subject to change.
2. Reels models and capacities shown are for standard drag applications; for vertical lift applications consult H&RP
3. Other sizes, from standard components, available on request.
4. For a detailed parts breakdown drawing, request ISO 29.
5. Accessory seperated.



### HRP1180 - Industrial Reel to handle 1-1/4" or 1-1/2" I.D. hose

Model Number	Hose Capacity of Reel(m)		Approx. Weight (kg) NET	Reel Dimensions (mm)								
	I.D. (in)	O.D. (in)		A	B	D	E	F	G	H	X	Y
HRP1180	1-1/4"	1-1/2"	47	387	254	591	641	610	607	318	267	514
HRP1181	1-1/4"	1-1/2"	58	337	203	635	686	578	657	343	216	559
HRP1182	1-1/4"	1-1/2"	71	387	254	724	775	629	797	432	267	648

Industrial Reel to handle 1-1/4" or 1-1/2" I.D. hose

**Manual Rewind Reels**  
*For Pressure Washing, Spray Operations,  
Washdown, Air*

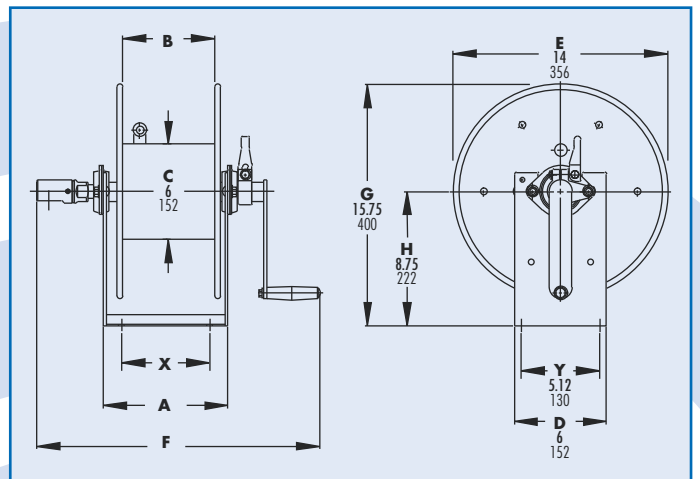
**HRP 1280**



- Lightweight
- Compact
- Direct crank rewind permanently attached.
- Adjustable cam lock brake standard.
- Optional pin lock available.
- Standard inlet 90° ball bearing swivel joint 1/2" female BSPT threads.
- Standard outlet 3/8" female BSPT threads.
- Pressures up to 207 bar.
- Temperatures from -7°C to +200°C.
- Consult H&RP for other pressure & temperature.

**Notes:**

1. Specifications subject to change.
2. Other sizes, from standard components, available on request.
3. For a detailed parts breakdown drawing, request ISO 165.
4. Accessory seperated.



**HRP1280 - Industrial Reel to handle single 1/4" or 3/8" I.D. hose**

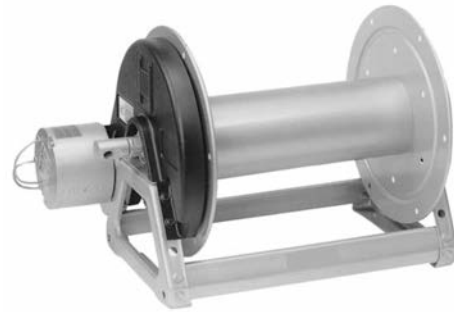
Model Number	Hose Capacity of Reel(m)		Approx. Weight Crank Rewind (kg) NET	Reel Dimensions (mm)			
	I.D. (in)	3/8" O.D. (in)		A	B	F	X
HRP1280	1/4"	3/8"	10	206	152	483	102
HRP1281	1/4"	3/4"	11	257	203	533	152
HRP1282	3/8"	3/4"	11	359	305	635	254

Industrial Reel to handle single 1/4" or 3/8" I.D. hose

## Manual or Power Rewind Reels

*For Lawn Care, Pest Control, Pressure Washing, Agriculture, Steam Cleaning*

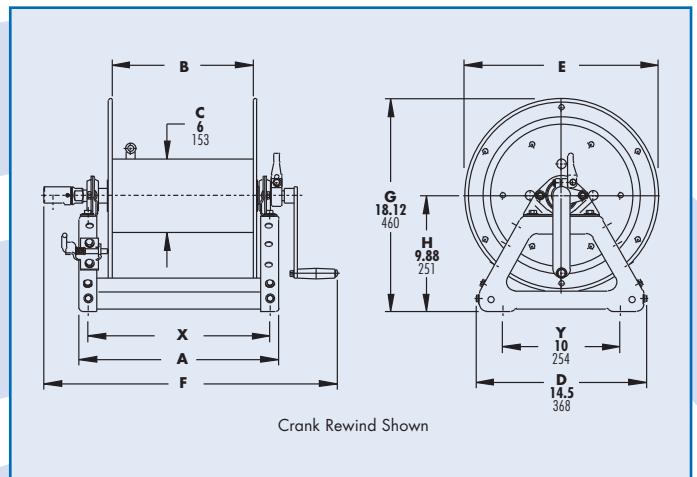
# HRP 1300



- Lightweight compact reels designed for long lengths of hose in manual and power rewind.
- Direct crank rewind is permanently attached.
- Chain and sprocket drive powered by electric, hydraulic, or compressed air motor.
- Direct crank rewind, cam lock drag brake, spring actuated pin lock.
- Standard inlet 90° ball bearing swivel joint 1/2" female BSPT threads.
- Standard outlet 1/2" female BSPT threads.
- Optional Rollers: Specify roller position when ordering.
- Pressures up to 690 bar.
- Temperatures from -7°C to +204°C.
- Consult H&RP for other pressure & temperature.

### Notes:

1. Specifications subject to change.
2. Upon request, reels can be supplied with drum lengths other than shown.
3. For a detailed parts breakdown drawing, request, ISO 90 (power), ISO 179 (manual).
4. Accessory separated.
5. When ordering power rewind models, prefix model number with:  
A = Air Rewind  
EP = Electric Rewind (12v and 24v DC)  
HD = Hydraulic Rewind

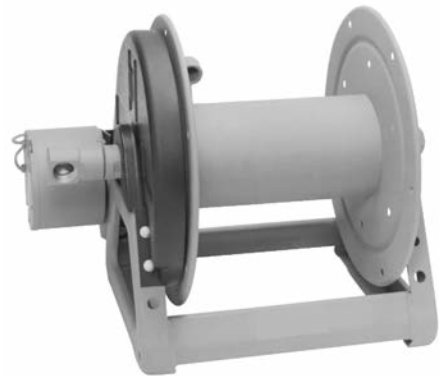


### HRP1300 - Industrial Reel to handle single 1/4" through 5/8" I.D. hose

Model Number	Hose Capacity of Reel(m)					Approx. Weight Crank Rewind <sup>3</sup> (kg) NET	Reel Dimensions (mm)						
	I.D. (in)	1/4"	3/8"	1/2"	5/8"		A	B	Crank E	Power E	Crank F	Power F	X
HRP1300		61	46	30	23	12	279	152	419	483	483	419	241
HRP1301		130	91	61	46	13	432	305	419	483	635	572	394
HRP1302		191	137	99	69	14	584	457	419	483	787	724	546
HRP1303		-	168	122	91	15	686	559	419	483	889	826	648
HRp1304		-	-	152	114	16	838	711	419	483	1041	978	800

**Manual or Power Rewind Reels**  
*For Air Compressors, Washdown*

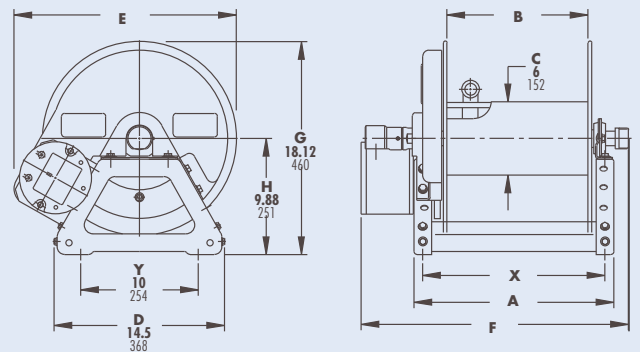
**HRP 1310**



- Lightweight compact reels designed for long lengths of hose in manual and power rewind.
- Direct crank rewind is permanently attached.
- Chain and sprocket drive powered by electric, hydraulic, or compressed air motor.
- Direct crank rewind, adjustable spring tension brake, spring actuated pin lock.
- Standard inlet 90° ball bearing swivel joint 1" female BSPT threads.
- Standard outlet 3/4" female BSPT threads.
- Optional Rollers: Specify roller position when ordering.
- Pressures up to 200 bar.
- Temperatures from -40°C to +121°C.
- Consult H&RP for other pressure & temperature.

**Notes:**

1. Specifications subject to change.
2. Upon request, reels can be supplied with drum lengths other than shown.
3. For a detailed parts breakdown drawing, request ISO 136.
4. Accessory seperated.
5. When ordering power rewind models, prefix model number with:  
A = Air Rewind  
EP = Electric Rewind (12v and 24v DC)  
HD = Hydraulic Rewind

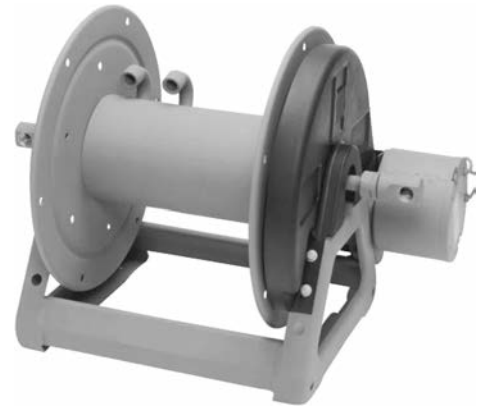


**HRP1310 - Industrial Reel** to handle single 5/8" or 3/4" I.D. hose

Model Number	Hose Capacity of Reel(m)		Approx. Weight Crank Rewind <sup>3</sup> (kg) NET	Reel Dimensions (mm)							
	I.D. (in) O.D. (in)	5/8" 1"		3/4" 1-9/32"	A	B	Crank E	Power E	Crank F	Power F	X
HRP1310		23	15	13	330	203	419	483	581	470	292
HRP1311		46	30	14	483	356	419	483	733	622	445
HRP1312		69	46	15	584	457	419	483	835	724	546
HRP1313		91	55	15	686	559	419	483	937	826	648
HRP1314		114	70	16	838	711	419	483	1089	978	800

**Manual or Power Rewind Reels**  
*For Hydraulics, Air/water*

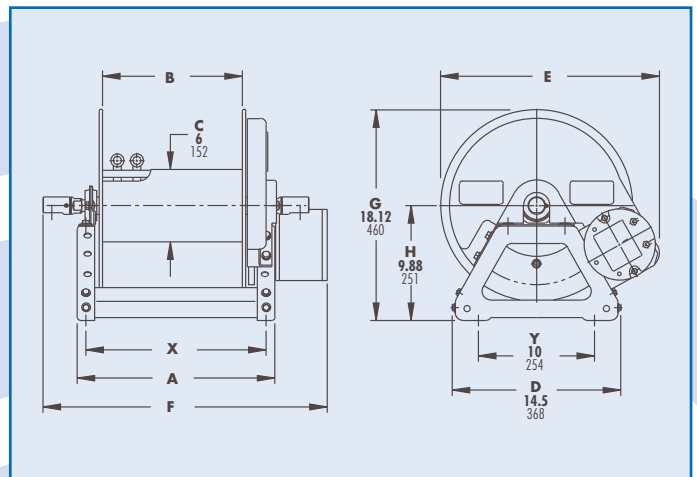
**HRP 1320**



- Two swivel joint inlets and two outlet risers to handle two equal lengths of hose.
- Chain-drive crank rewind or chain and sprocket rewind powered by an electric, or compressed air motor.
- MX Crank rewind reels pinion brake as standard.
- Power rewind reels are not supplied with a brake.
- Standard inlets 90° ball bearing swivel joints 1/2" female BSPT threads.
- Standard outlets 1/2" female BSPT threads.
- Pressures up to 690 bar.
- Temperatures from -7°C to +204°C.
- Reels for use with oxygen/acetylene.
- Consult H&RP for other pressure & temperature.

**Notes:**

1. Specifications subject to change.
2. Upon request, reels can be supplied with drum lengths other than shown and with disc sizes in other diameters.
3. For a detailed parts breakdown drawing, request ISO 112.
4. Accessory seperated.
5. When ordering power rewind models, prefix model number with:  
A = Air Rewind  
EP = Electric Rewind (12v and 24v DC)  
HD = Hydraulic Rewind



**HRP1320 - Industrial Reel** to handle dual 1/4" through 1/2" I.D. hose

Model Number	Hose Capacity of Reel(m)			Approx. Weight Crank Rewind <sup>3</sup> (kg) NET	Reel Dimensions (mm)							
	I.D. (in) O.D. (in)	1/4" 5/8"	3/8" 3/4"		1/2" 7/8"	A	B	Crank E	Power E	Crank F	Power F	X
HRP1320		2/38	2/31	2/15	15	330	203	470	483	533	527	292
HRP1321		2/61	2/46	2/31	15	432	305	470	483	635	629	394
HRP1322		2/91	2/69	2/46	16	584	457	470	483	787	781	546
HRP1323		2/114	2/76	2/53	17	686	559	470	483	889	883	648
HRP1324		2/145	2/107	2/76	18	838	711	470	483	1084	1035	800

Industrial Reel to handle dual 1/4" through 1/2" I.D. hose

**Manual Rewind Reels**  
*For Hydraulics, Air/water*

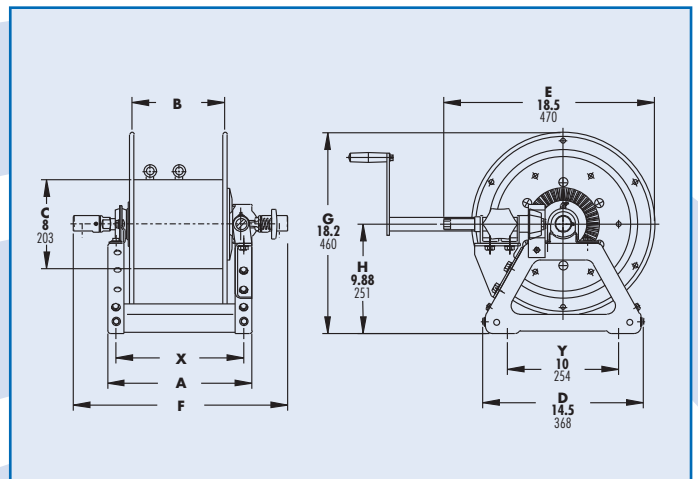
**HRP 1470**

- Two swivel joint inlets and two outlet risers to handle two equal lengths of hose.
- Gear-drive crank rewind.
- Pinion brake as standard.
- Standard inlets 90° ball bearing swivel joints 1/2" female BSPT threads.
- Standard outlets 1/2" female BSPT threads.
- Pressures up to 690 bar.
- Temperatures from -7°C to +204°C.
- Consult H&RP for other pressure & temperature.



**Notes:**

1. Specifications subject to change.
2. Upon request, reels can be supplied with drum lengths other than shown.
3. For a detailed parts breakdown drawing, request ISO 205.
4. Accessory seperated.
5. When ordering power rewind models, prefix model number with:  
A = Air Rewind  
EP = Electric Rewind (12v and 24v DC)  
HD = Hydraulic Rewind



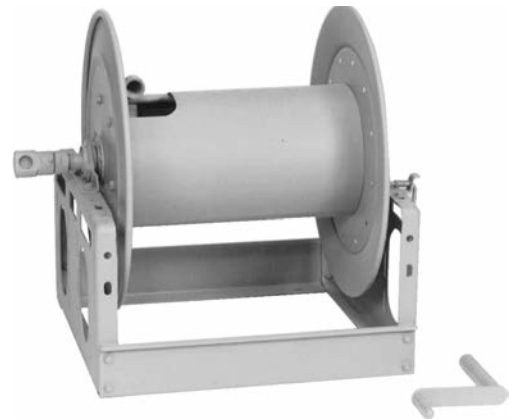
**HRP1470 - Industrial Reel to handle dual 1/4" through 1/2" I.D. hose**

Model Number	Hose Capacity of Reel(m)			Approx. Weight Crank Rewind (kg) NET	Reel Dimensions (mm)				
	I.D. (in)	1/4" 5/8"	3/8" 3/4"		1/2" 7/8"	A	B	F	X
HRP1470		2/23	2/15	2/11	15	330	203	533	292
HRP1471		2/46	2/31	2/15	18	432	305	635	394
HRP1472		2/61	2/46	2/31	19	584	457	787	546

**Manual Rewind Reels**  
*For Fuel Dispensing(Consult H&RP), Spray Operations, Fire Protection*

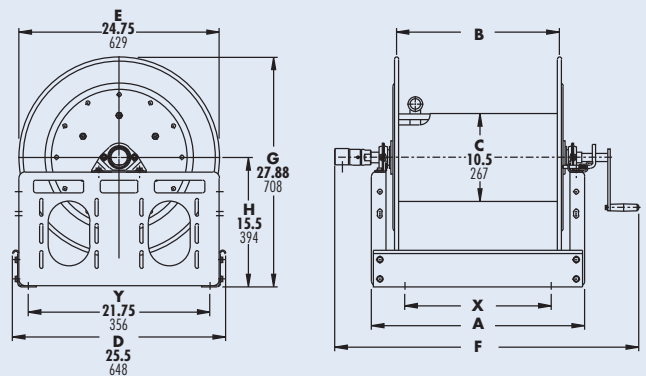
- Economical manual rewind reels for long lengths of hose.
- Choose disc rewind or removable direct crank rewind.
- Supplied with spring-actuated pin lock.
- Standard inlet 90° ball bearing swivel joint 1" female BSPT threads.
- Standard outlet 1" female BSPT thread.
- Optional bronze or aluminum swivel joint and stainless steel hub assembly and riser, are available
- Optional Rollers may be purchased.
- Operate up to 350 bar.
- Temperatures from -51°C to +121°C.
- Consult H&RP for other pressure & temperature.

**HRP 1340**



**Notes:**

1. Specifications subject to change.
2. Upon request, reels can be supplied with drum lengths other than shown and with disc sizes in other diameters.
3. **Power rewind NOT available on these models.**
4. For a detailed parts breakdown drawing, request ISO 113
5. Accessory seperated.



**HRP1340 - Industrial Reel to handle 3/4" or 1" I.D. hose**

Model Number	Hose Capacity of Reel(m)			Approx. Weight Crank Rewind (kg) NET	Reel Dimensions (mm)			
	I.D. (in) O.D. (in)	Round Hose 3/4" 1" 1-9/32" 1-9/16"	Collapsible Hose 1" 1/2"x3/4"		A	B	F	X
HRP1340		30 15	61	39	330	191	603	197
HRP1341		46 30	91	43	432	292	705	229
HRP1342		76 46	122	47	533	394	806	330
HRP1343		91 61	168	51	648	508	921	445

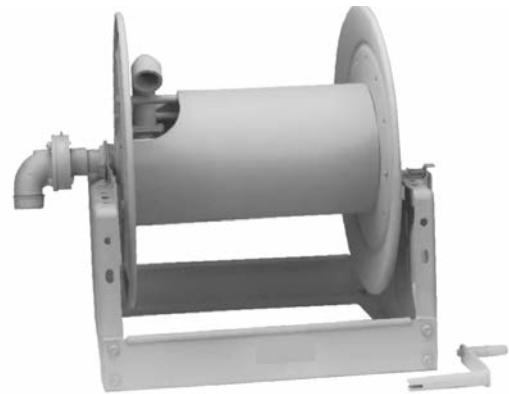


## Manual Rewind Reels

**For Fuel Dispensing(Consult H&RP), Bulk Transfer, Fire Protection**

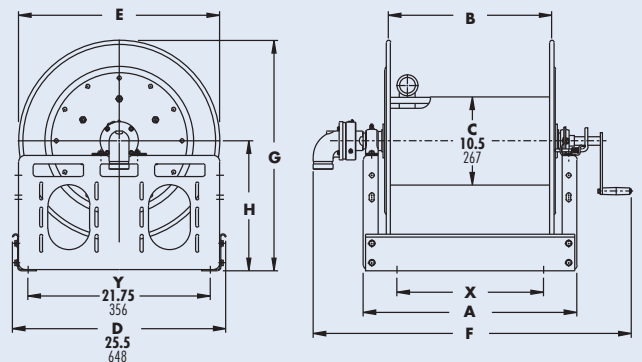
- Economical manual rewind reels for long lengths of hose.
- Choose disc rewind or removable direct crank rewind.
- Supplied with spring-actuated pin lock.
- Standard inlet 90° swivel joint 1-1/2" female BSPT threads and 2" victaulic groove.
- Standard outlet flanged riser with 1-1/2" female BSPT threads.
- Pressures up to 69 bar.
- Temperatures from -40°C to +79°C.

# HRP 1360



### Notes:

1. Specifications subject to change.
2. Upon request, reels can be supplied with drum lengths other than shown and with disc sizes in other diameters.
3. Power rewind **NOT** available on these models.
4. For a detailed parts breakdown drawing, request ISO 111.
5. Accessory seperated.

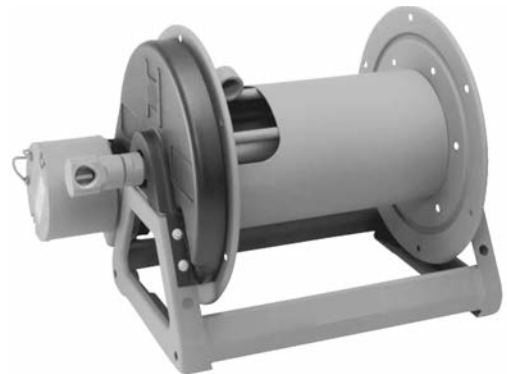


### HRP1360 - Industrial Reel to handle 1" through 1-3/4" I.D. hose

Model Number	Hose Capacity of Reel(m)				Approx. Weight Crank Rewind (kg) NET	Reel Dimensions (mm)						
	I.D. (in) O.D. (in)	1" Round Hose 1-9/16" 2-1/16"	1-1/2" Round Hose 2-1/16"	Collapsible Hose 1-1/2" 1-3/4" 3/4"x3" 7/8"x1/4"		A	B	E	F	G	H	X
HRP1360		30	15	30 23	47	432	292	629	762	708	394	229
HRP1361		61	30	61 46	56	648	508	629	978	708	394	445
HRP1362		61	30	76 46	56	533	394	730	864	759	394	330
HRP1363		76	46	91 76	61	648	508	730	978	759	394	445
HRP1364		107	61	137 107	67	800	660	730	1130	759	394	597
HRP1365		122	76	137 107	63	699	559	806	1029	822	419	495

**Manual or Power Rewind Reels**  
*For Fuel Dispensing(Consult Factory), Fire Protection, Water Supply, Chemical Transfer*

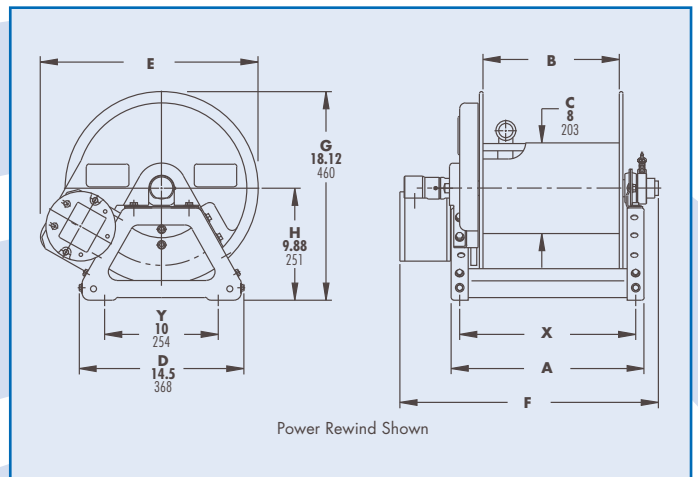
**HRP 1380**



- Lightweight compact reels designed for long lengths of hose in manual and power rewind.
- Direct crank rewind is removable.
- Chain and sprocket drive powered by electric, hydraulic, or compressed air motor.
- Direct crank rewind, adjustable comet brake, spring actuated pin lock.
- Standard inlet 90° ball bearing swivel joint 1" female BSPT threads.
- Standard outlet 1" female BSPT threads.
- Optional Rollers: Specify roller position when ordering.
- Pressures up to 207 bar.
- Temperatures from -51°C to +121°C.
- Consult H&RP for other pressure & temperature.

**Notes:**

1. Specifications subject to change.
2. Upon request, reels can be supplied with drum lengths other than shown.
3. For a detailed parts breakdown drawing, request ISO 68.
4. Accessory seperated.
5. When ordering power rewind models, prefix model number with:  
A = Air Rewind  
EP = Electric Rewind (12v and 24v DC)  
HD = Hydraulic Rewind



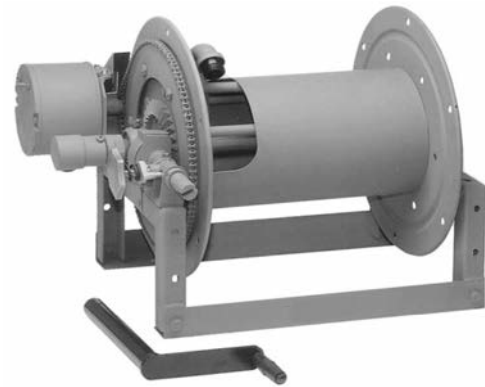
**HRP1380 - Industrial Reel to handle single 3/4" or 1" I.D. hose**

Model Number <i>For Power Rewind see note 5</i>	Hose Capacity of Reel(m)		Approx. Weight Crank Rewind <sup>3</sup> (kg) NET	Reel Dimensions (mm)						
	I.D. (in) O.D. (in)	3/4" 1" 1-9/32" 1-9/16"		A	B	Crank E	Power E	Crank F	Power F	X
HRP1380		15 11	16	381	254	419	483	686	521	343
HRP1381		30 15	21	533	406	419	483	838	673	495
HRP1382		46 23	26	686	559	419	483	991	826	648
HRP1383		61 30	32	889	762	419	483	1194	1029	851

Industrial Reel to handle single 3/4" or 1" I.D. hose

**Manual or Power Rewind Reels**  
*For Fuel Dispensing(Consult Factory), Fire Protection, Water Supply, Chemical Transfer*

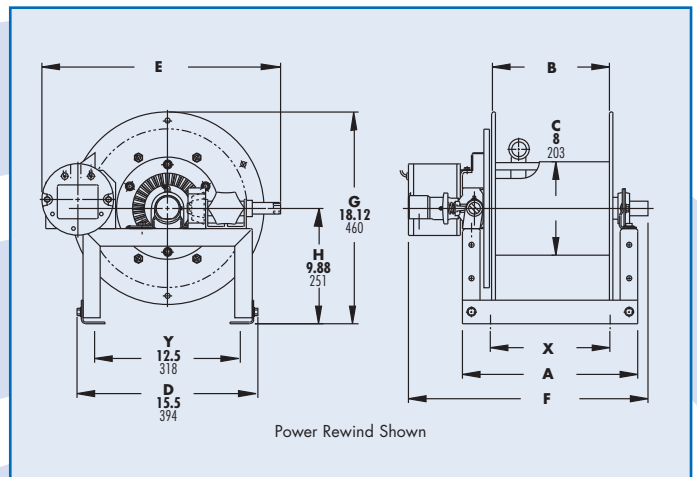
**HRP 1740**



- Lightweight compact reels designed for long lengths of hose in manual and power rewind.
- Gear driven crank rewind handle is removable.
- Chain and sprocket drive powered by electric, hydraulic, or compressed air motor.
- Gear driven crank rewind, adjustable pinion brake, spring actuated pin lock.
- Standard inlet 90° ball bearing swivel joint 1" female BSPT threads.
- Standard outlet 1" female BSPT threads.
- Optional Rollers: Specify roller position when ordering.
- Pressures up to 207 bar.
- Temperatures from -51°C to +121°C.

**Notes:**

1. Specifications subject to change.
2. Upon request, reels can be supplied with drum lengths other than shown.
3. For a detailed parts breakdown drawing, request ISO 206.
4. Accessory seperated.
5. When ordering power rewind models, prefix model number with:  
A = Air Rewind  
EP = Electric Rewind (12v and 24v DC)  
HD = Hydraulic Rewind



**HRP1740 - Industrial Reel to handle single 3/4" or 1" I.D. hose**

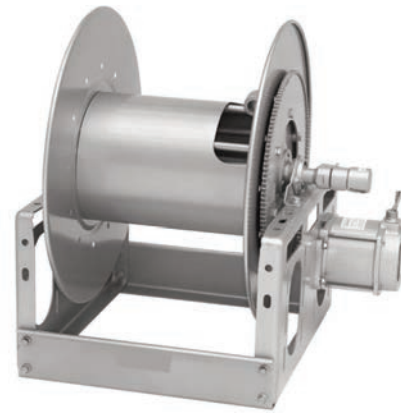
Model Number <i>For Power Rewind see note 5</i>	Hose Capacity of Reel(m)		Approx. Weight Crank Rewind <sup>3</sup> (kg) NET	Reel Dimensions (mm)					
	I.D. (in) O.D. (in)	3/4" 1" 1-9/32" 1-9/16"		A	B	Crank E	Power E	F	X
HRP1740		15 11	28	381	254	457	521	521	190
HRP1741		30 15	33	533	406	457	521	673	343
HRP1742		46 23	38	686	559	457	521	826	495
HRP1743		61 30	44	889	762	457	521	1029	698

Industrial Reel to handle single 3/4" or 1" I.D. hose

**Manual or Power Rewind Reels**  
*For Fuel Dispensing(Consult Factory), Spray Operations, Fire Protection, Water Blasting\*, Sewer Cleaning\**

- Heavy-duty reel for longer lengths of hose.
- Choose Gear-driven crank rewind or chain and sprocket drive powered by an electric, hydraulic or compressed air motor.
- Crank rewind reels supplied with pinion brake, power rewind reels with a comet brake.
- Standard inlet a 90° ball bearing swivel joint 1" female BSPT threads.
- Standard outlet 1" female BSPT threads.
- Optional Rollers may be purchased.
- Pressures up to 350 bar.
- Temperatures from -51°C to +121°C.
- Length between 72-107 m

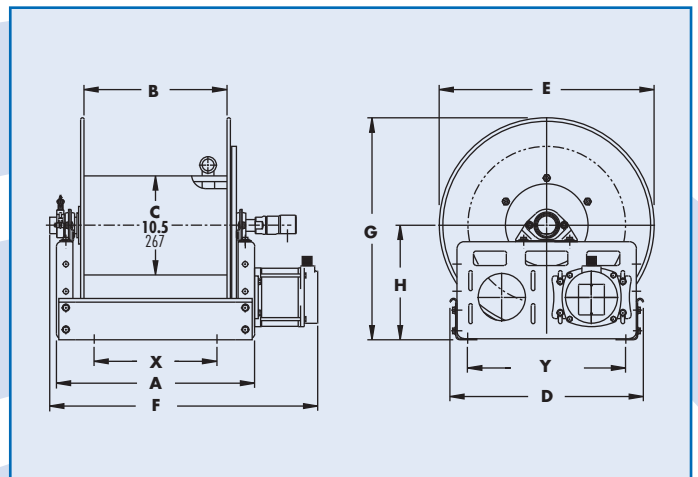
**HRP 1570** ON REQUEST



**Notes:**

1. Specifications subject to change.
2. Upon request, reels can be supplied with drum lengths other than shown and with disc sizes in other diameters.
3. Dimensions shown for reels up to and including 30-31 disc size reflect pressed frames. All others are rollformed channel frames.
4. For a detailed parts breakdown drawing, request ISO 84.
5. Accessory seperated.
6. When ordering power rewind models, prefix model number with:  
A = Air Rewind  
EP = Electric Rewind (12v -115v DC)  
HD = Hydraulic Rewind

**Explosion proof switch, w/EXPB-2A/B**



**HRP1570 - Industrial Reel** to handle single 1/2" through 1" I.D. hose

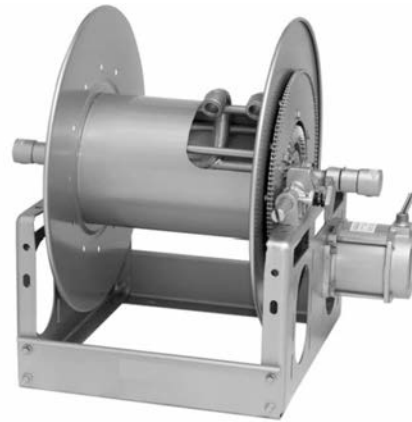
Model Number	Hose Capacity of Reel(m)				Approx. Weight Crank Rewind <sup>3</sup> (kg) NET	Reel Dimensions (mm)						
	I.D. (in)	1/2"	3/4"	1"		A	B	E	E	F	F	X
ON REQUEST	ON REQUEST				ON REQUEST	ON REQUEST						

Industrial Reel to handle single 1/2" through 1" I.D. hose

**Manual or Power Rewind Reels**  
*For Hydraulics, Dual Agents*

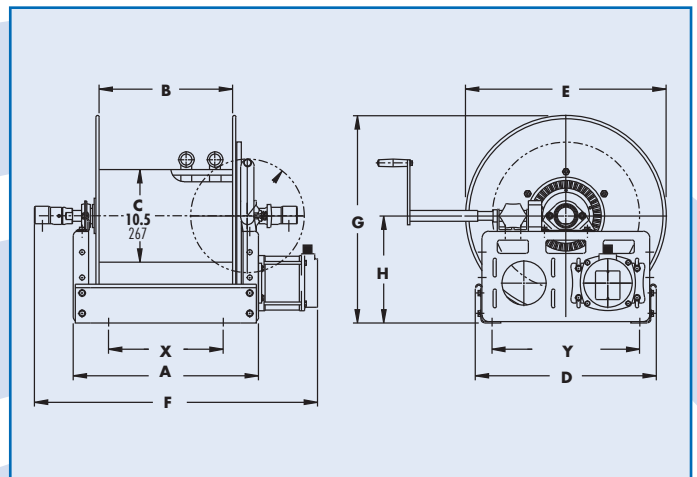
- Two swivel joint inlets and two outlet risers to handle two equal lengths of hose.
- Choose gear-driven crank rewind or chain & sprocket drive powered by an electric, hydraulic or compressed air motor.  
An auxiliary rewind is standard.
- Crank rewind and power rewind reels, pinion brake standard.
- Standard inlets 90° ball bearing swivel joints 1" female BSPT threads.
- Standard outlets 1" female BSPT threads.
- Standard inlet, outlet riser and hub assembly are steel. Optional bronze or aluminum swivel joint and stainless steel hub assembly and riser, are available.
- Pressures up to 350 bar.
- Temperatures from -51° C to +121° C.
- Consult H&RP for other pressure & temperature.

**HRP 1590**



**Notes:**

1. Specifications subject to change.
2. Upon request, reels can be supplied with drum lengths other than shown and with disc sizes in other diameters.
3. For a detailed parts breakdown drawing, request ISO 72.
4. Accessory separated.
5. When ordering power rewind models, prefix model number with:  
A = Air Rewind  
EP = Electric Rewind (12v -115v DC)  
HD = Hydraulic Rewind  
**Explosion proof switch, w/EXPB-2A**



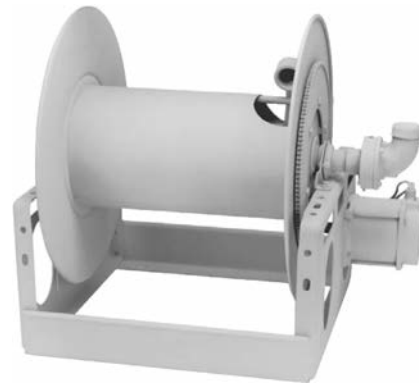
**HRP1590 - Industrial Reel** to handle dual 3/4" or 1" I.D. hose

Model Number <small>For Power Rewind see note 5</small>	Hose Capacity of Reel(m)			Approx. Weight Crank Rewind <sup>4</sup> (kg) NET	Reel Dimensions (mm) Crank Power									
	I.D. (in) O.D. (in)	3/4"	1"		A	B	D	E	F	F	G	H	X	Y
HRP1590		2/18	2/8	45	533	394	521	556	756	816	546	308	330	425
HRP1591		2/27	2/15	48	584	445	521	584	806	867	597	308	381	425
HRP1592		2/12	2/9	43	330	191	648	629	552	613	708	394	197	552
HRP1593		2/53	2/31	59	749	610	648	629	972	1032	708	394	546	552
HRP1594		2/91	2/46	62	749	610	648	730	972	1032	759	394	546	552
HRP1595		2/69	2/35	54	521	394	800	806	756	816	854	451	330	705
HRP1596		2/107	2/61	62	737	610	800	806	972	1032	854	451	546	705

Industrial Reel to handle dual 3/4" or 1" I.D. hose

**Manual or Power Rewind Reels**  
*For Fuel Dispensing(Consult H&RP),Bulk Transfer, Suction/Discharge(Consult H&RP)*

**HRP 1730**

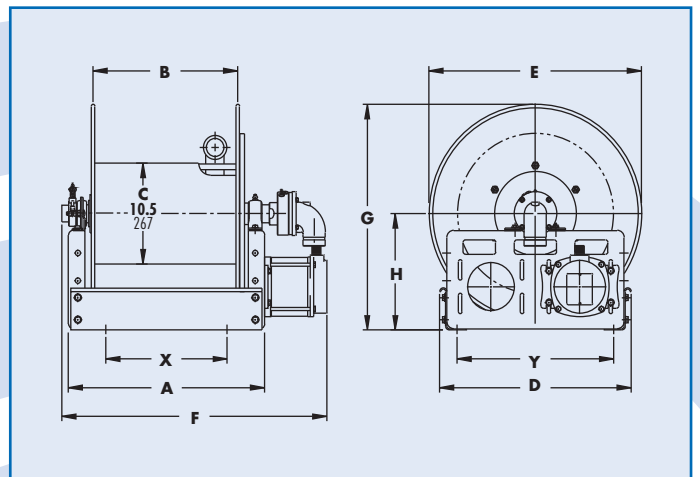


- Heavy-duty reel designed for longer lengths.
- Choose gear-driven crank rewind or chain and sprocket drive powered by an electric, hydraulic or compressed air motor.
- Crank rewind reels supplied with pinion brake and power rewind reels with a comet brake.
- Standard inlet 90° ball bearing swivel joint 1-1/2" female BSPT threads and 2" victaulic groove.
- Standard outlet flanged riser 1-1/2" female BSPT threads.
- Rollers may be purchased as accessory items.
- Operate at pressures up to 69 bar.
- Temperatures from -40°C to +150°C.

**Notes:**

- 1 Specifications subject to change.
2. Upon request, reels can be supplied with drum lengths other than shown and with disc sizes in other diameters.
3. For a detailed parts breakdown drawing, request ISO 18.
4. Accessory seperated.
5. When ordering power rewind models, prefix model number with:  
A = Air Rewind  
EP = Electric Rewind (12v -115v DC)  
HD = Hydraulic Rewind

**Explosion proof switch, w/EXPB-2A**



**HRP1730 - Industrial Reel** to handle single 1" through 1-1/2" I.D. hose

Model Number <small>For Power Rewind see note 5</small>	Hose Capacity of Reel(m)				Approx. Weight Crank Rewind <sup>4</sup> (kg) NET	Reel Dimensions (mm)									
	I.D. (in) O.D. (in)	1" 1-9/16"	1-1/4" 1-13/16"	1-1/2" 2-1/16"		A	B	D	E	F	F	G	H	X	Y
HRP1730		26	21	15	47	648	508	521	476	813	838	546	308	445	425
HRP1731		61	58	30	59	889	749	521	578	1054	1080	597	308	686	425
HRP1732		35	23	15	48	432	292	648	629	597	622	708	394	229	552
HRP1733		61	41	30	56	648	508	648	629	813	838	708	394	445	552
HRP1734		58	49	30	54	483	343	648	730	648	673	759	394	279	552
HRP1735		87	79	49	59	648	508	648	730	813	838	759	394	445	552
HRP1736		102	61	61	60	572	445	800	806	743	768	854	451	381	705

**Manual or Power Rewind Reels**  
*For Bulk Transfer, Chemical Transfer, General Dispensing, Suction/Discharge(consult factory), Fueling Applications*

- Heavy-duty reel designed for longer lengths and larger diameters of hose through 2" I.D.
- Choose gear-driven crank rewind or chain and sprocket drive powered by an electric, hydraulic or compressed air motor.
- Crank rewind reels supplied with a pinion brake, power rewind reels with a comet brake.
- Standard inlet 90° ball bearing swivel joint 2" female BSPT threads.
- Standard outlet flanged riser 2" female BSPT threads
- Rollers may be purchased as accessory items.
- Pressures to 41 bar.
- Temperatures from -40°C to +79°C.
- Length between 24-104 m
- For more information contact Hose & Reel Products

**HRP 1760** ON REQUEST

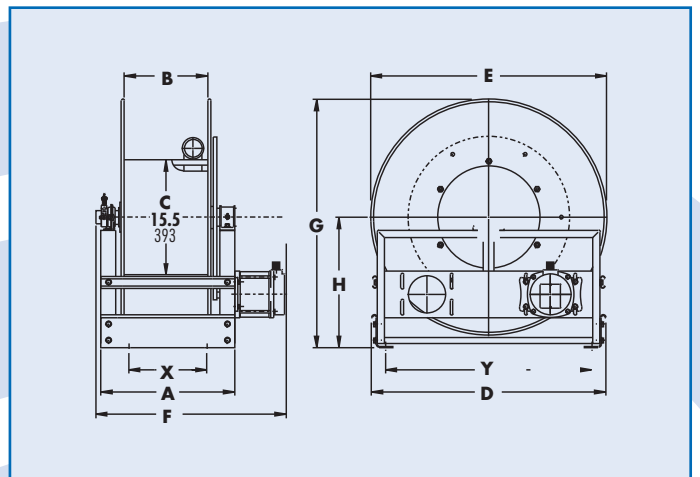


**Notes:**

1. Specifications subject to change.
2. Upon request, reels can be supplied with drum lengths other than shown and with disc sizes in other diameters.
3. For a detailed parts breakdown drawing, request ISO 35.
4. Accessory seperated.
5. When ordering power rewind models, prefix model number with:

- A = Air Rewind
- EP = Electric Rewind (12v -115v DC)
- HD = Hydraulic Rewind

**Explosion proof switch, w/EXPB-2A**



<b>HRP1760 - Industrial Reel</b> to handle single 1-1/2" or 2" I.D. hose														
Model Number <i>For Power Rewind see note 5</i>	Hose Capacity of Reel(m)			Approx. Weight Crank Rewind <sup>3</sup> (kg) NET	Reel Dimensions (mm) Crank Power									
	I.D. (in)	1-1/2"	2		A	B	D	E	F	F	G	H	X	Y
	O.D. (in)	2-1/16"	2-9/16"											
<b>ON REQUEST</b>	<b>ON REQUEST</b>			<b>ON REQUEST</b>	<b>ON REQUEST</b>									

**Industrial Reel** to handle single 1-1/2" or 2" I.D. hose

**Manual or Power Rewind Reels**  
*For Suction/Discharge(consult factory), High Volume Application, Bulk Transfer, Chemical Transfer, Fueling Applications*

**HRP 1770** ON REQUEST



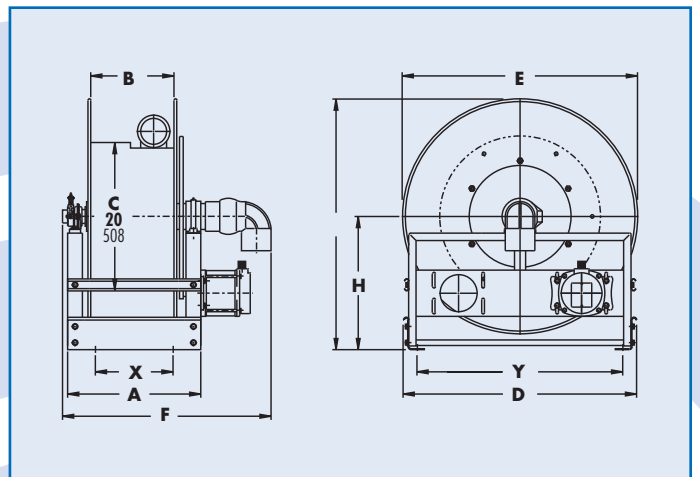
- Heavy-duty reel designed for longer lengths and larger diameters of hose through 3" I.D.
- Choose gear-driven crank rewind or chain and sprocket drive powered by an electric, hydraulic or compressed air motor.
- Crank rewind reels supplied with a pinion brake power rewind reels with a comet brake.
- Standard inlet 90° ball bearing swivel joint 3" female BSPT threads.
- Standard outlet flanged riser 3" female BSPT threads.
- Rollers may be purchased as accessory items.
- Pressures up to 21 bar.
- Temperatures from -29°C to +107° C.
- Length between 21-61 m
- For more information contact Hose & Reel Products

**Notes:**

1. Specifications subject to change.
2. Upon request, reels can be supplied with drum lengths other than shown and with disc sizes in other diameters.
3. For a detailed parts breakdown drawing, request ISO 57.
4. Accessory seperated.
5. When ordering power rewind models, prefix model number with:

- A = Air Rewind
- EP = Electric Rewind (12v -115v DC)
- HD = Hydraulic Rewind

**Explosion proof switch, w/EXPB-2A**



**HRP1770 - Industrial Reel** to handle 2" through 3" I.D. hose

Model Number <i>For Power Rewind see note 5</i>	Hose Capacity of Reel(m)				Approx. Weight Crank Rewind (kg) NET	Reel Dimensions (mm) Crank Power									
	I.D. (in)	2"	2-1/2"	3"		A	B	D	E	F	F	G	H	X	Y
ON REQUEST	ON REQUEST				ON REQUEST	ON REQUEST									

Industrial Reel to handle 2" through 3" I.D. hose



**Portable Hose Reels on Wheels**  
*For Grounds Maintenance, Restaurants/Hotels, Home Use*

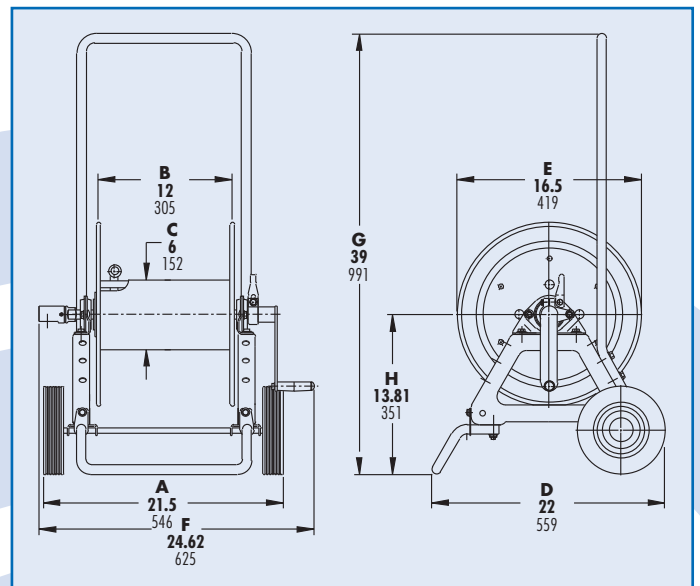
**HRP 1290**

- Continuous flow reels with swivel joint inlet, fluid hub, outlet riser.
- Comes with cam lock brake.
- Direct crank rewind.
- One-piece foot, rubber tires, and removable steel handlebar.
- Permanently attached crank.
- Standard inlet 90° ball bearing swivel joint 1/2" female BSPT threads.
- Standard outlet is 1/2" female BSPT threads.
- Prefix GH to model number when ordering garden hose thread, e.g., HRP1290.
- Pressures up to 207 bar.
- Temperatures from -7°C to +204°C.



**Notes:**

1. Specifications subject to change.
2. For a detailed parts breakdown drawing, request ISO 48.
3. Accessory seperated.



**HRP1290 - Industrial Reel** to handle single 3/8" through 5/8" I.D. hose

Model Number	Hose Capacity of Reel(m)			Approx. Weight (kg) NET	
	I.D. (in)	3/8"	1/2"		5/8"
HRP1290	O.D. (in)	3/4"	7/8"	1"	21

Industrial Reel to handle 3/8" through 5/8" I.D. hose

**Portable Hose Reels on Wheels**  
*For Grounds Maintenance, Restaurants/Hotels, Home Use*

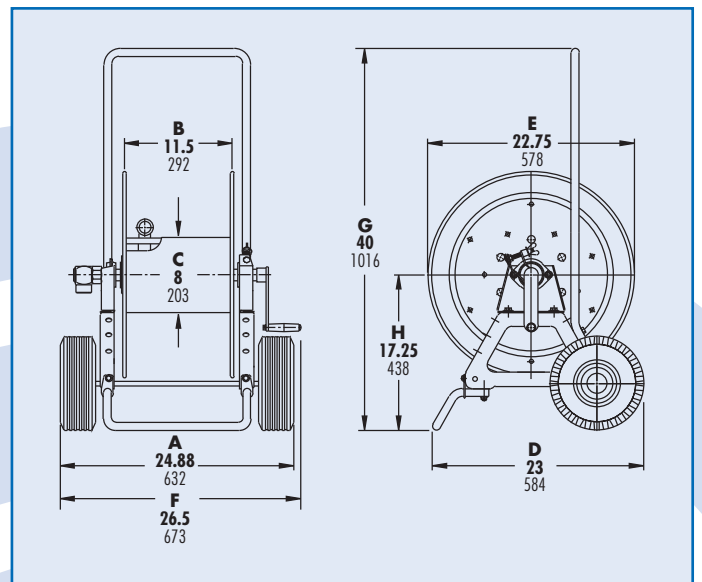
**HRP 1390**

- Continuous flow reels with swivel joint inlet, fluid hub, outlet riser.
- Comes with cam lock brake.
- Direct crank rewind.
- One-piece foot, rubber tires, and removable steel handlebar.
- Permanently attached crank.
- Standard inlet 90° ball bearing swivel joint 1/2" female BSPT threads.
- Standard outlet is 1/2" female BSPT threads.
- Prefix GH to model number when ordering garden hose thread, e.g., HRP1390
- Pressures up to 207 bar.
- Temperatures from -7°C to +204°C.



**Notes:**

1. Specifications subject to change.
2. For a detailed parts breakdown drawing, request ISO 87.
3. Accessory separated.



**HRP1390 - Industrial Reel to handle 1/2" through 1" I.D. hose**

Model Number	Hose Capacity of Reel(m)					Approx. Weight (kg) NET
	I.D. (in)	1/2"	5/8"	3/4"	1"	
HRP1390	O.D. (in)	7/8"	1"	1-9/32"	1-9/16"	39

Industrial Reel to handle 1/2" through 1" I.D. hose

**Manual or Power Rewind Storage Reels**  
*For Storage of Hose, Cable, Rope, Wire*

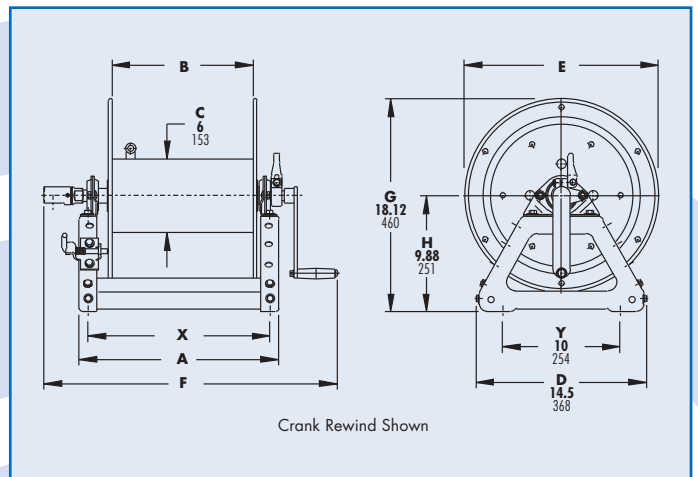
**HRP 1780**

- Reels are designed for storage of long lengths of hose, cable, rope, wire or other materials.
- A 1-1/8" x 2-3/8" (28 mm x 60 mm) opening in the drum to initiate winding.
- Direct crank rewind, permanently attached. Removable crank option is available. Also available chain and sprocket rewind powered by electric, compressed air, or hydraulic motor.
- Supplied with cam lock brake on manual rewind models only.
- Optional divider discs can be placed at almost any point. Be sure to specify spacing of discs on your order.
- Rollers may be purchased as accessory items.
- Length max. 366 meter.



**Notes:**

1. Specifications subject to change.
2. Upon request, reels can be supplied with drum lengths other than shown and with disc sizes in other dimensions.
3. Dimensions reflect pressed frames.
4. For a receive a detailed parts breakdown drawing, request ISO 179.
5. Accessory seperated.
6. When ordering power rewind models, prefix model number with:  
A = Air Rewind  
EP = Electric Rewind (12v -115v DC)  
HD = Hydraulic Rewind



**HRP1780 - Industrial Reel to handle single 1/4" through 1" O.D.**

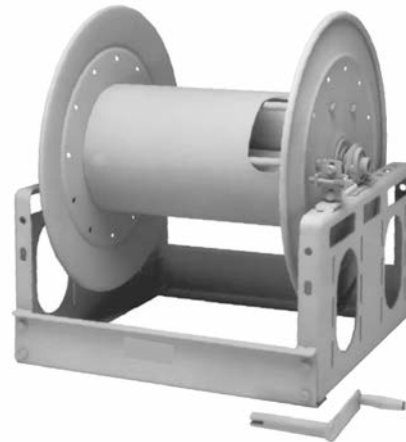
Model Number <small>For Power Rewind see note 6</small>	Hose Capacity of Reel(m)				Approx. Weight Crank Rewind <sup>4</sup> (kg) NET	Reel Dimensions (mm)							
	O.D. (in)	1/4"	1/2"	3/4"		1"	A	B	Crank E	Power E	Crank F	Power F	X
HRP1780		396	99	46	23	10	279	152	419	483	406	400	241
HRP1781		-	198	91	46	11	432	305	419	483	559	552	394
HRP1782		-	305	137	69	12	584	457	419	483	711	705	546
HRP1783		-	366	168	84	13	686	559	419	483	813	806	648

Industrial Reel to handle single 1/4" through 1" O.D.

**Manual Rewind Storage Reels**  
*For Storage of Hose, Cable, Rope, Wire*

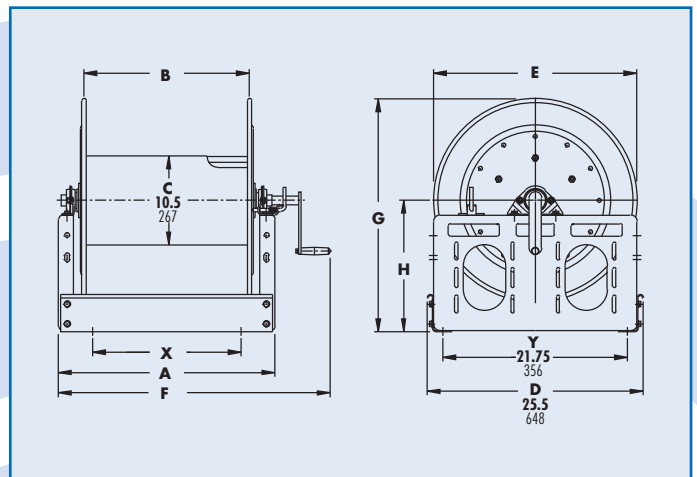
- A 4-1/2" x 9" (114mm x 229mm) opening in the drum to initiate winding.
- Designed for storage of long lengths of hose, cable, rope, wire or other materials.
- Choose disc rewind or removable direct crank rewind.
- Supplied with spring actuated pin lock.
- Optional divider discs can be placed at almost any point.  
Be sure to specify spacing of discs on your order.
- Rollers may be purchased as accessory items.
- Length max. 396 meter.

**HRP 1790**



**Notes:**

1. Specifications subject to change.
2. Upon request, reels can be supplied with drum lengths other than shown and with disc sizes in other dimensions.
3. Dimensions reflect pressed frames.
4. For a detailed parts breakdown drawing, request ISO 117.
5. Series C3200 requires 3-1/2" clearance to remove crank handle.
6. Subtract 5" from 'F' dimension for disc rewind on C3200 Series.
7. Accessory seperated.



**HRP1790 - Industrial Reel to handle single 1/2" through 1-1/2" O.D.**

Model Number	Hose Capacity of Reel(m)					Approx. Weight Crank Rewind (kg) NET	Reel Dimensions (mm)						
	O.D. (in)	1/2"	3/4"	1"	1-1/4"		1-1/2"	A	B	Crank E	Crank F	G	H
HRP1790	305	137	69	38	27	39	381	241	629	559	708	394	178
HRP1791	-	305	152	99	61	49	648	508	629	826	708	394	445
HRP1792	-	396	198	122	84	55	800	660	629	978	708	394	597

Industrial Reel to handle single 1/2" through 1-1/2" O.D.