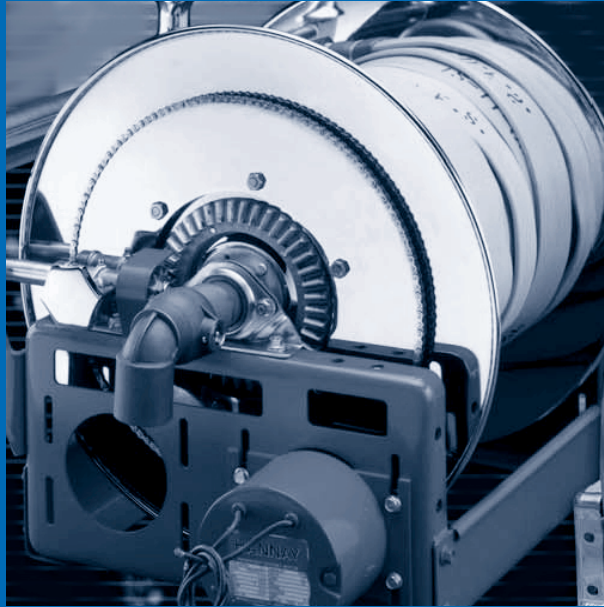




Hose & Reel
P R O D U C T S



Firefighting Reels

Preconnect or Storage • No Draining, Stacking or Dragging
All Sizes and Capacities • Efficient use of Vehicle space • Increased Hose Capacity
Faster Clean-up

Note to the designers & engineers.

Firefighting Reels

With **Hose & Reel Products**, there's no draining, stacking, or dragging. Plus, firefighters appreciate quick attack and fast pick-up. Through research and development of internationally recognized standard models, to custom one-of-a-kind applications, **Hose & Reel Products** continues to meet the specific needs of the vehicle or fire department. Our firefighting reels come in all sizes and capacities and make efficient use of vehicle

space. Numerous options and configurations are readily available to meet your needs. Our firefighting reels come in all sizes and capacities and make efficient use of vehicle space. Numerous options and configurations are readily available to meet your needs. If our catalog does not provide the proper solution do not hesitate to contact our office.

Contents

Reel Type	I.D. Hose Sizes	Page
Compact Reels for Booster Hose		
HRP1820	3/4" - 1"	3
Manual or Power Rewind Reels		
HRP1830	3/4" - 1"	4
For Booster Hose		
HRP1610-1620	3/4" - 1"	5
For Booster Hose – Inboard Mounted Motor		
HRP1840-1850	3/4" - 1"	6
Booster Hose Reels		
Twin Kit		7
Twin Reel Conversion Kit HRP 5100		8
For Dual-Agent Applications		
HRP1700	3/4" - 1-1/2"	9
Industrial Fire protection		
HRP1350	3/4" - 1"	10
HRP1370	1" - 1-3/4"	11
Large Booster Hose or Preconnected Collapsible Hose		
HRP1600	1-1/4" - 1-1/2" (Booster)	12
	1-1/2" - 1-3/4" (Collapsible)	12
Reels and Spools to handle up to 6" I.D. Collapsible Hose		
HRP1810	Up to 6"	13

Compact Reels for Booster Hose

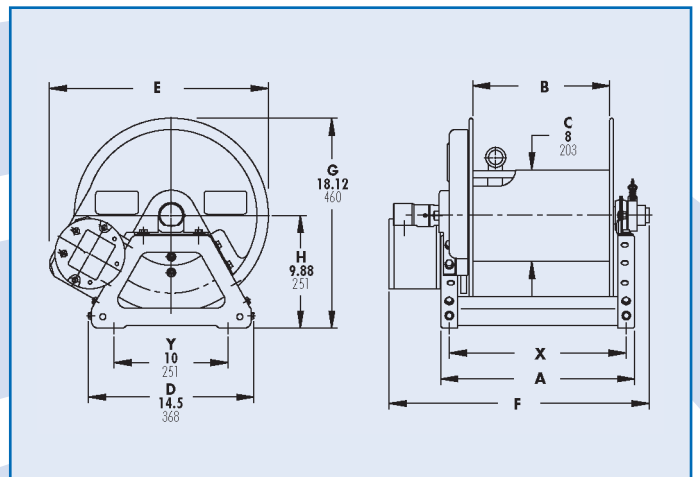
- Choose direct crank rewind (removable) or chain and sprocket drive powered by electric, hydraulic or compressed air motor.
- Power rewind supplied with comet brake.
- Direct crank rewind supplied with cam-lock brake.
- Standard inlet 90° ball bearing swivel joint with 1" female BSP threads.
- Standard outlet 1" male BSP threads.
- Consult factory for other sizes and/or threads.
- Standard inlet, outlet riser and hub assembly are steel (also available in stainless steel).
- Rollers and roller mounting brackets are accessory items.
Specify roller position.
- Pressures up to 69 bar.
- Temperatures from -51°C to +121°C.



Standard Electric Motor Configuration Shown

Notes:

1. Specifications subject to change.
2. Upon request, reels can be supplied with drum lengths other than shown and with disc sizes in other diameters.
3. Dimension "F" is the overall length of standard model reels. On crank rewind models, the dimension shown is with the crank in rewind position. Reels require 3-1/2" clearance to remove crank handle.
4. When ordering power rewind models, prefix number with:
A = Air Rewind
E = Electric Rewind (12v and 24v DC)
HD = Hydraulic Rewind
5. Accessory seperated.



HRP1820 - Firefighting Reels to handle single 3/4" or 1" I.D. hose

Model Number	Hose Capacity of Reel(m)		Approx. Weight Crank Rewind (kg) NET	Reel Dimensions (mm)							
	I.D. (in) O.D. (in)	3/4" 1-9/32"		1" 1-9/16"	A	B	Crank E	Power E	Crank F	Power F	X
HRP1820		30	15	21	533	406	419	483	829	686	495
HRP1821		61	30	32	889	762	419	483	1184	1041	851

Manual or Power Rewind Reels

- Lightweight compact reels designed for long lengths of hose in manual and power rewind.
- Gear driven crank rewind handle is removable.
- Chain and sprocket drive powered by electric, hydraulic, or compressed air motor.
- Gear driven crank rewind, adjustable pinion brake.
- Standard inlet 90° ball bearing swivel joint 1" female BSP threads.
- Standard outlet 1" male BSP threads.
- Optional Rollers: Specify roller position when ordering.
- Pressures up to 207 bar.
- Temperatures from -51°C to +121°C.

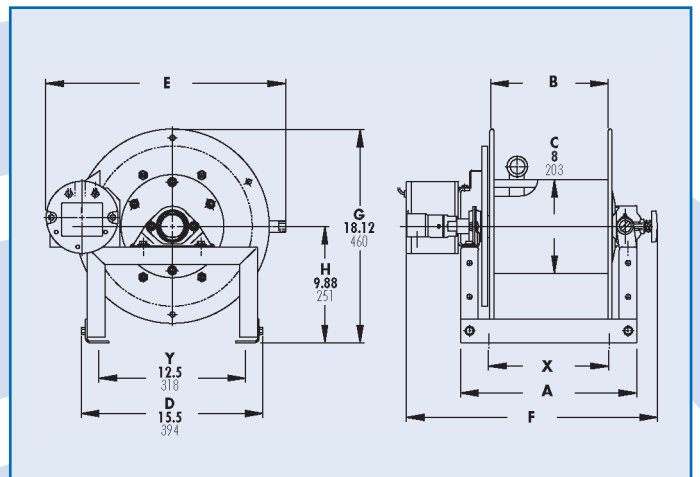
HRP 1830



Electric Rewind Shown
with Gear Driven
Crank Rewind

Notes:

1. Specifications subject to change.
2. Upon request, reels can be supplied with drum lengths other than shown.
3. Dimension "F" is the overall length of standard model reels.
4. When ordering power rewind models, prefix number with:
A = Air Rewind
E = Electric Rewind (12v and 24v DC)
HD = Hydraulic Rewind
5. Accessory seperated.



HRP1830 - Firefighting Reels to handle single 3/4" or 1" I.D. hose

Model Number	Hose Capacity of Reel(m)		Approx. Weight (kg) NET	Reel Dimensions (mm)						
	I.D. (in) O.D. (in)	3/4" 1-9/32"		1" 1-9/16"	A	B	Crank E	Power E	F	X
HRP1830		15	11	28	381	254	457	521	546	190
HRP1831		30	15	33	533	406	457	521	699	343
HRP1832		46	23	38	686	559	457	521	851	495
HRP1833		61	30	44	889	762	457	521	1054	698

For Booster Hose

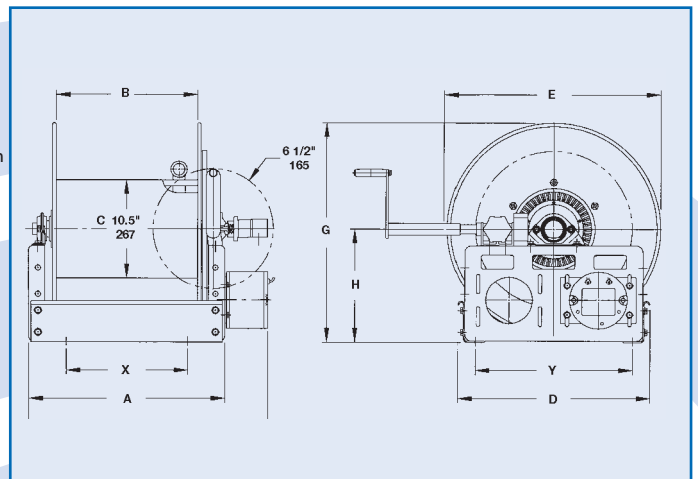
- Painted steel booster hose reel is dependable, rugged.
- "Super Booster" (aluminum construction) reel weighs up to 30% less than standard booster reel. Stainless Steel construction is also available.
- Gear-driven crank rewind is standard. Choose chain and sprocket drive powered by electric, hydraulic or compressed air motor.
- Pinion brake standard.
- Standard inlet 1" 90° ball bearing swivel joint with 1" female BSP threads.
- Standard outlet 1" male BSP threads.
- Consult factory for other sizes and/or threads.
- Standard inlet, outlet riser and hub assembly are steel (also available in stainless steel).
- Rollers and roller mounting brackets are accessory items.
Specify roller position
- Pressures up to 69 bar.
- Temperatures from -51°C to +121°C.

HRP1610-1620



Notes:

1. Specifications subject to change.
2. A two-way flow hub is available at no extra cost and must be specified. Assembly is threaded on both ends so swivel joint can be attached at either end of the reel. A pipe cap seals the opposite end
3. Upon request, reels can be supplied with drum lengths other than shown and with disc sizes in other diameters.
4. When ordering power rewind models, prefix model number with:
E = Electric Rewind (1/3 HP)
EP = Electric Rewind (1/2 HP)
A = Air Rewind, 12v and 24v DC
HD = Hydraulic Rewind
5. Accessory seperated.



HRP1610-1620 - Firefighting Reels to handle 3/4" or 1" I.D. hose

Model Number	Hose Capacity of Reel(m)			Approx.Weight		Reel Dimensions (mm)										
	I.D. (in)	3/4"	1"	Crank Rewind(kg)NET	Steel	Aluminium	A	B	D	E	F	F	G	H	X	Y
HRP1610		46	30	46	36		749	610	521	549	870	873	546	308	546	425
HRP1611		46	30	42	34		533	394	521	584	654	657	597	308	330	425
HRP1612		76	46	48	37		699	559	521	584	819	822	597	308	495	425
HRP1613		107	61	54	42		889	749	521	584	1010	1060	597	308	686	425
HRP1614		91	61	51	39		648	508	648	629	768	819	708	394	445	552
HRP1615		122	76	57	42		800	660	648	629	921	972	708	394	597	552
HRP1616		61	30	45	36		343	203	648	730	464	467	759	394	140	552
HRP1617		76	46	49	38		432	292	648	730	552	556	759	394	229	552
HRP1618		122	61	51	39		533	394	648	730	654	705	759	394	330	552
HRP1619		152	76	55	41		648	508	648	730	768	819	759	394	445	552
HRP1620		168	91	57	42		699	559	648	730	819	870	759	394	495	552

Firefighting Reels to handle 3/4" or 1" I.D. hose

For Booster Hose - Inboard Mounted Motor

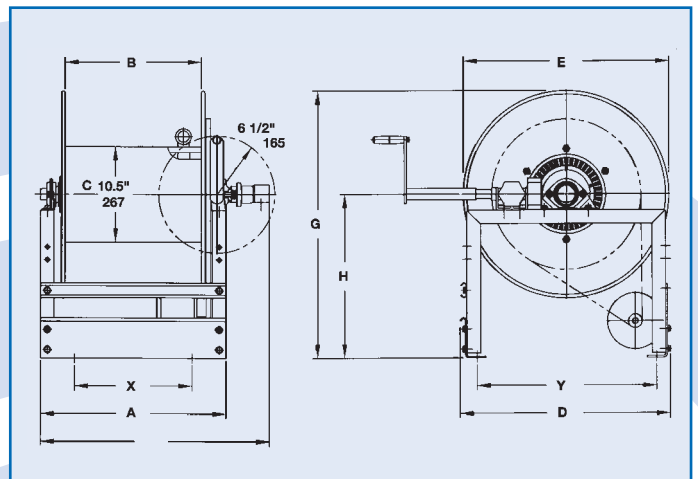
HRP1840-1850

- Inboard motor location high profile
- All models are available in aluminum or stainless steel construction.
- Gear-driven crank rewind is standard. Choose chain and sprocket drive powered by electric, hydraulic or compressed air motor.
- Pinion brake standard.
- Standard inlet 1" 90° ball bearing swivel joint with 1" female BSP threads.
- Standard outlet 1" male BSP threads.
- Standard inlet, outlet riser and hub assembly are steel (also available in stainless steel).
- Rollers and roller mounting brackets are accessory items.
Specify roller position.
- Pressures up to 69 bar.
- Temperatures from -51°C to +121°C.



Notes:

1. Specifications subject to change.
2. A two-way flow hub is available at no extra cost and must be specified. Assembly is threaded on both ends so swivel joint can be attached at either end of the reel. A pipe cap seals the opposite end
3. Upon request, reels can be supplied with drum lengths other than shown and with disc sizes in other diameters.
4. When ordering power rewind models, prefix model number with:
E = Electric Rewind (1/3 HP)
EP = Electric Rewind (1/2 HP)
A = Air Rewind, 12v and 24v DC
HD = Hydraulic Rewind
5. Accessory seperated.



HRP1840-1850 - Firefighting Reels to handle 3/4" or 1" I.D. hose

Model Number	Hose Capacity of Reel(m)			Approx. Weight		Reel Dimensions (mm)									
	I.D. (in)	3/4" O.D. (in)	1" O.D. (in)	Crank Rewind(kg)	NET Aluminium	A	B	D	E	F	G	H	X	Y	
HRP1840		46	30	46	36	737	610	521	549	864	638	400	546	425	
HRP1841		46	30	42	34	521	394	597	584	648	743	454	330	502	
HRP1842		76	46	48	37	686	559	597	584	813	743	454	495	502	
HRP1843		91	61	51	39	635	508	648	629	762	784	470	445	552	
HRP1844		122	76	57	42	787	660	648	629	914	784	470	597	552	
HRP1845		61	30	45	36	330	203	737	730	457	905	540	140	641	
HRP1846		76	46	49	38	419	292	737	730	546	905	540	229	641	
HRP1847		122	61	51	39	521	394	737	730	648	905	540	330	641	
HRP1848		152	76	55	41	635	508	737	730	762	905	540	445	641	
HRP1849		168	91	57	42	686	559	737	730	813	905	540	495	641	
HRP1850		198	107	61	44	787	660	737	730	914	905	540	597	641	

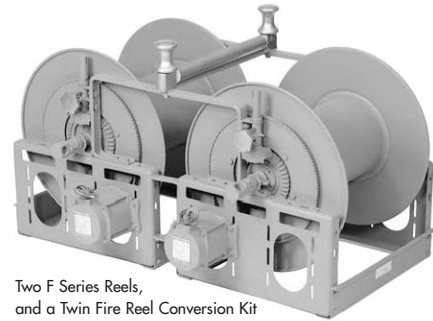
Firefighting Reels to handle 3/4" or 1" I.D. hose

Booster Hose Reels

Series 1690-1600

- Twin booster hose reels combine matched HRP1690 or HRP1600 Series reels in a single unit with a center-mounted roller and spool assembly.
- Hose from both reels can be used on either side of the truck.
- Rugged unit frame construction maintains alignment and simplifies installation when two reels are combined. All models are also available as Super Booster reel with aluminum and plated components as described on model HRP1690 and HRP1600.

Twin Kit

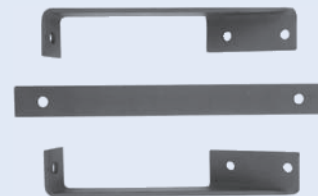
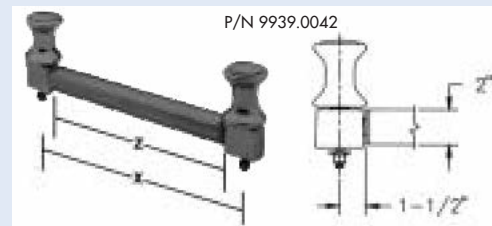


Two F Series Reels,
and a Twin Fire Reel Conversion Kit

FH-3 Roller and Spool Assembly

Not recommended for hoses larger than 1-1/2" I.D.

- Speeds handling and reduces hose wear.
- Buffed stainless steel rollers resist corrosion, pitting and abrasion. Polished, chrome-plated spools and blocks add lasting beauty to your equipment. Delrin bearing surfaces provide for quiet operation and minimum wear.
- Assembly can be factory-installed, when specified, or ordered for field installation on reels or other equipment.
- To order: For factory installation, specify FH-3 Assembly and indicate position on reel. As a component, the complete model number of the reel must be specified.



FH-3 Top Wind Outrigger
Mounting Brackets
P/N 9941.0023

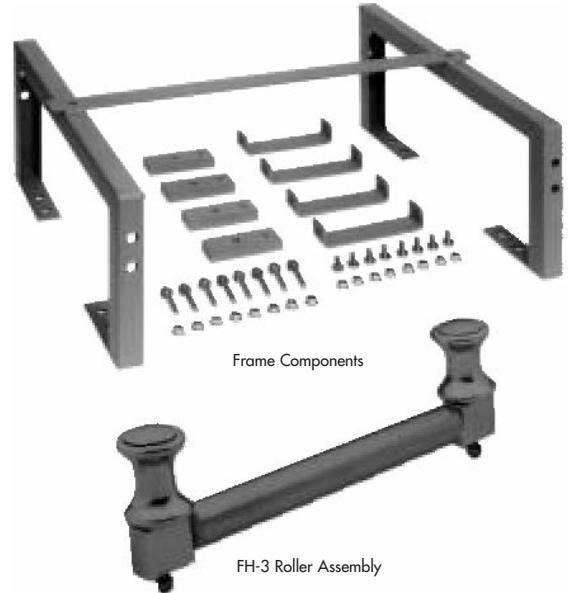
Dimensions of Twin Kit for HRP1610 Series Reels:

Dimension for models ending with	E	J
23-24	48.5"	28.0"
25-26	52.5"	31.38"
30-31	60.5"	31.38"
33-34	66.5"	33.75"

Options:

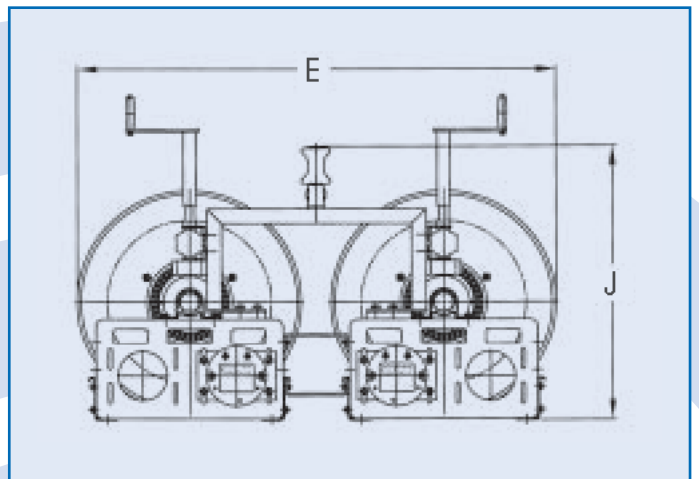
(model must be specified)
 For additional outrigger option (see lower photo top of previous page 7): you will need 2 - 9939.0042 FH-3 Roller & Spool assemblies, and 2 - 9941.0023 FH-3 Top Wind Outrigger Mounting Brackets.
 Assembly can be factory-installed, when specified, or ordered for field installation on reels or other equipment.

Twin Reel HRP5100 Conversion Kit



Notes:

1. Requires strap style bearing.



Twin Reel HRP5100 Conversion Kit	
<i>Part number</i>	<i>Description</i>
Steel Reels	
HRP5100	Conversion Kit for Twin Fire Reel w/FH3 Roller Assembly for small steel pressed frame (23-24 and smaller)
HRP5101	Conversion Kit for Twin Fire Reel w/FH3 Roller Assembly for large steel pressed frame (25-26 and larger)
HRP5102	Conversion Kit for Twin Fire Reel w/FH3 Roller Assembly for 33-34 steel roll-formed frame
Super Booster Reels	
HRP5103	Conversion Kit for Twin Fire Reel w/FH3 Roller Assembly for small aluminum pressed frame (23-24 and smaller)
HRP5104	Conversion Kit for Twin Fire Reel w/FH3 Roller Assembly for large aluminum pressed frame (25-26 and larger)
HRP5105	Conversion Kit for Twin Fire Reel w/FH3 Roller Assembly for 33-34 aluminum square tubing frame

For Dual-Agent Applications

- Two swivel joint inlets and two outlet risers.
- All models are available with optional aluminum or stainless steel construction.
- Gear-driven crank rewind is standard. Choose chain and sprocket drive powered by electric, hydraulic or compressed air motor.
- Pinion brake standard.
- Standard inlet, outlet riser and hub assembly are steel (also available in stainless steel).
- Rollers and roller mounting brackets are accessory items. Specify roller position.

Series 1720-1713

- Standard inlets are 1" 90° ball bearing swivel joints with 1" female BSP threads.
- Standard outlets are 1" male BSP threads.
- Pressures to up 69 bar.
- Temperatures from -51°C to +121°C.

Series 1724-1725-1726

- Standard inlets are 1-1/2" 90° ball bearing swivel joints with 1-1/2" female BSP threads and 2" victaulic groove.
- Standard outlets are 1-1/2" male BSP threads.
- Pressures to 41 bar.
- Temperatures from -29°C to +107°C.

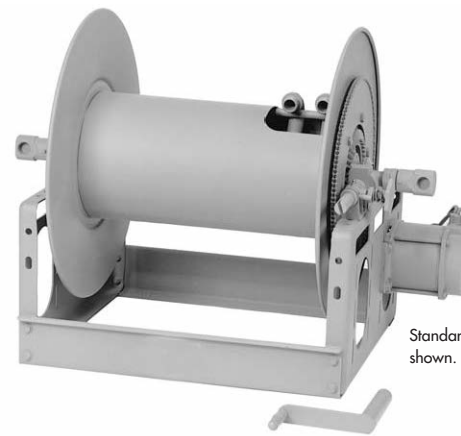
Both Series

- Consult HRP for other sizes and/or threads.
- Consult HRP for other pressures and temperatures.

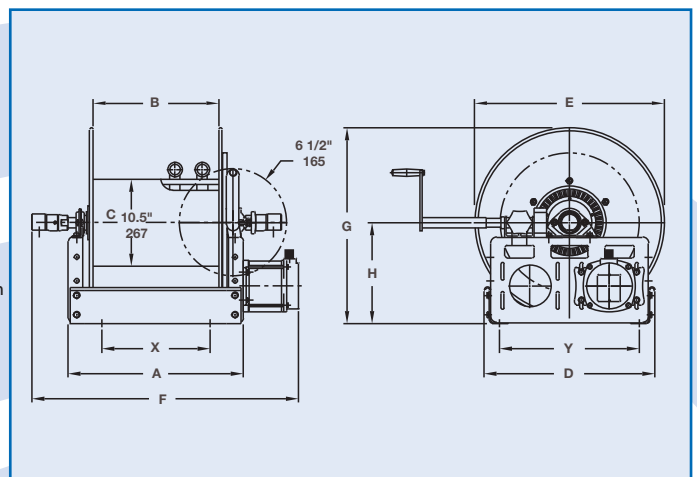
Notes:

1. Specifications subject to change.
2. Upon request, reels can be supplied with drum lengths other than shown and with disc sizes in other diameters.
3. When ordering power rewind models prefix model number with:
EP = Electric Rewind (1/2 HP)
A = Air Rewind, 12v and 24v DC
HD = Hydraulic Rewind
4. Accessory seperated.

HRP 1720



Standard Configuration shown.



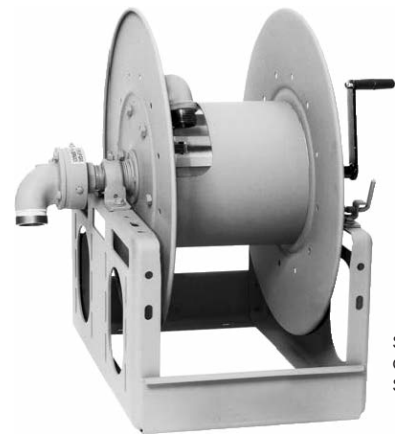
HRP1720 - Firefighting Reels to handle dual 3/4" through 1-1/2" I.D. Hose

Model Number	Hose Capacity of Reel(m)			Approx. Weight Crank Rewind (kg) NET	Reel Dimensions (mm)										
	I.D. (in) O.D. (in)	3/4" 1-9/32"	1" 1-9/16"		1-1/2" 2-1/16"	A	B	D	E	F	F	G	H	X	Y
HRP1720		2/31	2/15	-	49	648	508	521	584	889	940	597	308	445	425
HRP1721		2/46	2/31	-	57	699	559	648	629	940	991	708	394	495	552
HRP1722		2/61	2/38	-	59	648	508	648	730	889	940	759	394	445	552
HRP1723		2/76	2/46	-	59	635	508	800	806	876	927	854	451	445	705
HRP1724		-	-	2/15	65	699	559	648	629	1029	1035	708	394	495	552
HRP1725		-	-	2/15	67	648	508	648	730	978	984	759	394	445	552
HRP1726		-	-	2/31	73	686	559	800	806	1029	1029	854	451	483	705

Industrial Fire protection

- The reel can be installed on the floor or wall.
- Steel construction is standard. Aluminum or stainless steel construction is available.
- Choose disc rewind or removable direct crank rewind.
- Supplied with spring actuated pinlock.
- Standard inlet, outlet riser and hub assembly are steel (also available in stainless steel).
- Rollers and roller mounting brackets are accessory items.
Specify roller position.
- Standard inlet 1" 90° ball bearing swivel joint with 1" female BSP threads.
- Standard outlet 1" male BSP thread
- Pressures up to 69 bar.
- Temperatures from -51°C to +121°C.

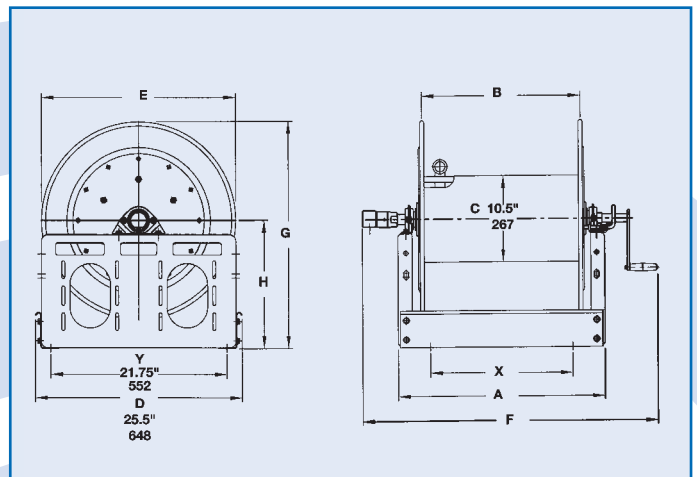
HRP 1350



Standard Configuration Shown

Notes:

1. Specifications subject to change.
2. Upon request, reels can be supplied with drum lengths other than shown and with disc sizes in other diameters.
3. **Power rewind are not available on these models. See Series HRP1610 or HRP1600.**
4. 4" clearance needed for crank handle removal.
5. Accessory seperated.



HRP1350 - Firefighting Reels to handle 3/4" through 1" I.D. hose

Model Number	Hose Capacity of Reel(m)			Approx. Weight Crank Rewind (kg) NET	Reel Dimensions (mm)								
	I.D. (in) O.D. (in)	3/4" 1-9/32"	1" 1-9/16"		1" 1/2"x3/4"	A	B	D	E	F	G	H	X
		round hose		collapsible h.									
HRP1350		30	15	61	39	330	191	648	610	629	708	394	127
HRP1351		46	30	107	43	432	292	648	610	730	708	394	229
HRP1352		76	46	137	47	533	394	648	610	832	708	394	330
HRP1353		91	61	198	51	648	508	648	610	832	708	394	445

Industrial Fire protection

HRP 1370

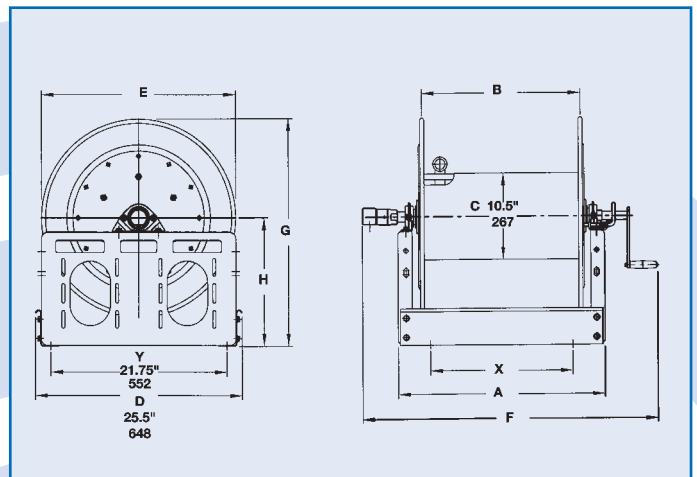
- The reel can be installed on the floor or wall.
- Steel construction is standard. Aluminum or stainless steel construction is available.
- Choose disc rewind or removable direct crank rewind.
- Supplied with spring actuated pinlock.
- Standard inlet, outlet riser and hub assembly are steel (also available in stainless steel).
- Rollers and roller mounting brackets are accessory items.
Specify roller position.
- Standard inlet 1-1/2" 90° ball bearing swivel joint with 1-1/2" female BSP threads and 2" victaulic groove.
- Standard outlet 1-1/2" male NST threads.
- Pressures up to 41 bar.
- Temperatures from -29°C to +107°C.



Removable crank
3600 series shown.

Notes:

1. Specifications subject to change.
2. Upon request, reels can be supplied with drum lengths other than shown and with disc sizes in other diameters.
3. **Power rewind are not available on these models.**
See Series HRP1610 or HRP1600.
4. 4" clearance needed for crank handle removal.
5. Accessory seperated.

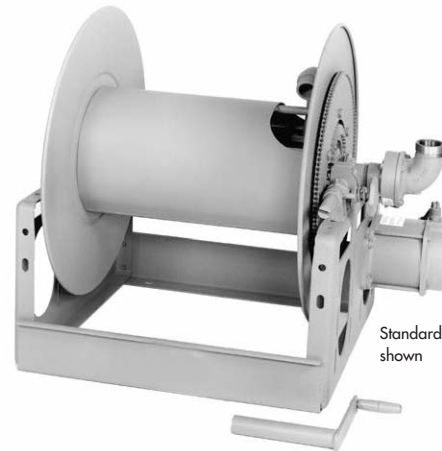


HRP1370 - Firefighting Reels to handle 1" through 1-3/4" I.D. Hose														
Model Number	Hose Capacity of Reel(m)				Approx. Weight Crank Rewind (kg) NET	Reel Dimensions (mm)								
	I.D. (in)	1"	1-1/2"	1-1/2" 3/4"x3"		1-3/4" 7/8"x1/4"	A	B	D	E	F	G	H	X
	O.D. (in)	1-9/32"	2-1/16"											
		round hose		collapsible hose										
HRP1370		15	-	15	15	43	330	191	648	610	660	708	394	127
HRP1371		30	15	30	23	47	432	292	648	610	762	708	394	229
HRP1372		46	23	46	30	51	533	394	648	610	864	708	394	330
HRP1373		61	30	61	46	56	648	508	648	610	978	708	394	445
HRP1374		61	30	76	46	56	533	394	648	762	864	772	406	330
HRP1375		84	46	91	76	61	648	508	648	762	978	772	406	445
HRP1376		114	61	122	107	67	800	660	648	762	1130	772	406	597
HRP1377		122	76	137	107	63	699	559	648	806	1029	822	419	495

Large Booster Hose or Preconnected Collapsible Hose

- Accommodate large diameter booster hose or preconnected collapsible hose.
- Flanged outlet riser.
- All models are available in aluminum or stainless steel construction.
- Gear-driven crank rewind is standard. Choose chain and sprocket drive powered by electric, hydraulic or compressed air motor.
- Pinion brake standard.
- Standard inlet 1-1/2" 90° ball bearing swivel joint with 1-1/2" female BSP threads and 2" victaulic groove.
- Standard outlet 1-1/2" male BSP threads.
- Standard inlet, outlet riser and hub assembly are steel (also available in stainless steel).
- Rollers and roller mounting brackets are accessory items. Specify roller position.
- Pressures up to 41 bar.
- Temperatures from -29°C to +107°C.

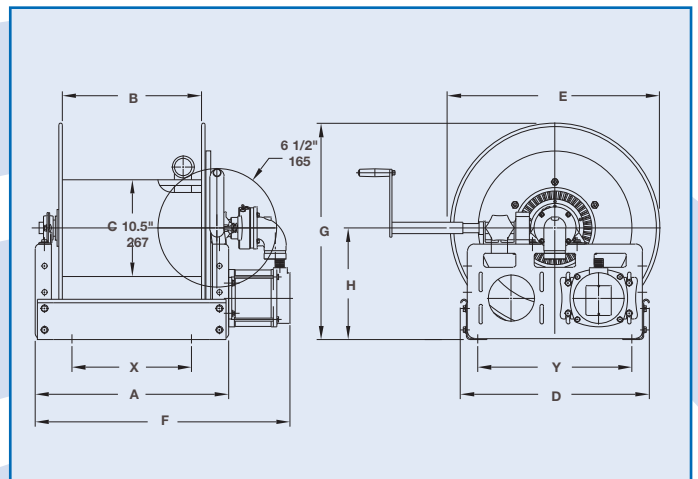
HRP1600



Standard configuration shown

Notes:

1. Specifications subject to change.
2. When ordering power rewind models, prefix model number with:
EP = Electric Rewind (1/2 HP)
A = Air Rewind
HD = Hydraulic Rewind
3. Accessory seperated.



HRP1600 - Firefighting Reels to handle 1-1/4" or 1-1/2" I.D. booster hose or 1-1/2" or 1-3/4" I.D. collapsible hose

Model Number	Hose Capacity of Reel(m)				Approx. Weight		Reel Dimensions (mm)									
	I.D. (in)	1-1/4"	1-1/2"	1-1/2"	1-3/4"	Crank Rewind(kg)NET	A	B	D	E	F	G	H	X	Y	
	O.D. (in)	1-13/16"	2-1/16"	3/4"x3"	7/8"x1/4"											Steel
		round hose		collapsible hose												
HRP1600		30	15	46	38	50	36	648	508	521	584	819	579	308	445	425
HRP1601		30	30	61	53	56	41	648	508	648	629	819	708	394	445	552
HRP1602		23	15	30	23	50	38	330	191	648	730	502	759	394	127	552
HRP1603		30	23	46	23	52	39	381	241	648	730	552	759	394	178	552
HRP1604		76	46	91	76	59	42	648	508	648	730	819	759	394	445	552
HRP1605		38	30	61	46	54	40	419	292	800	806	591	854	451	229	705
HRP1606		46	46	76	61	57	41	470	343	800	806	641	854	451	279	705

Reels and Spools to handle up to 6" I.D. Collapsible Hose

- Square tubing frames.
- Heavy gauge steel discs.
- Drums are formed by reinforced tie rods with radial supports.
- Pillow block ball bearings.
- Chain & sprocket rewind with electric (12 or 24V) or hydraulic rewind motor.
- Hydraulic caliper disc brake.

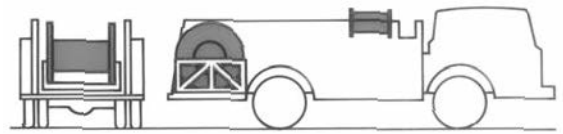
Hydraulic Requirements

- It is important that the End user provide the O.E.M. with complete specifications as to the required operation of the large diameter reel being specified. Any speed and torque requirements **MUST** be known to properly specify the correct reel for the application.
- Hose & Reel Products does not recommend specific brands for hydraulic system components. We suggest you work with your hydraulic component supplier to meet your specs.

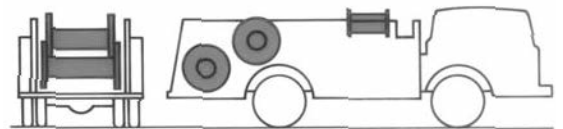
Custom Reels

- The standard models listed represent the most frequently specified customer requirements for handling large diameter fire hose. Because of the many possible variations in reel installation and hose capacity requirements, we will also custom build reels and spools to your specifications to become an integral part of the apparatus. Reels are built of steel construction, and various finishes are available.

HRP 1810



Single large-capacity reel installed in the hose bed area to handle long lengths of pre-coupled hose. Hose pays out from the top of the reel so gravity assists unwinding.



Two reels installed in the hose bed. In this arrangement, the upper reel is unloaded only if necessary. Payout and rewinding of the upper reels are facilitated by the position of the lower reel. Two reels with larger-diameter discs and narrower drums can also be installed side-by-side in the rear of the hose bed to handle approximately the same amount of hose. This method allows a center walkway or paying out two lines simultaneously if required.

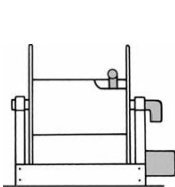
Consult H&RP for complete specifications on a LD reel to meet your requirements.

Important:

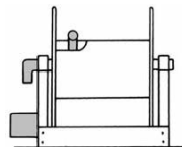
Hose capacity is based on the flat hose dimensions listed below, with couplings at 100 foot intervals.

Optional Location of Components

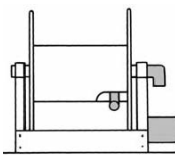
Location of the inlet, outlet riser and rewind mechanism can be varied to meet your requirements and must be specified on your order. The drawings below show the component locations. Unless otherwise specified, most reels will be shipped as Right Top Rewind with the inlet, outlet riser and rewind mechanism on the operator's right.



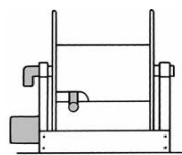
Right Top Rewind (RT)
reels have the inlet, outlet riser and rewind mechanism on the operator's right. Hose unwinds from the top of the reel.



Left Top Rewind (LT)
reels have the inlet, outlet riser and rewind mechanism on the operator's left. Hose unwinds from the top of the reel.



Right Bottom Rewind (RB)
reels have the inlet, outlet riser and rewind mechanism on the operator's right. Hose unwinds from the bottom of the reel.

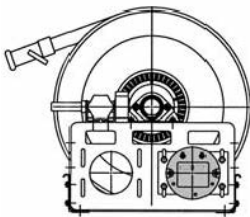


Left Bottom Rewind (LB)
reels have the inlet, outlet riser and rewind mechanism on the operator's left. Hose unwinds from the bottom of the reel.

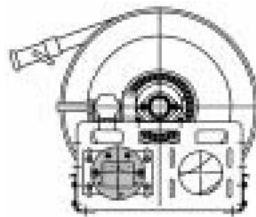
Note: Use position initials as suffix after model number, ie: EF32-23-24-RT

Optional Motor Locations

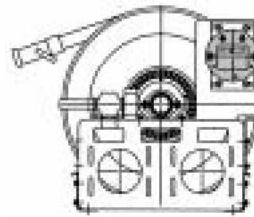
Electric rewind motors can be installed in any of the positions shown in these drawings. The Bottom Rear position is standard. The motor is installed inside the frame on Model ESF reels, which are designed for installation in restricted space.



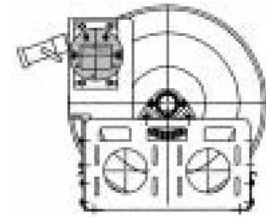
Bottom Rear
(Standard)



Bottom Front



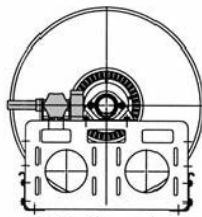
Elevated 2 o'clock



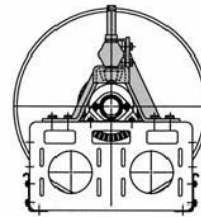
Elevated 10 o'clock

Optional Auxiliary Rewind Positions

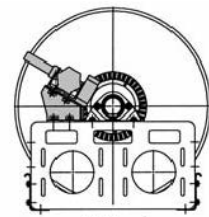
Horizontal ring and pinion gear crank rewind mechanism is the standard configuration. Optional positions include vertical and 30° above centerline, as shown in these drawings. Both are available at extra cost and must be specified.



Horizontal
(Standard)



Vertical



30° Angle

Optional Roller Positions

Optional roller assembly mounting kits, up to 2 of either can be mounted per reel. Consult factory, and indicate installation location – front or rear of reel.

