



Aviation Reels

Refueling • Airport Hydrant Fueling Operations
Sensing • Static Grounding

Note to the designers & engineers.

Aviation Reels

The reels shown in this catalog are the standard of the industry. These models reflect various installation and performance requirements. The high quality of our standard steel construction is only the beginning.

Hose & Reel Products offers any size configuration to fit a defined space, and we construct many models of reels of aluminum or stainless steel. Specifically, we use 5000 and 6000 series aluminum and 304 stainless steel in the manufacture of frames, discs, drums and internals as well as other structural components. This type of construction eliminates the need for maintenance repainting and part replacement due to rust or corrosion.

Please note: Jet fuels require non-ferrous internal piping. Hose & Reel Products offers aluminum or stainless steel internals for 1" to 4" I.D. hose reels.

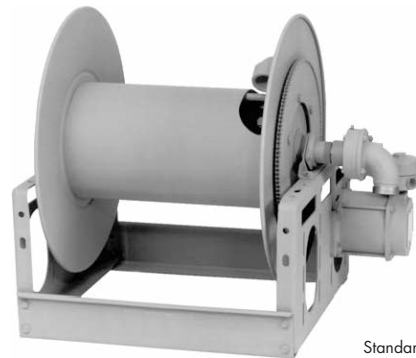
Contents

Reel Type	I.D. Hose Sizes	Page
Manual or Power Rewind Reels		
HRP1520	1" - 1-1/2"	3
HRP1540	1-1/2" - 2"	4
HRP1550	2" - 3"	5
HRP1560	3" - 4"	6
Single Wrap Power Rewind Reels		
HRP1580	1-1/2" - 3"	7

Manual or Power Rewind reels

- A strong, heavy-duty reel.
- Gear-driven crank rewind or chain and sprocket drive powered by an electric, hydraulic or compressed air motor.
- Optional auxiliary crank rewind for power rewind reels.
- Crank rewind reels supplied with pinion brake and power rewind reels with a comet brake.
- 90° ball bearing swivel joint with 1-1/2" female BSP threads and 2" victaulic groove.
- Flanged riser with 1-1/2" female BSPs threads.
- Standard inlet, outlet riser, hub assembly are aluminum for jet fuels.
- Rollers and roller mounting brackets are accessory items. Specify roller position.
- Pressures up to 41 bar.
- Temperatures from -40°C to +79°C.
- Consult factory for other pressures & temps.

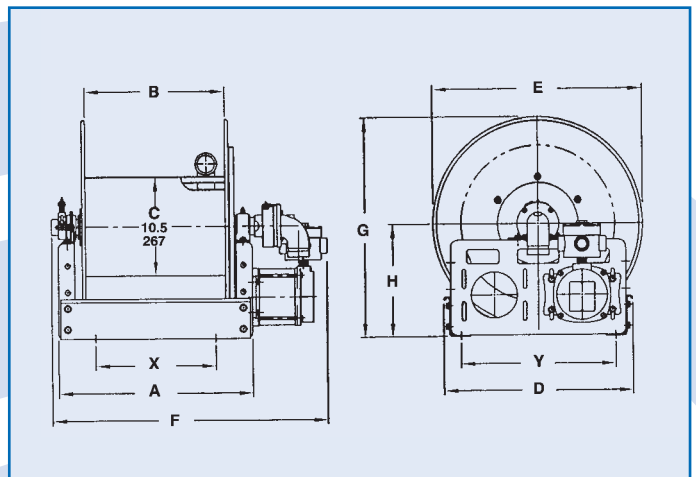
HRP1520-1530



Standard configuration shown

Notes:

1. Specifications subject to change.
2. Upon request, reels can be supplied with drum lengths other than shown and with disc sizes in other diameters.
3. When ordering power rewind models, prefix model number with:
 A = Air Rewind—Supplied with control valve and hose.
 EPJ = Explosion Proof Electric Rewind (1/2 HP)—Supplied with explosion proof switch, solenoid, and junction box.
 HD = Hydraulic Rewind—Not supplied with control valve.
4. Accessory seperated.



HRP1520-1530 - Aviation Reels to handle single 1" through 1-1/2" I.D. hose

Model Number	Hose Capacity of Reel(m)				Approx. Weight Crank Rewind (kg) NET	Reel Dimensions (mm)										
	I.D. (in) O.D. (in)	1"	1-1/4"	1-3/8"		1-1/2"	A	B	C	D	E	F	G	H	X	Y
HRP1520		21	18	15	15	45	584	445	521	476	749	810	546	308	381	425
HRP1521		30	27	26	23	51	749	610	521	476	914	975	546	308	546	425
HRP1522		38	30	30	30	58	953	813	521	476	1118	1178	546	308	749	425
HRP1523		30	27	24	15	46	533	394	521	578	699	759	597	308	330	425
HRP1524		46	46	38	23	54	749	610	521	578	914	975	597	308	546	425
HRP1525		61	58	52	30	59	889	749	521	578	1054	1115	597	308	686	425
HRP1526		34	21	18	15	48	432	292	648	629	597	657	708	394	229	552
HRP1527		43	29	26	23	52	533	394	648	629	699	759	708	394	330	552
HRP1528		61	40	37	30	56	648	508	648	629	813	873	708	394	445	552
HRP1529		27	15	15	15	48	330	191	648	730	495	556	759	394	197	552
HRP1530		47	43	24	32	52	432	292	648	730	597	657	759	394	229	552

Aviation Reels to handle single 1" through 1-1/2" I.D. hose

Manual or Power Rewind reels

- Gear-driven crank rewind, or chain and sprocket drive powered by an electric, hydraulic or compressed air motor.
- Optional auxiliary crank rewind for power reels.
- Crank rewind reels supplied with pinion brake and power rewind reels with a comet brake.
- 90° ball bearing swivel joint with 2-1/2" victaulic.
- Flanged riser with 2" female BSP threads.
- Standard inlet, riser, hub assembly are aluminum for jet fuels.
- Rollers and roller mounting brackets are accessory items. Specify roller position.
- Pressures up to 41 bar.
- Temperatures from -29°C to +107°C.
- Consult factory for other pressures & temps.
- Length max. 107 meter.

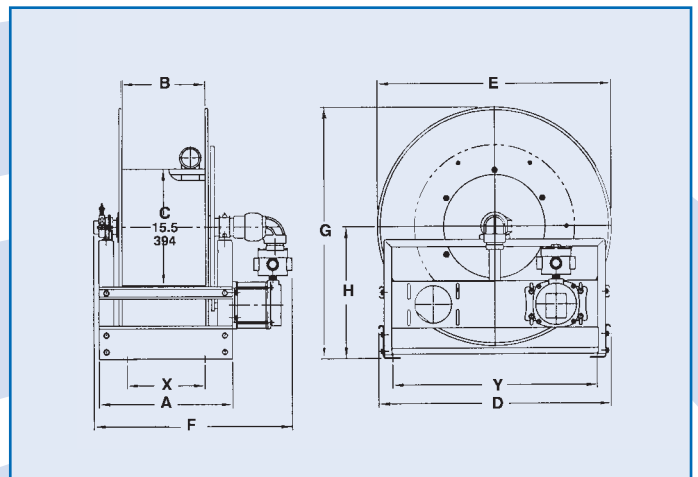
HRP 1540



Standard Configuration Shown

Notes:

1. Specifications subject to change.
2. Upon request, reels can be supplied with drum lengths other than shown and with disc sizes in other diameters.
3. When ordering power rewind models, prefix model number with:
A = Air Rewind-Supplied with control valve and hose.
EPJ = Explosion Proof Electric Rewind (1/2 HP)-Supplied with explosion proof switch, solenoid, and junction box.
HD = Hydraulic Rewind-Not supplied with control valve.
4. Accessory seperated.



HRP1540 - Aviation Reels to handle single 1-1/2" or 2" I.D. hose

Model Number	Hose Capacity of Reel(m)		Approx. Weight Crank Rewind (kg) NET	Reel Dimensions (mm) Crank Power										
	I.D. (in) O.D. (in)	1-1/2"		2"	A	B	D	E	F	F	G	H	X	Y
HRP1540		21	15	47	603	445	686	654	787	803	676	349	413	591
HRP1541-1059		30	23	66	768	610	686	654	953	969	676	349	578	591
HRP1542		43	30	89	972	813	686	654	1156	1172	676	349	781	591
HRP1543		18	15	32	400	241	800	806	584	600	848	445	210	705
HRP1544		30	23	42	502	343	800	806	686	702	848	445	311	705
HRP1545		43	30	60	667	508	800	806	851	867	848	445	476	705
HRP1546		76	46	82	603	445	1016	991	787	838	1013	518	413	940
HRP1547		107	61	99	819	660	1016	991	1003	1054	1013	518	578	940

Manual or Power Rewind reels

- Rugged, industrial-duty channel frame construction.
- Gear-driven crank rewind or chain and sprocket drive powered by an electric, hydraulic or compressed air motor.
- Pinion shaft brake as auxiliary crank rewind on power reels, at extra cost.
- Crank rewind supplied with pinion brake, power reels with comet brake.
Other brakes and locking devices may be specified.
- 90° ball bearing swivel joint with 3" victaulic groove.
- Flanged riser with 3" female BSP threads.
- Standard inlet, outlet riser and hub assembly are aluminum for jet fuels.
- Rollers and roller mounting brackets are accessory items. Specify roller position.
- Pressures up to 41 bar.
- Temperatures from -29°C to +107°C.

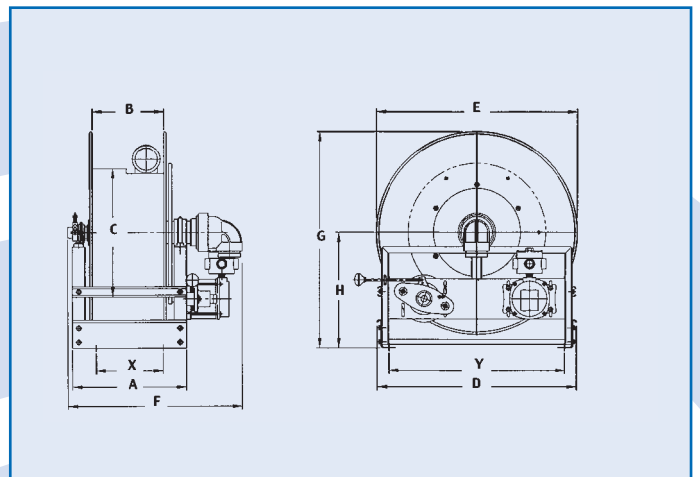
HRP 1550



Shown with Clutch-Reduction unit

Notes:

1. Specifications subject to change.
2. Upon request, reels can be supplied with drum lengths other than shown and with disc sizes in other diameters.
3. When ordering power rewind models, prefix model number with:
A = Air Rewind—Supplied with control valve and hose.
EPJ = Explosion Proof Electric Rewind (1/2 HP)—Supplied with explosion proof switch, solenoid, and junction box.
HD = Hydraulic Rewind—Not supplied with control valve.
4. Accessory seperated.



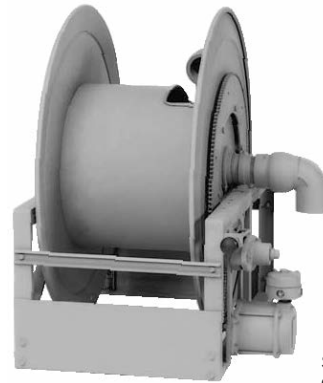
HRP1550 - Aviation Reels to handle 2" through 3" I.D. hose

Model Number	Hose Capacity of Reel(m)			Approx. Weight Crank Rewind (kg) NET	Reel Dimensions (mm) Crank Power											
	I.D. (in)	2"	2-1/2"		3"	A	B	C	D	E	F	F	G	H	X	Y
HRP1550		15	8	-	53	667	508	394	686	695	908	921	689	362	476	591
HRP1551		26	11	-	69	819	660	394	686	695	1060	1073	689	362	629	591
HRP1552		30	15	-	97	1073	914	394	686	695	1314	1327	689	362	883	591
HRP1553		21	8	8	57	603	445	508	800	806	845	857	861	457	413	705
HRP1554		43	15	15	108	972	813	508	800	806	1213	1226	861	457	781	705
HRP1555		37	20	15	91	603	445	508	1016	991	845	857	1026	530	413	940
HRP1556		56	27	24	108	768	610	508	1016	991	1010	1022	1026	530	578	940
HRP1557		61	37	30	164	667	508	508	1168	1143	908	921	1178	607	476	1092

Manual or Power Rewind reels

- Rugged, industrial-duty channel frame construction.
- Gear-driven crank rewind, or chain and sprocket drive powered by an electric, hydraulic or compressed air motor.
- Pinion shaft brake as auxiliary on power reels, at extra cost.
- Crank rewind reels supplied with pinion brake, power reels with comet brake. Other brakes and locking devices may be specified.
- 90° ball bearing swivel joint with 4" female BSP threads.
- Flanged riser with 4" female BSP threads.
- Standard outlet riser and hub assembly are steel with iron inlet swivel joint. For jet fuels can be supplied in stainless steel, at extra cost.
- Rollers and roller mounting brackets are accessory items. Specify roller position.
- Pressures up to 41 bar.
- Temperatures from -29°C to +107°C.

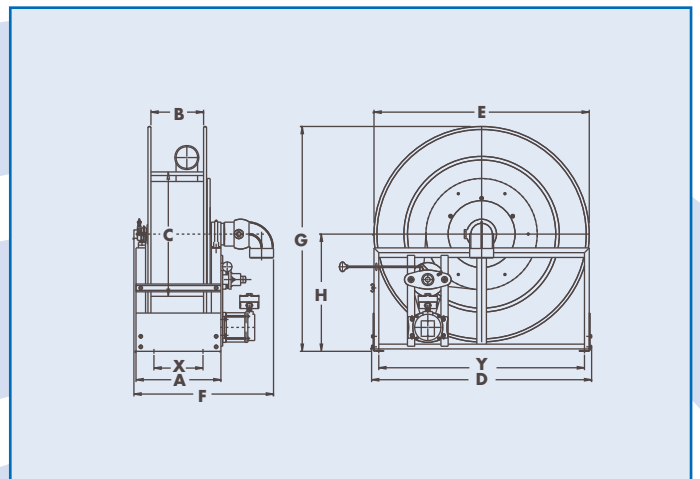
HRP 1560



Standard Configuration shown

Notes:

1. Specifications subject to change.
2. Upon request, reels can be supplied with drum lengths other than shown and with disc sizes in other diameters.
3. When ordering power rewind models, prefix model number with:
 - A = Air Rewind—Supplied with control valve and hose.
 - EPJ = Explosion Proof Electric Rewind (1/2 HP)—Supplied with explosion proof switch, solenoid, and junction box.
 - HD = Hydraulic Rewind—Not supplied with control valve.
4. Accessory seperated.



HRP1560 - Aviation Reels to handle 3" or 4" I.D. hose

Model Number	Hose Capacity of Reel(m)		Approx. Weight Crank Rewind (kg) NET	Reel Dimensions (mm)										
	I.D. (in)	3" 4"		Crank Power										
	O.D. (in)	3.78" 5"		A	B	C	D	E	F	F	G	H	X	Y
HRP1560		18 -	116	451	292	914	1346	1321	743	730	1397	737	260	1270
HRP1561		26 9	125	552	394	914	1346	1321	845	832	1397	737	362	1270
HRP1562		30 12	132	667	508	914	1346	1321	959	946	1397	737	476	1270
HRP1563		12 -	132	451	292	914	1448	1422	743	730	1473	762	260	1372
HRP1564		15 12	138	552	394	914	1448	1422	845	832	1473	762	362	1372
HRP1565		20 17	147	667	508	914	1448	1422	959	946	1473	762	476	1372

Single Wrap Power Rewind reels

- Effortless and fast rewinding, wrapping, guiding of hose.
- Chain and sprocket drive powered by electric, hydraulic, or compressed air motor.
- Auxiliary crank rewind, optional.
- 12 volt rewind, comet brake, reduction unit standard.
- Air brake optional.
- Inlet, hub assembly is aluminum and/or stainless steel for jet fuel.
- Consult factory for other pressures & temps.

Series HRP1580-1583

- 90° ball bearing swivel joint 1-1/2" female BSP threads, 2" victaulic groove, flanged riser with 1-1/2" female BSP threads.
- Pressures up to 41 bar.
- Temperatures from -40°C to +79°C.

Series HRP1584-1586

- 90° ball bearing swivel joint 2-1/2" victaulic groove, flanged riser with 2" female BSP threads.
- Pressures up to 10 bar.
- Temperatures from -29°C to +107°C.

Series HRP1587-1589

- 90° ball bearing swivel joint 3" victaulic groove, flanged riser with 3" female BSP threads.
- Pressures up to 10 bar.
- Temperatures from -29°C to +107°C.

Notes:

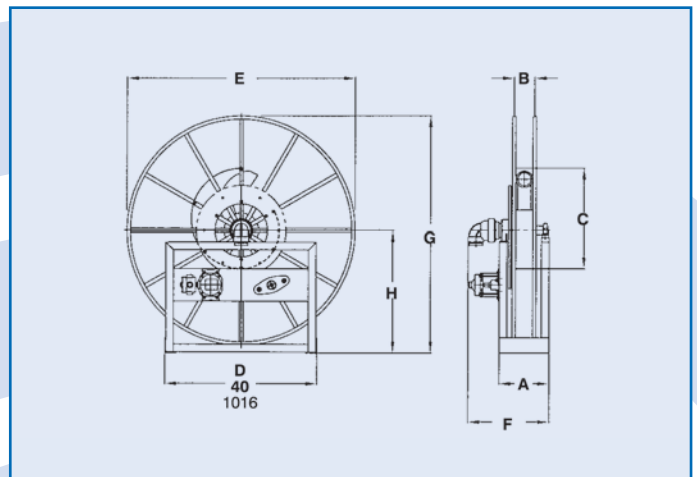
1. Specifications subject to change.
2. When ordering power rewind models, prefix model number with:
A = Air Rewind
EP = Electric Rewind (1/2 HP), 12v and 24v DC
HD = Hydraulic Rewind
3. Accessory seperated.

HRP1580



Standard model shown.
Hose not included.

Option: Victaulic Version
I-hub for HRP1587-1589 Series



HRP1580 - Aviation Reels to handle single 1-1/2" through 3" I.D. hose

Model Number	Hose Capacity of Reel(m)					Approx. Weight (kg) NET	Reel Dimensions (mm)						
	I.D. (in) O.D. (in)	1-1/2"	2"	2-1/2"	3"		A	B	C	E	F	G	H
HRP1580		15	-	-	-	141	297	70	508	1219	445	1270	660
HRP1581		23	-	-	-	150	279	70	508	1422	445	1473	762
HRP1582		30	-	-	-	154	279	70	508	1575	445	1626	838
HRP1583		40	-	-	-	159	279	70	508	1829	445	1880	965
HRP1584		-	15	-	-	168	305	95	610	1422	489	1473	762
HRP1585		-	23	-	-	177	305	95	610	1575	489	1626	838
HRP1586		-	30	-	-	181	305	95	610	1778	489	1829	940
HRP1587		-	-	15	15	182	330	121	762	1575	540	1626	838
HRP1588		-	-	23	-	186	330	121	762	1778	540	1829	940
HRP1589		-	-	30	-	191	330	121	762	1981	540	2032	1041