



Audio/Video Reels

Production & Recording Facilities • Television & Radio Stations

Live Events & Concerts • Mobile Broadcast Units • Satellite & Cable Companies

Note to the designers & engineers.

Audio/Video Reels For fast Rollout and Storage

Hose & Reel Products HRP1980-1981 series reels are specifically designed for broadcast and pro-audio applications. The reels are stackable for maximum transport and storage efficiency. Side mounted connector panels accommodate almost any combination of XLR and BNC connectors. Rugged steel construction and adjustable friction brake assure continuous smooth operation and prevent cable damage. Model HRP1981 features optional heavy-duty casters for convenient transport on-site.

Contents

Reel Type	Page
Storage Reel	
HRP1980	3
HRP1990	4
Portable Cable Storage Reels	
HRP2000	5
HRP2010	6
HRP1450	7
Removable Spool Portable Cable Reel	
HRP2020	8

Storage Reel

- Rugged steel construction throughout, including square tubing frame.
- Black, non-reflective matte finish.
- Removable side panel allows complete customization of XLR and/or BNC connector patterns. (blank panel is supplied as standard).
- Standard strain relief inside panel compartment prevents damage to cable.
- Channels allow stackability of reels for maximum storage efficiency.
- Ergonomic carrying handles allow one or two person transport.
- Adjustable friction brake to prevent cable overrun during operations.
- Optional heavy-duty, locking caster wheels (set includes 2 locking and 2 non-locking casters) available on HRP1981 reel.

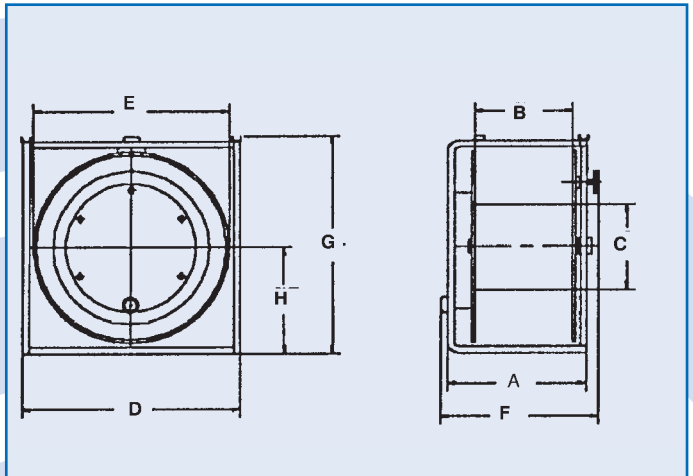
HRP1980/1981



Standard configuration shown

Notes:

1. Specifications subject to change.



HRP1980/1981 - Audio/Video Reels

Model Number	Cable Capacity of Reel(m)							Approx. Weight Without cable (kg) NET	Reel Dimensions (mm)								
	O.D. (mm)	6	10	11	12	15	17		A	B	B1	C	D	E	F	G	H
HRP1980	183	69	61	46	38	-	-	6	267	178	-	152	349	298	362	362	178
HRP1981	-	-	229	183	152	107	76	11	330	229	-	203	508	457	413	521	254

Storage Reel

- Rugged steel and aluminum construction.
- Black, non-reflective matte finish.
- Durable tray provided for storage of stage box units.
- Slotted divider disc design allows connector pigtails to be safely stored alongside snake cable.
- Ergonomic carrying handle allows one or two person transport.
- Adjustable friction brake to prevent cable overrun during operations.

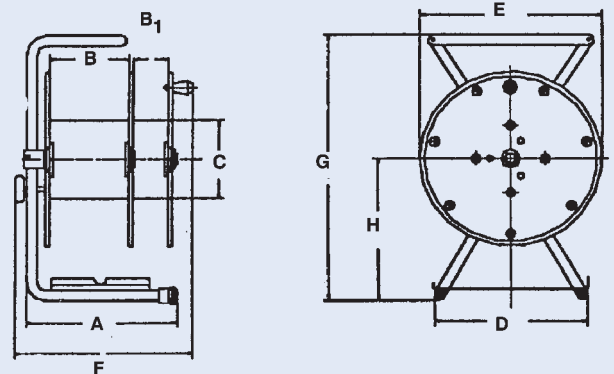
HRP1990



Standard configuration shown

Notes:

1. Specifications subject to change.



HRP1990 - Audio/Video Reels

Model Number	Cable Capacity of Reel(m)							Approx. Weight Without cable (kg) NET	Reel Dimensions (mm)								
	O.D. (mm)	6	10	11	12	15	17		A	B	B1	C	D	E	F	G	H
HRP1990	-	-	-	84	69	46	30	7	279	152	76	152	305	356	343	533	286

Portable Cable Storage Reels
For broadcast applications

- Portable cable reel is small, lightweight, and durable.
- Designed for quick and easy use, this reel is ideal for applications where long lengths of cable are payed out over large areas.
- Rewind is accomplished with a crank handle permanently attached to the disc.
- This model is equipped with our exclusive Cam-Lock drag/brake system to control spool speed.
- Also equipped with Velcro cable fastener to keep cable end secure.
- Coated in a nonreflective black matte finish.

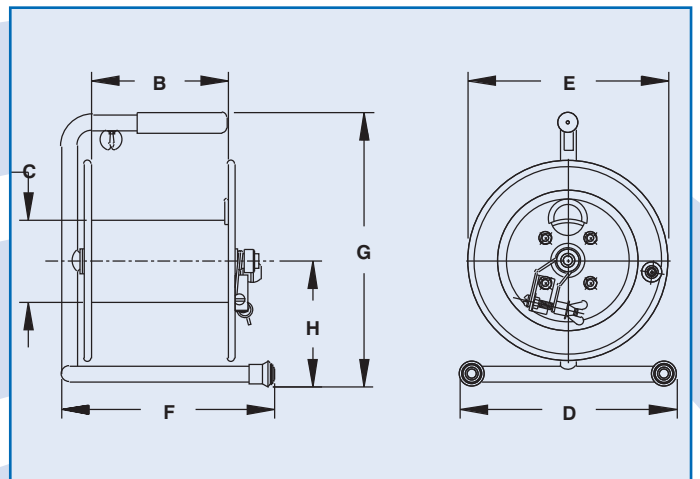
HRP2000



Standard configuration shown

Notes:

1. Specifications subject to change.



HRP2000 - Audio/Video Reels																	
Model Number	Cable Capacity of Reel(m)							Approx. Weight Without cable (kg) NET	Reel Dimensions (mm)								
	O.D. (mm)								x,y indicate mounting holes								
	6	10	10	11	12	15	17		A	B	C	D	E	F	G	H	X
HRP2000	183	69	61	46	38	-	-	5	-	191	114	302	273	298	381	175	-
HRP2001	290	107	91	76	69	58	30	8	279	191	152	394	356	324	483	219	-

Portable Cable Storage Reels
For broadcast applications

- Rugged steel and aluminum construction.
- Black, non-reflective matte finish.
- Durable tray provided for storage of stage box units.
- Slotted divider disc design allows connector pigtails to be safely stored alongside snake cable.
- Ergonomic carrying handle allows one or two person transport.
- Adjustable friction brake to prevent cable overrun during operations.

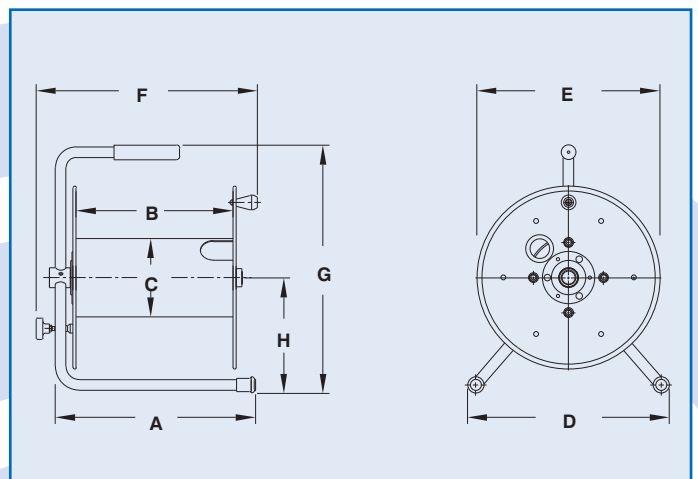
HRP2010



Standard configuration shown

Notes:

1. Specifications subject to change.



HRP2010 - Audio/Video Reels

Model Number	Cable Capacity of Reel(m)						Approx. Weight Without cable (kg) NET	Reel Dimensions (mm)									
	O.D. (mm)	6	10	11	12	15		17	A	B	C	D	E	F	G	H	X
HRP2010	-	168	122	107	91	61	38	5	381	305	125	394	356	425	483	219	-

Portable Cable Storage Reels
For broadcast applications

- Model HRP1450 offers standard direct crank rewind permanently attached to the axle.
- Standard on manual rewind models, are a spring actuated pin lock and our Cam-Lock drag/brake.
- Coated in a non-reflective black matte finish.

Other HRP1450 Options:

- Heavy Duty locking caster wheel set, includes 2 locking and 2 non-locking casters with mounting plates.
- Frame mounted carry handles.
- Divider Discs, available with a cut-out for a separate "snake" lead storage.
(Note: this disc location must be specified).



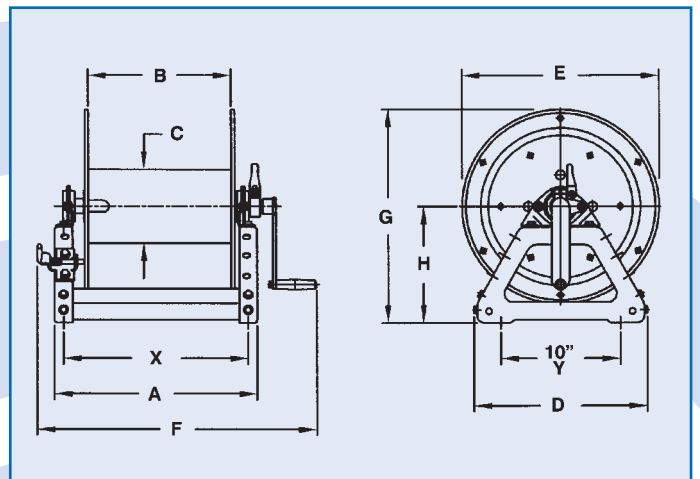
Standard configuration shown.



Shown with optional divider disc and larger disc diameters for added capacity).

Notes:

1. Specifications subject to change.



HRP1450 - Audio/Video Reels																	
Model Number	Cable Capacity of Reel(m)							Approx. Weight Without cable (kg) NET	Reel Dimensions (mm)								
	O.D. (mm)	6	10	10	11	12	15		17	A	B	C	D	E	F	G	H
HRP1450	-	213	160	130	114	76	53	10	279	152	152	368	419	406	460	251	241
HRP1451	-	-	244	213	175	130	76	11	330	203	152	368	419	457	460	251	292
HRP1452	-	-	244	213	175	130	76	11	432	305	152	368	419	559	460	251	394

Removable Spool Portable Cable Reel

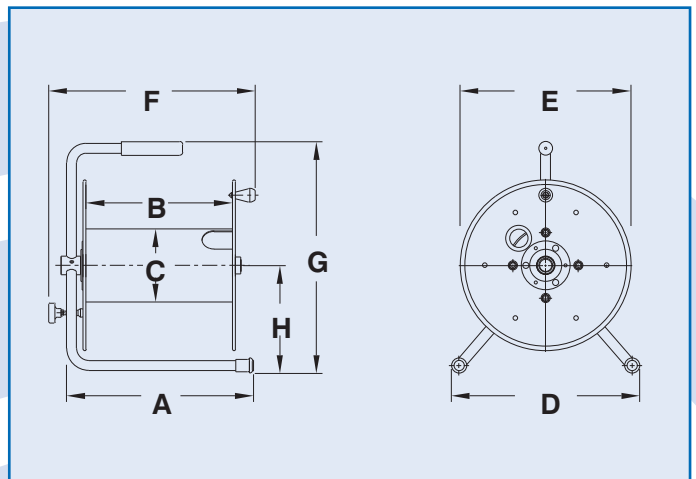
- Use Multiple Spools on One Frame
- Quick Release Spool Removal
- Self-Storing Removable Rewind Crank
- Ideal for Small Vehicles and Storage Areas.
- Extra Spools can be stored on vertical or horizontal spindles of your own design, when needed transfer spool to frame for transport to work site.
- Sturdy steel construction with direct crank rewind provides fast, easy pick-up.
- Perfect for applications with long cable runs or large diameter cable.
- Adjustable friction brake is standard.
- Coated in a non-reflective black matte finish.

HRP2020



Notes:

1. Specifications subject to change.



HRP2020 - Audio/Video Reels																
Model Number	Cable Capacity of Reel(m)							Approx. Weight (kg) NET	Reel Dimensions (mm)							
	O.D. (mm)	6	10	10	11	12	15		17	A	B	C	D	E	F	G
HRP2020	-	213	160	122	122	76	53	5	381	305	152	394	356	425	483	219