

# LP Gas Hose Reels

**Home Delivery Trucks • Dispensing Systems**

**Fueling Vehicles**

**Filling Stationary and Portable Cylinders**

**Note to the designers & engineers.**

**LP Gas reels**

The reels shown in this catalog are the standard of the industry. These models reflect various installation and performance requirements. The high quality of our standard steel construction is only the beginning.

**Hose & Reel Products** offers any size configuration to fit a defined space, and we construct many models of reels of aluminum or stainless steel. Specifically, we use 5000 and 6000 series aluminum and 304 stainless steel in the manufacture of frames, discs, drums and internals as well as other structural components. This type of construction eliminates the need for maintenance repainting and part replacement due to rust or corrosion.

Please consult **Hose & Reel Products** on any fuel handling questions. For the many accessories and components available on our standard reel models such as roller guides, switches, brakes and locks, etc. please contact the office. **Hose & Reel Products** reels are custom-built for better performance. Don't trust a "one-size-fits-all" or "adjustable" LP gas reel. Only Hose & Reel Products LPG reels are built to fit your specific application, guaranteeing a perfect fit. Our LPG reels are the only ones to provide years of trouble-free operation in home delivery trucks, dispensing systems and fueling vehicles, and for filling stationary and portable cylinders. LPG reels – available in aluminum, stainless steel, and e-coated and painted steel – give you superior protection against contamination and corrosion in sensitive or harsh environments. With minimal potential for rust, these durable reels are the wisest choice for any LP gas application.

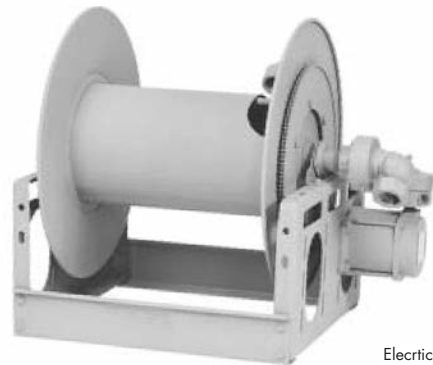
**Contents**

Reel Type	I.D. Hose Sizes	Page
<b>Manual or Power Rewind Reels</b>		
HRP1870	1" - 1-1/2"	3
<b>Manual or Power Rewind Reels with Top-Mounted Guidemaster</b>		
HRP1880	1" - 1-1/2"	4
<b>Power Rewind Liquid Reels with Manual Rewind Vapor Reel</b>		
HRP1890	1" - 1-1/2" (Liquid)	5
	1/2" - 1" (Vapor)	5
<b>Spring Rewind Reels</b>		
HRP1900	1/2" - 1"	6

## Manual or Power Rewind Reels

- Series HRP1870 are explosion-proof reels.
- New HRP1870 series reel is direct drive eliminating the use of chain and sprockets.
- Choose gear-driven crank rewind, chain and sprocket drive powered by an electric, hydraulic or compressed air motor or direct drive hydraulic rewind motor.
- Crank rewind reels and direct drive reels supplied with pinion brake.
- Power rewind reels (chain & sprocket driven) supplied with a strap brake. Other brake and locking devices may be specified.
- Standard inlet is 90° ball bearing swivel joint with 1-1/2" female BSP threads.
- Standard outlet is a flanged riser with 1" female BSP threads.  
Standard inlet, outlet riser, and hub assembly are steel.
- Rollers and roller mounting brackets are accessory items. Specify roller position.
- Pressures up to 24 bar.
- Temperatures from -40°C to +177°C.

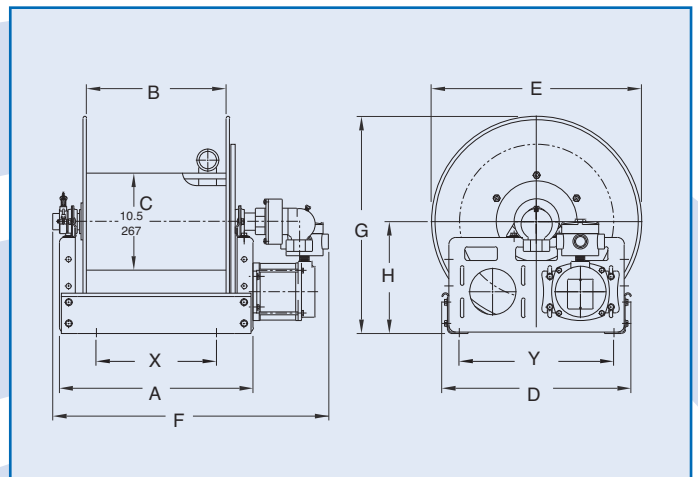
## HRP1870



Electric Rewind Shown

### Notes:

1. Specifications subject to change.
2. Upon request, reels can be supplied with drum lengths other than shown and with disc sizes in other diameters.
3. Accessory seperated.
4. When ordering power rewind models, prefix model number with:
  - A = Air Rewind – Supplied with control valve and hose.
  - E = Explosion Proof Electric Rewind (1/2 HP) – Supplied with explosion proof switch, solenoid, and junction box.
  - HD = Hydraulic Rewind – Not supplied with control valve.
  - D = Direct Drive Hydraulic Rewind – Not supplied with control valve



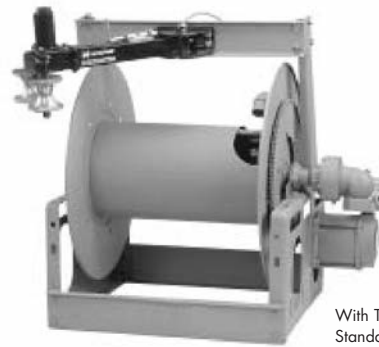
### HRP1870 - LP Gas Hose Reels to handle single 1" through 1- 1/2" I.D. hose

Model Number <small>For Power Rewind see note 4</small>	Hose Capacity of Reel(m)			Approx. Weight (kg) NET	Reel Dimensions (mm)											
	I.D. (in)	1" O.D. (in)	1 1/2" O.D. (in)		A	B	D	E	F	F	F	F	G	H	X	Y
HRP1870		38	15	46	533	394	521	578	711	743	730	730	597	308	330	425
HRP1871		69	23	52	699	559	521	578	876	908	895	895	597	308	495	425
HRP1872		76	30	54	483	343	648	730	660	692	679	679	759	394	279	552

## Manual or Power Rewind Reels with Top-Mounted Guidemaster

- Choose chain and sprocket drive powered by an electric, hydraulic or compressed air motor or direct drive hydraulic rewind motor.
- Auxiliary crank rewind standard on HRP1880 Series reels. Available on HRP1880 Series power rewind reels, at extra cost.
- Direct drive hydraulic rewind reels supplied with pinion brake.  
Electric powered rewind reels supplied with a strap brake.
- Other brake and locking devices may be specified. (See Ordering & Accessory Guide)
- Standard inlet is 90° ball bearing swivel joint with 1-1/2" female BSP threads.
- Standard outlet is a flanged riser with 1" female BSP threads.
- Standard inlet, outlet riser, hub assembly are steel.
- Pressures up to 24 bar.
- Temperatures from -40° C to +177° C.

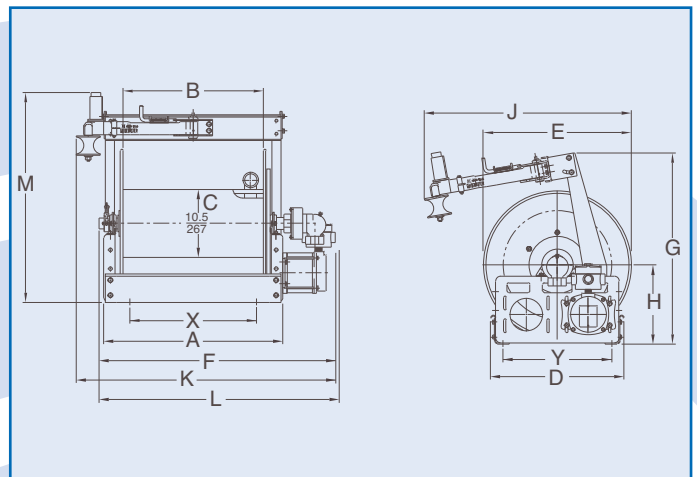
## HRP1880



With Top-Mounted Guidemaster. Standard Configuration Shown/ Electric Rewind Shown.

### Notes:

1. Specifications subject to change.
2. Upon request, reels can be supplied with drum lengths other than shown and with disc sizes in other diameters.
3. When ordering power rewind models, prefix model number with:
  - A = Air Rewind – Supplied with control valve and hose.
  - E = Explosion Proof Electric Rewind (1/2 HP) – Supplied with explosion proof switch, solenoid, and junction box.
  - HD = Hydraulic Rewind – Not supplied with control valve.
  - D = Direct Drive Hydraulic Rewind – Not supplied with control valve.
4. Dimension J is maximum, with Guidemaster in operating position. Dimension K is maximum, with Guidemaster in traveling position opposite rewind motor, as shown in dimensional drawing. Dimension L is maximum, with Guidemaster in traveling position on same side as rewind motor.
5. Accessory seperated.

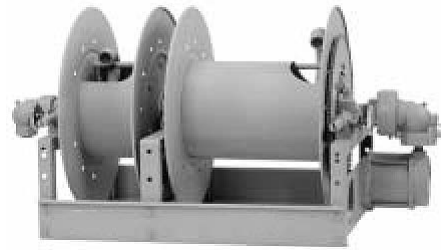


### HRP1880 - LP Gas Reels to handle single 1" or 1-1/2" I.D. hose

Model Number <i>For Power Rewind see note 3</i>	Hose Capacity of Reel(m)			Approx. Weight (kg) NET	Reel Dimensions (mm)														
	I.D. (in)	1" O.D. (in)	1 1/2" O.D. (in)		Elec.			Air		Hyd.		G	H	J	K	L	M	X	Y
HRP1880		38	15	76	533	394	521	578	743	718	718								
HRP1881		46	23	81	699	559	521	578	908	883	883	749	308	838	933	933	800	495	425
HRP1882		61	34	82	648	508	648	629	857	832	832	838	394	864	991	883	889	445	552

## Power Rewind Liquid Reels with Manual Rewind Vapor Reel

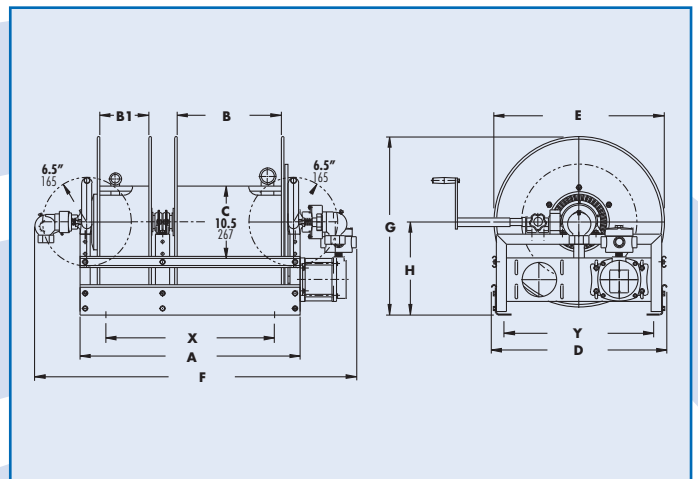
- Series HRP1890 are explosion-proof reels.
- New HRP1890 Series reel is direct drive eliminating the use of chain and sprockets.
- Choose gear-driven crank rewind, chain and sprocket drive powered by an electric, hydraulic or compressed air motor or direct drive hydraulic rewind motor.
- Crank rewind reels and direct drive reels supplied with pinion brake.
- Power rewind reels (chain & sprocket driven) supplied with a strap brake. Other brake and locking devices may be specified.
- Standard inlet is 90° ball bearing swivel joint with 1-1/2" female BSP threads.
- Standard outlet is a flanged riser with 1" female BSP threads.  
Standard inlet, outlet riser, and hub assembly are steel.
- Other sizes and/or threads can be furnished and must be specified.
- Rollers and roller mounting brackets are accessory items. Specify roller position.
- Pressures up to 24 bar.
- Temperatures from -40°C to +177°C.
- Consult factory for other pressures and temperatures.



Standard Configuration Shown.  
Electric Rewind Shown

### Notes:

1. Specifications subject to change.
2. Upon request, reels can be supplied with drum lengths other than shown and with disc sizes in other diameters.
3. Accessory seperated.
4. When ordering power rewind models, prefix model number with:  
A = Air Rewind – Supplied with control valve and hose.  
E = Explosion Proof Electric Rewind (1/2 HP) – Supplied with explosion proof switch, solenoid, and junction box.  
HD = Hydraulic Rewind – Not supplied with control valve.



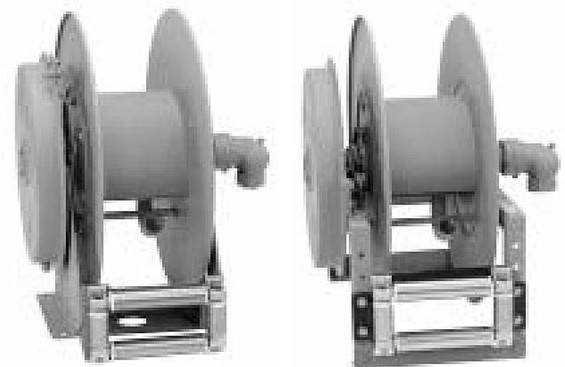
### HRP1890 - LP Gas Hose Reels to handle 1" through 1-1/2" I.D. liquid hose & 1/2" through 1" Vapor hose

Model Number <small>For Power Rewind see note 4</small>	Hose Capacity of Reel(m)					Approx. Weight (kg) NET	Reel Dimensions (mm)										
	I.D. (in)	1" 1 1/2"	1/2" 3/4"	1"			A	B	B1	D	E	F	G	H	X	Y	
	O.D. (in)	1.5" 2.16"	.94" 1.26"	1.5"													
		Liquid reel		Vapor reel													
HRP1890		38	15	53	24	23	116	813	394	191	603	584	1175	607	318	622	508
HRP1891		46	23	53	24	23	120	978	559	191	603	584	1340	607	318	787	508
HRP1892		61	30	69	30	23	121	927	508	191	648	629	1289	657	343	737	552

## Spring Rewind Reels

- Standard HRP1900 series narrow frame
- Channel frame for heavy-duty applications must be specified.
- Non sparking ratchet locks reel.
- Declutching arbor to prevent damage from reverse winding.
- Standard inlet is 90° ball bearing swivel joint with 1" female BSP threads.
- Standard outlet is 1" female BSP threads.
- Other sizes and/or threads can be furnished and must be specified.
- Pressures to 24 bar.
- Temperatures from -40°C to +177°C.
- Supplied 4-way roller assembly. Specify roller position.

## HRP1900



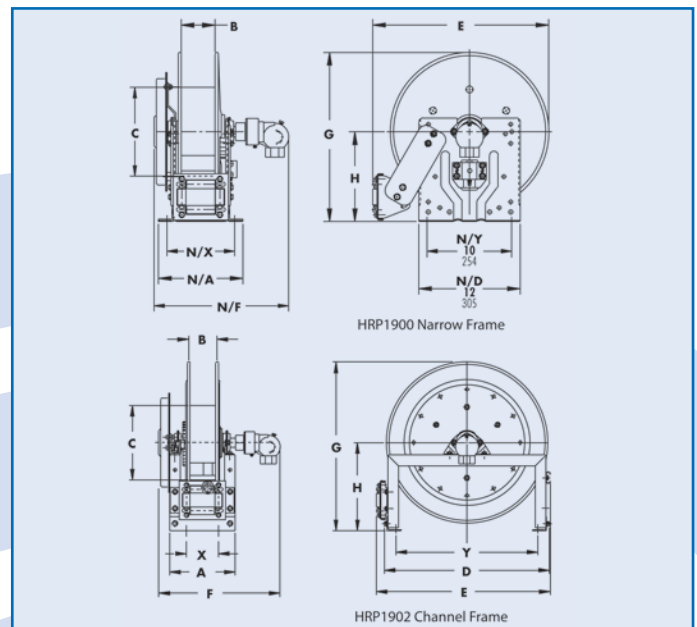
HRP1900

Standard Configuration  
Shown

HRP1902

### Notes:

1. Specifications subject to change.
2. Others sizes, from standard components, available on request.
3. Accessory seperated.



### HRP1900 - LP Gas Hose Reels to handle 1/2" to 1" I.D. hose

Model Number <small>Delete prefix N for Channel frame</small>	Hose Capacity of Reel(m)				Approx. Weight (kg) NET	Reel Dimensions (mm)															
	I.D. (in)	1/2"	3/4"	1"		A	N/A	B	C	D	E	N/E	F	N/F	G	N/G	H	N/H	N/X	X	Y
HRP1900		20	18	11	44	235	254	102	267	635	663	641	448	400	657	660	343	346	203	114	559
HRP1901		18	21	15	46	286	305	152	267	635	663	641	499	451	657	660	343	346	254	165	559
HRP1902		34	23	12	56	235	-	102	394	724	775	-	448	-	810	-	432	-	-	114	648
HRP1903		23	26	23	59	337	-	203	267	635	686	-	568	-	657	-	343	-	-	216	559
HRP1904		23	30	30	62	337	-	203	394	724	775	-	568	-	797	-	432	-	-	216	648

LP Gas Hose Reels to handle 1/2" to 1" I.D. hose