

Rescue Hose Reels

Haz-mat Situations • Vehicular Extrications
At-the-scene Emergencies • Breathing and Utility Air Applications

Note to the designers & engineers.

Rescue Reels

Hose & Reel Products Rescue Reels come to the rescue in emergency situations.

- The HRP1910 hose reel is a rugged, but lightweight reel that's ideal for utility air or breathing air when specified.
- The HRP1920 handles live electric cable and is invaluable when you need power at the scene of an emergency.
- The durable HRP1930 dual-hose reel is unsurpassed in rescue situations that require hydraulic hose for power tools such as cutters, spreaders, or jacks.

Our Standard Package can be found in the catalog; if you require a different model, other specifications, or optional accessories, please contact Hose & Reels Products and we will help you to find a proper solution.

The hose of these Rescue Reels are:

Amkus	compatible	(on request)
Holmako	compatible	(on request)
Hurs	compatible	(on request)

Hose and Cable Packages

Hose & Reel Packages provide you with the primary rescue hose and cable reels that are required on today's rescue vehicles. All three models are specified below and are available complete with hose and cable. **Hose & Reel Products** offers a broad selection of hose fittings and cable connectors to meet your requirements.

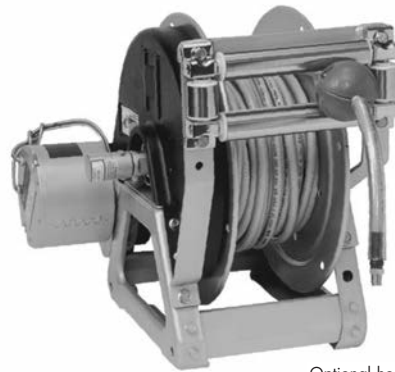
Contents

Reel Type	I.D. Hose Sizes	Page
For Utility or Breathing Air Hose		
HRP1910	1/4" - 3/8" - 1/2"	3
For on-site use		
HRP1920	electric cable	4
For all Power Rescue Tools		
HRP1930	dual hydraulic 1/4"	5
CORE™ Rescue Tools		
HRP1940	CORE™ Rescue Tools	6
Spring Rewind reels for Utility or Breathing Air Hose		
HRP1950	3/16" - 1/2"	7

For Utility or Breathing Air Hose

- Choose permanent crank rewind or chain & sprocket drive powered by an electric or compressed air motor.
- Spring actuated pinlock, adjustable cam-lock drag brake on crank rewind models.
- 90° ball bearing swivel joint, 1/2" female BSPT threads.
- Outlet 1/2" female BSPT threads.
- Other sizes/threads can be furnished and must be specified.
- Rollers and roller mounting brackets are accessory items.
Specify roller position.
- Standard finish is oven-cured enamel. Polished stainless steel discs and sprocket with chrome frame extra cost.
- HRP1910 reels pressures to 207 bar.
- HRP1910H reels pressures up to 414 bar.
- Temperatures from -7°C to +204°C.

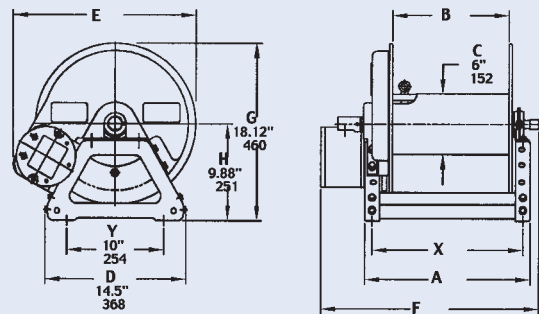
HRP1910



Optional hose package & Assembly C Roller Shown

Notes:

1. Specifications subject to change.
2. Upon request, reels can be supplied with drum lengths other than shown and with disc sizes in other diameters.
3. When ordering power rewind models, prefix model number with:
A = Air Rewind
E = Electric Rewind (12v and 24v DC)
4. Non explosion proof
5. Model Designations:
HRP 1910 = Utility Air Applications
HRP 1910L = Low-Pressure Breathing Air Applications
HRP 1910H = High-Pressure Breathing Air Cascade Systems
6. Accessory seperated.



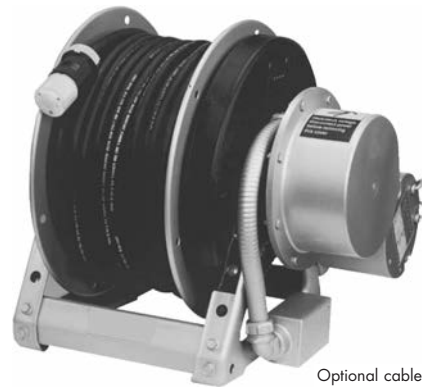
HRP1910 - Rescue Reels to handle 1/4", 3/8" and 1/2" I.D. hose

Model Number	Hose Capacity of Reel(m)			Approx. Weight (kg) NET	Reel Dimensions (mm)							
	I.D. (in) O.D. (in)	1/4" 5/8"	3/8" 3/4"		1/2" 7/8"	A	B	Crank E	Power E	Crank F	Power F	X
HRP1910		53	38	23	12	279	152	419	483	483	483	241
HRP1911		76	53	38	13	330	203	419	483	533	489	292
HRP1912		107	84	53	13	432	305	419	483	635	591	394

For on-site use

- Choose removable crank rewind or chain & sprocket drive powered by an electric or compressed air motor.
- Adjustable cam-lock brake on crank rewind models.
- 3 conductor 45 amp collector assembly w/ #8 gauge wiring.
- Consult factory for additional conductors available at extra cost.
- Rollers and roller mounting brackets are accessory items.
Specify roller position.
- Standard finish is oven-cured enamel. Polished stainless steel discs and sprocket with chrome frame at extra cost.

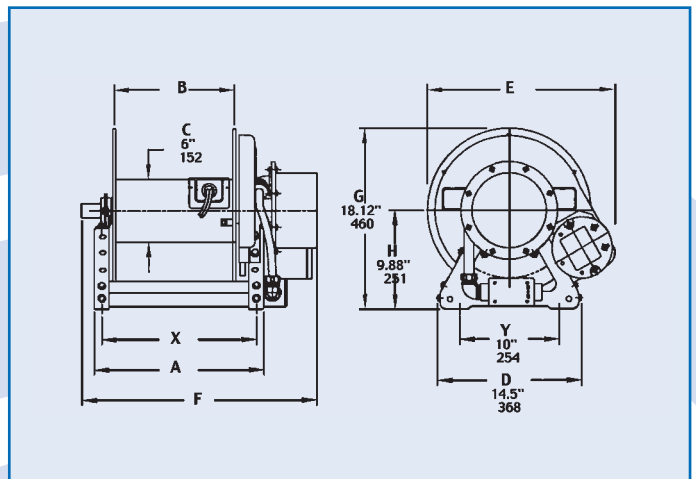
HRP 1920



Optional cable package shown

Notes:

1. Specifications subject to change.
2. Upon request, reels can be supplied with drum lengths other than shown and with disc sizes in other diameters.
3. When ordering power rewind models, prefix model number with:
A = Air Rewind
E = Electric Rewind (12v and 24v DC)
4. Non explosion proof
5. For reels with 4 cond. 45 amp collector assy's, add "2" to "F" dimension.
6. Accessory seperated.



HRP1920 - Rescue Reels to handle live electric cable

Model Number	Cable Capacity of Reel(m)					Approx. Weight (kg) NET	Reel Dimensions (mm)						
	GA./No. of Conductors						Crank A	Power B	Crank E	Power E	F	F	X
	14/3 O.D.(in)	12/3	10/3	12/4	10/4								
HRP1920	69	53	30	30	30	14	279	152	419	483	552	445	241
HRP1921	91	61	46	46	46	15	330	203	419	483	603	495	292
HRP1922	-	122	91	91	84	16	483	365	419	483	756	648	445

Rescue Reels to handle live electric cable

For all Power Rescue Tools

- Choose manual disc rewind or chain and sprocket drive powered by an electric or compressed air motor.
- Adjustable cam-lock brake on disc rewind models.
- 90° swivel joints with 1/4" female BSPT threads.
- Rescue tool manufacturer must be specified to determine threads required and to determine packing material required.
- Rollers and roller mounting brackets are accessory items.
Specify roller position.
- Pressures up to 724 bar.
- Temperatures from -29°C to +107°C.
- Standard finish is oven-cured enamel. Polished stainless steel discs and sprocket with chrome frame are recommended for phosphate ester oil.

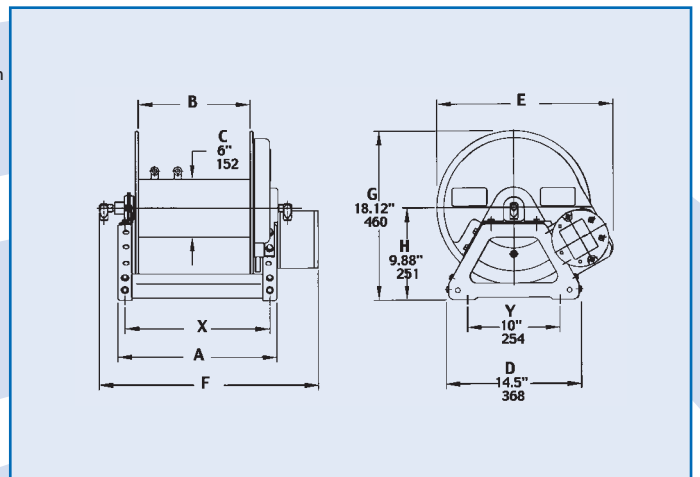
HRP 1930



Optional hose package shown

Notes:

1. Specifications subject to change.
2. Upon request, reels can be supplied with drum lengths other than shown and with disc sizes in other diameters.
3. When ordering power rewind models, prefix model number with:
A = Air Rewind
E = Electric Rewind (12v and 24v DC)
4. Non explosion proof
5. Accessory seperated.



HRP1930 - Rescue Reels to handle dual hydraulic 1/4" I.D. hose

Model Number	Hose Capacity of Reel(m)		Approx. Weight (kg) NET	Reel Dimensions (mm)						
	I.D. (in)	1/4" O.D. (in)		Disc E	Power E	Disc F	Power F	X		
HRP1930		2/23	14	279	152	419	483	394	470	241
HRP1931		2/31	15	330	203	419	483	445	512	292
HRP1932		2/61	15	432	305	419	483	546	622	394

For CORE™ Rescue Tools
To handle hydraulic Holmatro CORE Technology™ coaxial twin hose.

- Lighter weight hose and single fitting connection when compared with traditional rescue tool hose.
- Chain and sprocket drive powered by an electric motor.
- Adjustable spring drag brake standard on all models.
- CORE Technology™ swivel joint inlet and fluid path.
- Optional factory-installed 4-way roller guide available.
- Pressures to 724 bar.
- Temperatures from -34°C to +107°C.
- Divider disc separates hose from adapter block outlet.
- Standard finish is oven-cured enamel. Polished stainless steel discs & sprocket with chrome frame available.

HRP 1940



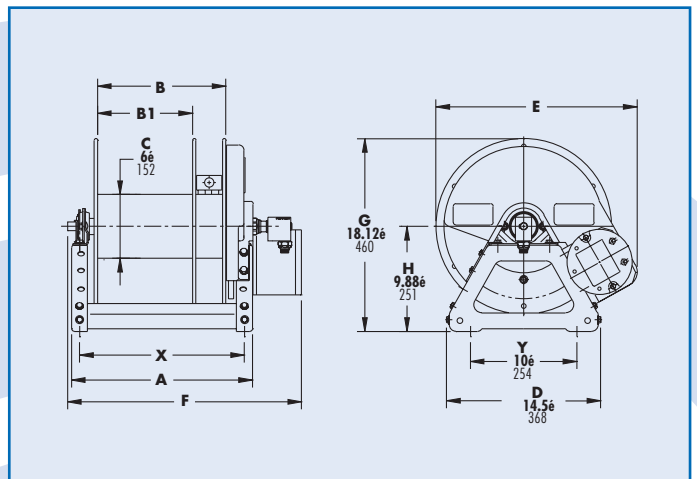
Left Top Shown



Optional Roller Assembly C2

Notes:

1. Specifications subject to change.
2. Electric rewind models available in either 12v or 24v DC. Reels supplied with switch and solenoid.
3. Add 2-1/2" to 'E' dimension and 1/2" to 'G' dimension with Assembly "C2" Roller installed in top wind position.
4. **Be sure to check all dimensions and weights prior to ordering. Must specify right or left-hand configurations.**



HRP1940 - Rescue Reels for CORE™ Rescue Tools

Model Number	Hose Capacity of Reel(m)		Approx. Weight (kg) NET	Reel Dimensions (mm)					
	O.D. (mm)	22		A	B	B1	E	F	X
HRP1940	31		40	432	305	229	483	550	394

Spring Rewind reels for Utility or Breathing Air Hose

HRP 1950

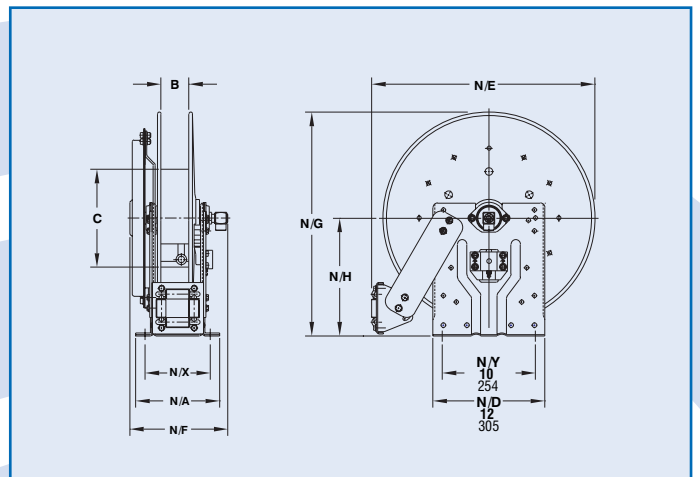
- Heavy-duty spring motor.
- Non sparking ratchet assembly.
- Declutching arbor.
- 90° full flow swivel joint with 1/2" female BSPT threads.
- Outlet is 1/2" female BSPT threads.
- Consult factory for other sizes and/or threads.
- HRP1950L reels pressures to 207 bar.
- HRP1950 reels pressures up to 414 bar.
- Temperatures from -7° C to +204° C.
- Supplied with a 4-way roller assembly.
Roller position must be specified.
- Hose stop should be used.



Standard Configuration shown

Notes:

1. Specifications subject to change.
2. Reel models and capacities shown are for standard drag applications; for vertical lift or constant tension applications consult factory.
3. Other sizes, from standard components, available on request.
4. Model Designations
HRP1950 = Utility Air Applications.
HRP1950L = Low Pressure Breathing Air applications.
HRP1950H = High Pressure Breathing Air Systems (6000 psi).
 For example: **HRP1950H 716-14-16C** - is a high pressure breathing air reel.
5. Accessory seperated.



HRP1950 - Rescue Reels to handle 3/16" through I.D. 1/2" hose

Model Number	Hose Capacity of Reel(m)				Approx. Weight (kg) NET	Reel Dimensions (mm)								
	I.D. (in)	3/16"	1/4"	3/8"		1/2"	N/A	B	C	N/E	N/F	N/G	N/H	N/X
HRP1950		9	11	11	9	25	254	102	267	470	330	432	232	203
HRP1951		11	15	15	15	29	254	102	267	527	330	508	270	203
HRP1952		30	30	30	20	43	254	102	394	603	330	610	321	203

Rescue Reels to handle 3/16" through 1/2" I.D. hose